



SZABO SCANDIC

Part of Europa Biosite

Produktinformation



Forschungsprodukte & Biochemikalien



Zellkultur & Verbrauchsmaterial



Diagnostik & molekulare Diagnostik



Laborgeräte & Service

Weitere Information auf den folgenden Seiten!
See the following pages for more information!



Lieferung & Zahlungsart

siehe unsere [Liefer- und Versandbedingungen](#)

Zuschläge

- Mindermengenzuschlag
- Trockeneiszuschlag
- Gefahrgutzuschlag
- Expressversand

SZABO-SCANDIC HandelsgmbH

Quellenstraße 110, A-1100 Wien

T. +43(0)1 489 3961-0

F. +43(0)1 489 3961-7

mail@szabo-scandic.com

www.szabo-scandic.com

[linkedin.com/company/szaboscandic](https://www.linkedin.com/company/szaboscandic) 

Laminin 511 antibody [12D]

Cat No. GTX17688

Host	Mouse
Clonality	Monoclonal
Isotype	IgG2b
Application	WB, IHC-Fr, IP, ELISA, Purification
Reactivity	Human

Package
100 µl

PRODUCT

Summary

Laminins, which consist of three subunits called alpha, beta and gamma chains, are major cell-adhesive components of extracellular matrix, especially basement membranes (BMs). The laminin family is constituted of over 15 isoforms, and each member is expressed in a tissue-specific manner and plays a differential role in each tissue. Laminin-511 (Lm511) (formerly laminin-10), which consists of alpha 5, beta 1 and gamma 1 chains, appears at an early stage of development and is most widely expressed in adult tissues, mainly basement membranes of various epithelial tissues and vasculatures. Recently, laminin-511 is often used as a culture substrate for ES and iPS cells. This antibody specifically interacts with the trimeric structure of laminin-511 isoform but does not react with any of the alpha 5, beta 1 and gamma 1 chains in the reducing conditions. Furthermore, it has been validated that clone 12D does not react with any of laminins-111, -211, -332, -3B32, -411 and -521. Unlike conventional anti- alpha 5 antibodies, clone 12D distinguishes laminin-511 from laminin-521. This is an important tool to evaluate specific distribution and physiological functions of laminin-511. In human cancers, clone 12D detects small vascular vessels with high sensitivity and hence useful for evaluating tumor angiogenesis.

APPLICATION

Application Note

*Optimal dilutions/concentrations should be determined by the researcher.

Suggested dilution	Dilution
WB	1:1000
IHC-Fr	Assay dependent
IP	Assay dependent
ELISA	Assay dependent
Purification	Assay dependent

Not tested in other applications.

Specificity/Sensitivity

This antibody specifically interacts with the trimeric structure of laminin-511 isoform but does not react with any of the alpha 5, beta 1 and gamma 1 chains in the reducing conditions. Furthermore, it has been validated that clone 12D does not react with any of laminins-111, -211, -332, -3B32, -411 and -521. Unlike conventional anti- alpha 5 antibodies, clone 12D distinguishes laminin-511 from laminin-521.

PROPERTIES

Form	Liquid
Buffer	Ascites without any additives.

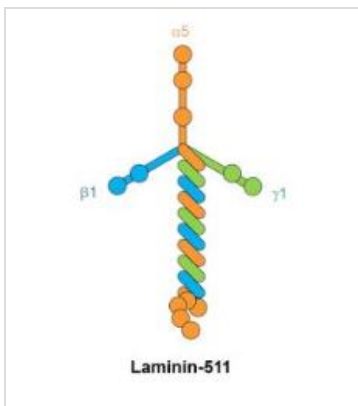


For full product information, images and publications, please visit our [website](#).

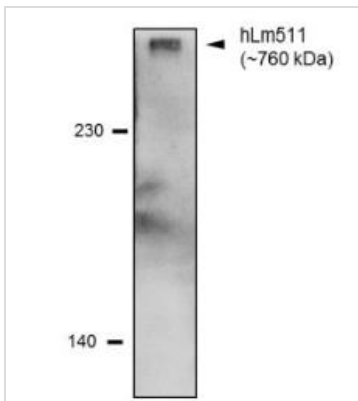
Date 2020 / 04 / 14 Page 1 of 2

Storage	Store as concentrated solution. Centrifuge briefly prior to opening vial. For short-term storage (1-2 weeks), store at 4°C. For long-term storage, aliquot and store at -20°C or below. Avoid multiple freeze-thaw cycles.
Immunogen	Human placental laminin.
Purification	Unpurified
Conjugation	Unconjugated
Note	For laboratory use only. Not for any clinical, therapeutic, or diagnostic use in humans or animals. Not for animal or human consumption.

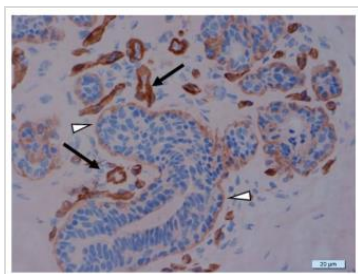
DATA IMAGES

**GTX17688 Image**

Protein structure of laminin-511

**GTX17688 WB Image**

WB analysis of recombinant human intact laminin-511 (Lm511, containing consisting of alpha5, beta 1 and gamma 1 chains) protein under non-reducing conditions using GTX17688 Laminin 511 antibody [12D].
Dilution : 1:1000

**GTX17688 IHC-Fr Image**

IHC-Fr analysis of normal mammary gland using GTX17688 Laminin 511 antibody [12D].
Black arrows : Vascular basement membrane
White arrowheads : Mammary gland basement membrane



For full product information, images and publications, please visit our [website](#).