



# SZABO SCANDIC

Part of Europa Biosite

## Produktinformation



Forschungsprodukte & Biochemikalien



Zellkultur & Verbrauchsmaterial



Diagnostik & molekulare Diagnostik



Laborgeräte & Service

Weitere Information auf den folgenden Seiten!  
See the following pages for more information!



### Lieferung & Zahlungsart

siehe unsere [Liefer- und Versandbedingungen](#)

### Zuschläge

- Mindermengenzuschlag
- Trockeneiszuschlag
- Gefahrgutzuschlag
- Expressversand

### SZABO-SCANDIC HandelsgmbH

Quellenstraße 110, A-1100 Wien

T. +43(0)1 489 3961-0

F. +43(0)1 489 3961-7

[mail@szabo-scandic.com](mailto:mail@szabo-scandic.com)

[www.szabo-scandic.com](http://www.szabo-scandic.com)

[linkedin.com/company/szaboscandic](https://www.linkedin.com/company/szaboscandic) 

## Protocadherin gamma (pan) antibody [S159-5]

**Cat No. GTX17690**

<b>Host</b>	Mouse
<b>Clonality</b>	Monoclonal
<b>Isotype</b>	IgG1
<b>Application</b>	WB, ICC/IF, IHC
<b>Reactivity</b>	Human, Mouse, Rat

**Package**  
100 µg

## APPLICATION

**Application Note**

\*Optimal dilutions/concentrations should be determined by the researcher.

Suggested dilution	Dilution
WB	1:1000
ICC/IF	1:100
IHC	Assay dependent

Not tested in other applications.

**Specificity/Sensitivity** This antibody detects ~100kDa. Cross-reacts with all Gamma-protocadherin-A, -B and -C proteins.

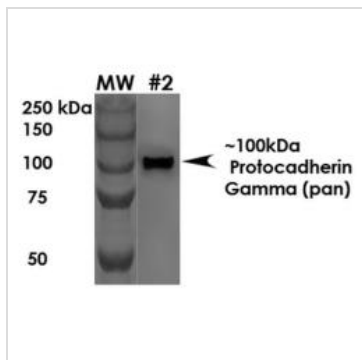
## PROPERTIES

<b>Form</b>	Liquid
<b>Buffer</b>	PBS pH 7.4, 50% glycerol, 0.1% sodium azide
<b>Storage</b>	Store as concentrated solution. Centrifuge briefly prior to opening vial. For short-term storage (1-2 weeks), store at 4°C. For long-term storage, aliquot and store at -20°C or below. Avoid multiple freeze-thaw cycles.
<b>Concentration</b>	1 mg/ml (Please refer to the vial label for the specific concentration.)
<b>Immunogen</b>	Fusion protein corresponding to amino acids 808-931 (C-terminal cytoplasmic constant domain) of mouse Protocadherin-gamma-A1 that is shared by all 22 Gamma-protocadherins (A subfamily amino acids ~807-930, B subfamily amino acids ~789-912 and C subfamily amino acids ~818-941).
<b>Purification</b>	Protein G Purified
<b>Conjugation</b>	Unconjugated
<b>Note</b>	For In vitro laboratory use only. Not for any clinical, therapeutic, or diagnostic use in humans or animals. Not for animal or human consumption.



For full product information, images and publications, please visit our [website](#).

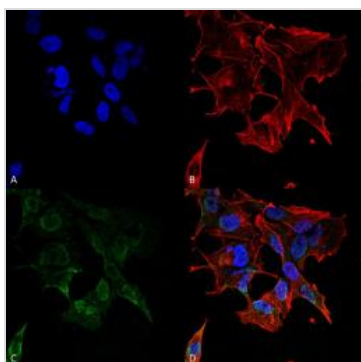
## DATA IMAGES

**GTX17690 WB Image**

WB analysis of rat brain membrane lysate using GTX17690 Protocadherin gamma (pan) antibody.

Loading : 10  $\mu$ g

Dilution : 1:1000

**GTX17690 ICC/IF Image**

ICC/IF analysis of SK-N-BE Cells using GTX17690 Protocadherin gamma (pan) antibody.

Green : Primary antibody

Red : F-Actin stain

Blue : DAPI

Fixation : 4% Formaldehyde for 15 min at RT

Dilution : 1:100



For full product information, images and publications, please visit our [website](#).