



# SZABO SCANDIC

Part of Europa Biosite

## Produktinformation



Forschungsprodukte & Biochemikalien



Zellkultur & Verbrauchsmaterial



Diagnostik & molekulare Diagnostik



Laborgeräte & Service

Weitere Information auf den folgenden Seiten!  
See the following pages for more information!



### Lieferung & Zahlungsart

siehe unsere [Liefer- und Versandbedingungen](#)

### Zuschläge

- Mindermengenzuschlag
- Trockeneiszuschlag
- Gefahrgutzuschlag
- Expressversand

### SZABO-SCANDIC HandelsgmbH

Quellenstraße 110, A-1100 Wien

T. +43(0)1 489 3961-0

F. +43(0)1 489 3961-7

[mail@szabo-scandic.com](mailto:mail@szabo-scandic.com)

[www.szabo-scandic.com](http://www.szabo-scandic.com)

[linkedin.com/company/szaboscandic](https://www.linkedin.com/company/szaboscandic) 

## beta Catenin antibody [CTNNB1/2030R]

**Cat No. GTX17706**

<b>Host</b>	Rabbit
<b>Clonality</b>	Monoclonal
<b>Isotype</b>	IgG
<b>Application</b>	ICC/IF, IHC-P, FACS, Protein Array
<b>Reactivity</b>	Human

**Package**  
100 µg

## APPLICATION

**Application Note**

\*Optimal dilutions/concentrations should be determined by the researcher.

Suggested dilution	Dilution
ICC/IF	1-2µg/ml
IHC-P	1-2µg/ml for 30 minutes at RT
FACS	1-2µg/10 <sup>6</sup> cells
Protein Array	Assay dependent

**Note : Staining of formalin-fixed tissues requires heating tissue sections in 10mM Tris with 1mM EDTA, pH 9.0, for 45 min at 95°C followed by cooling at RT for 20 minutes.**

Not tested in other applications.

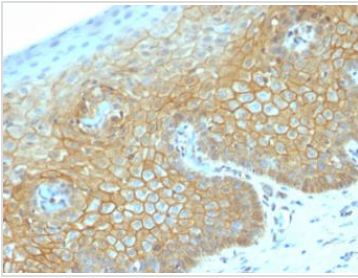
**Calculated MW** 86 kDa. ([Note](#))

## PROPERTIES

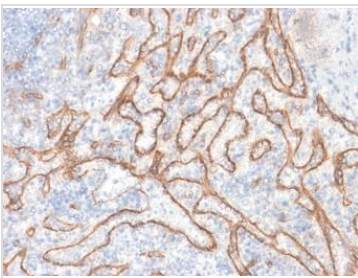
<b>Form</b>	Liquid
<b>Buffer</b>	10mM PBS, 0.05% BSA, 0.05% sodium azide (Please contact us for PBS only format)
<b>Storage</b>	Store as concentrated solution. Centrifuge briefly prior to opening vial. For short-term storage (1-2 weeks), store at 4°C. For long-term storage, aliquot and store at -20°C or below. Avoid multiple freeze-thaw cycles.
<b>Concentration</b>	0.2 mg/ml
<b>Immunogen</b>	Recombinant full-length human β-catenin protein
<b>Purification</b>	Protein A purified
<b>Conjugation</b>	Unconjugated
<b>Note</b>	For laboratory use only. Not for any clinical, therapeutic, or diagnostic use in humans or animals. Not for animal or human consumption.



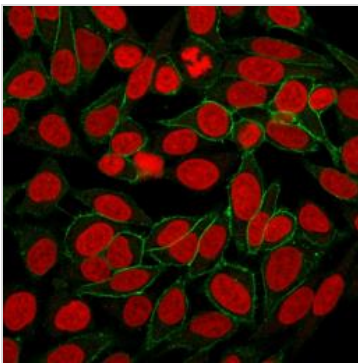
For full product information, images and publications, please visit our [website](#).

**DATA IMAGES**

**GTX17706 IHC-P Image**

IHC-P analysis of human cervical carcinoma tissue using GTX17706 beta Catenin antibody [CTNNB1/2030R].


**GTX17706 IHC-P Image**

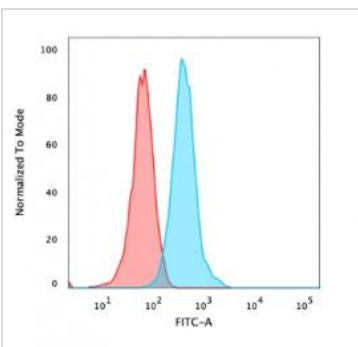
IHC-P analysis of human tonsil tissue using GTX17706 beta Catenin antibody [CTNNB1/2030R].


**GTX17706 ICC/IF Image**

ICC/IF analysis of HeLa cells using GTX17706 beta Catenin antibody [CTNNB1/2030R].

Green : Primary antibody

Red : nucleus


**GTX17706 FACS Image**

FACS analysis of HeLa cells using GTX17706 beta Catenin antibody [CTNNB1/2030R].

Blue : Primary antibody

Red : Isotype control



For full product information, images and publications, please visit our [website](#).