



# SZABO SCANDIC

Part of Europa Biosite

## Produktinformation



Forschungsprodukte & Biochemikalien



Zellkultur & Verbrauchsmaterial



Diagnostik & molekulare Diagnostik



Laborgeräte & Service

Weitere Information auf den folgenden Seiten!  
See the following pages for more information!



### Lieferung & Zahlungsart

siehe unsere [Liefer- und Versandbedingungen](#)

### Zuschläge

- Mindermengenzuschlag
- Trockeneiszuschlag
- Gefahrgutzuschlag
- Expressversand

### SZABO-SCANDIC HandelsgmbH

Quellenstraße 110, A-1100 Wien

T. +43(0)1 489 3961-0

F. +43(0)1 489 3961-7

[mail@szabo-scandic.com](mailto:mail@szabo-scandic.com)

[www.szabo-scandic.com](http://www.szabo-scandic.com)

[linkedin.com/company/szaboscandic](https://www.linkedin.com/company/szaboscandic) 

## beta Catenin antibody [rCTNNB1/2173]

## Cat No. GTX17731

<b>Host</b>	Mouse
<b>Clonality</b>	Monoclonal
<b>Isotype</b>	IgG1
<b>Application</b>	WB, ICC/IF, IHC-P, Protein Array
<b>Reactivity</b>	Human, Mouse, Rat

Package  
100 µg

## APPLICATION

## Application Note

\*Optimal dilutions/concentrations should be determined by the researcher.

Suggested dilution	Dilution
WB	1-2µg/ml
ICC/IF	1-2µg/ml
IHC-P	1-2µg/ml for 30 minutes at RT
Protein Array	Assay dependent

**Note : Staining of formalin-fixed tissues requires heating tissue sections in 10mM Tris with 1mM EDTA, pH 9.0, for 45 min at 95°C followed by cooling at RT for 20 minutes.**

Not tested in other applications.

**Calculated MW** 86 kDa. ( [Note](#) )

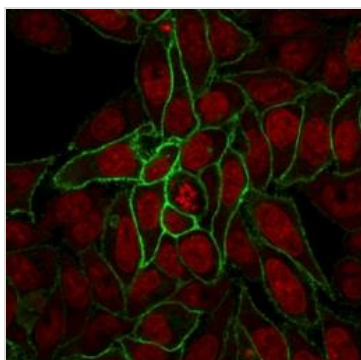
## PROPERTIES

<b>Form</b>	Liquid
<b>Buffer</b>	10mM PBS, 0.05% BSA, 0.05% sodium azide (Please contact us for PBS only format)
<b>Storage</b>	Store as concentrated solution. Centrifuge briefly prior to opening vial. For short-term storage (1-2 weeks), store at 4°C. For long-term storage, aliquot and store at -20°C or below. Avoid multiple freeze-thaw cycles.
<b>Concentration</b>	0.2 mg/ml
<b>Immunogen</b>	Recombinant full-length human $\beta$ -catenin protein
<b>Purification</b>	Protein A/G purified
<b>Conjugation</b>	Unconjugated
<b>Note</b>	For laboratory use only. Not for any clinical, therapeutic, or diagnostic use in humans or animals. Not for animal or human consumption.



For full product information, images and publications, please visit our [website](#).

DATA IMAGES

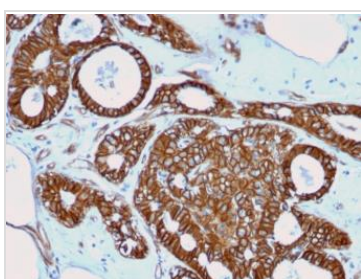


**GTX17731 ICC/IF Image**

ICC/IF analysis of HeLa cells using GTX17731 beta Catenin antibody [rCTNNB1/2173].

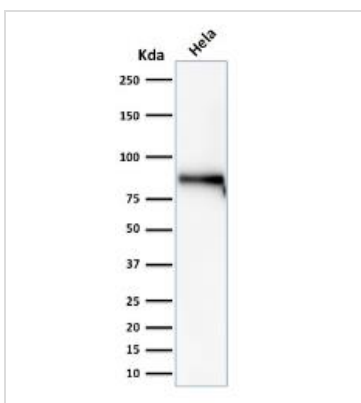
Green : Primary antibody

Red : nucleus



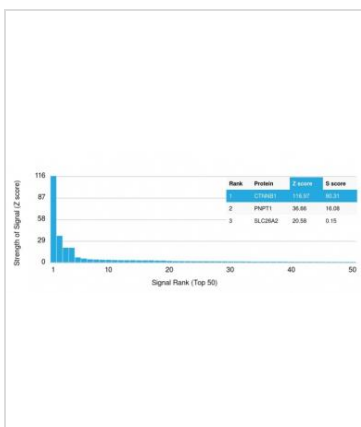
**GTX17731 IHC-P Image**

IHC-P analysis of human breast cancer tissue using GTX17731 beta Catenin antibody [rCTNNB1/2173].



**GTX17731 WB Image**

WB analysis of HeLa cell lysate using GTX17731 beta Catenin antibody [rCTNNB1/2173].



**GTX17731 Protein Array Image**

Analysis of Protein Array containing more than 19,000 full-length human proteins using Beta-Catenin Mouse Recombinant Monoclonal Antibody (rCTNNB1/2173). Z- and S- Score: The Z-score represents the strength of a signal that a monoclonal antibody produces when binding to a particular protein on the HuProt™ array. Z-scores are described in units of standard deviations (SD's) above the mean value of all signals generated on that array. If targets on HuProt™ are arranged in descending order of the Z-score, the S-score is the difference (also in units of SD's) between the Z-score. S-score therefore represents the relative target specificity of a Monoclonal Antibody to its intended target. A Monoclonal Antibody is considered to be specific to its intended target if the Monoclonal Antibody has an S-score of at least 2.5. For example, if a Monoclonal Antibody binds to protein X with a Z-score of 43 and to protein Y with a Z-score of 14, then the S-score for the binding of that Monoclonal Antibody to protein X is equal to 29.



For full product information, images and publications, please visit our [website](#).