



SZABO SCANDIC

Part of Europa Biosite

Produktinformation



Forschungsprodukte & Biochemikalien



Zellkultur & Verbrauchsmaterial



Diagnostik & molekulare Diagnostik



Laborgeräte & Service

Weitere Information auf den folgenden Seiten!
See the following pages for more information!



Lieferung & Zahlungsart

siehe unsere [Liefer- und Versandbedingungen](#)

Zuschläge

- Mindermengenzuschlag
- Trockeneiszuschlag
- Gefahrgutzuschlag
- Expressversand

SZABO-SCANDIC HandelsgmbH

Quellenstraße 110, A-1100 Wien

T. +43(0)1 489 3961-0

F. +43(0)1 489 3961-7

mail@szabo-scandic.com

www.szabo-scandic.com

[linkedin.com/company/szaboscandic](https://www.linkedin.com/company/szaboscandic) 

Melanoma gp100 antibody [PMEL/2038]

Cat No. GTX17773

| | |
|--------------------|-----------------------------|
| Host | Mouse |
| Clonality | Monoclonal |
| Isotype | IgG1 |
| Application | IHC-P, ELISA, Protein Array |
| Reactivity | Human |

Package
100 µg

APPLICATION

Application Note

*Optimal dilutions/concentrations should be determined by the researcher.

| Suggested dilution | Dilution |
|--------------------|-------------------------------|
| IHC-P | 1-2µg/ml for 30 minutes at RT |
| ELISA | 2-4µg/ml (for coating) |
| Protein Array | Assay dependent |

Note : Staining of formalin-fixed tissues requires heating tissue sections in 10mM Tris with 1mM EDTA, pH 9.0, for 45 min at 95°C followed by cooling at RT for 20 minutes.

For ELISA coating, recommend using BSA-free format (please contact us for PBS only format).

Not tested in other applications.

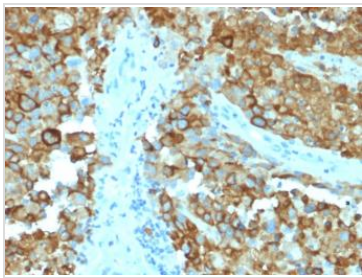
Calculated MW 70 kDa. ([Note](#))

PROPERTIES

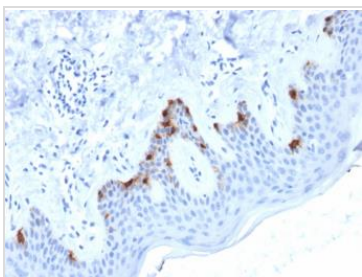
| | |
|----------------------|--|
| Form | Liquid |
| Buffer | 10mM PBS, 0.05% BSA, 0.05% sodium azide (Please contact us for PBS only format) |
| Storage | Store as concentrated solution. Centrifuge briefly prior to opening vial. For short-term storage (1-2 weeks), store at 4°C. For long-term storage, aliquot and store at -20°C or below. Avoid multiple freeze-thaw cycles. |
| Concentration | 0.2 mg/ml |
| Immunogen | A recombinant fragment (around aa 376-502) of human SILV protein (exact sequence is proprietary) |
| Purification | Protein A/G purified |
| Conjugation | Unconjugated |
| Note | For laboratory use only. Not for any clinical, therapeutic, or diagnostic use in humans or animals. Not for animal or human consumption. |



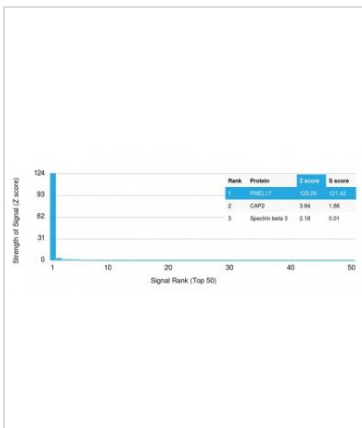
For full product information, images and publications, please visit our [website](#).

DATA IMAGES

GTX17773 IHC-P Image

IHC-P analysis of human melanoma tissue using GTX17773 Melanoma gp100 antibody [PMEL/2038].


GTX17773 IHC-P Image

IHC-P analysis of human skin tissue using GTX17773 Melanoma gp100 antibody [PMEL/2038].


GTX17773 Protein Array Image

Analysis of Protein Array containing more than 19,000 full-length human proteins using gp100 Mouse Monoclonal Antibody (PMEL/2038). Z- and S- Score: The Z-score represents the strength of a signal that a monoclonal antibody produces when binding to a particular protein on the HuProt™ array. Z-scores are described in units of standard deviations (SD's) above the mean value of all signals generated on that array. If targets on HuProt™ are arranged in descending order of the Z-score, the S-score is the difference (also in units of SD's) between the Z-score. S-score therefore represents the relative target specificity of a Monoclonal Antibody to its intended target. A Monoclonal Antibody is considered to specific to its intended target if the Monoclonal Antibody has an S-score of at least 2.5. For example, if a Monoclonal Antibody binds to protein X with a Z-score of 43 and to protein Y with a Z-score of 14, then the S-score for the binding of that Monoclonal Antibody to protein X is equal to 29.



For full product information, images and publications, please visit our [website](#).