



SZABO SCANDIC

Part of Europa Biosite

Produktinformation



Forschungsprodukte & Biochemikalien



Zellkultur & Verbrauchsmaterial



Diagnostik & molekulare Diagnostik



Laborgeräte & Service

Weitere Information auf den folgenden Seiten!
See the following pages for more information!



Lieferung & Zahlungsart

siehe unsere [Liefer- und Versandbedingungen](#)

Zuschläge

- Mindermengenzuschlag
- Trockeneiszuschlag
- Gefahrgutzuschlag
- Expressversand

SZABO-SCANDIC HandelsgmbH

Quellenstraße 110, A-1100 Wien

T. +43(0)1 489 3961-0

F. +43(0)1 489 3961-7

mail@szabo-scandic.com

www.szabo-scandic.com

[linkedin.com/company/szaboscandic](https://www.linkedin.com/company/szaboscandic) 

Melanoma gp100 antibody [PMEL/2039]

Cat No. GTX17783

Host	Mouse
Clonality	Monoclonal
Isotype	IgG1
Application	IHC-P, ELISA, Protein Array
Reactivity	Human

Package
100 µg

APPLICATION

Application Note

*Optimal dilutions/concentrations should be determined by the researcher.

Suggested dilution	Dilution
IHC-P	1-2µg/ml for 30 minutes at RT
ELISA	2-4µg/ml (for coating)
Protein Array	Assay dependent

Note : Staining of formalin-fixed tissues requires heating tissue sections in 10mM Tris with 1mM EDTA, pH 9.0, for 45 min at 95°C followed by cooling at RT for 20 minutes.

For ELISA coating, recommend using BSA-free format (please contact us for PBS only format).

Not tested in other applications.

Calculated MW 70 kDa. ([Note](#))

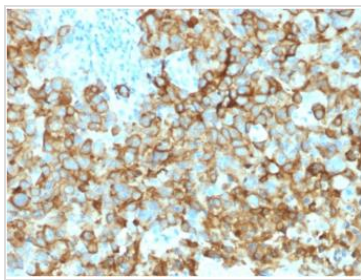
PROPERTIES

Form	Liquid
Buffer	10mM PBS, 0.05% BSA, 0.05% sodium azide (Please contact us for PBS only format)
Storage	Store as concentrated solution. Centrifuge briefly prior to opening vial. For short-term storage (1-2 weeks), store at 4°C. For long-term storage, aliquot and store at -20°C or below. Avoid multiple freeze-thaw cycles.
Concentration	0.2 mg/ml
Immunogen	A recombinant fragment (around aa 376-502) of human SILV protein (exact sequence is proprietary)
Purification	Protein A/G purified
Conjugation	Unconjugated
Note	For laboratory use only. Not for any clinical, therapeutic, or diagnostic use in humans or animals. Not for animal or human consumption.



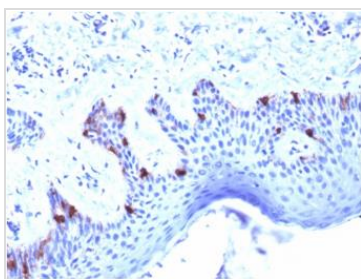
For full product information, images and publications, please visit our [website](#).

DATA IMAGES



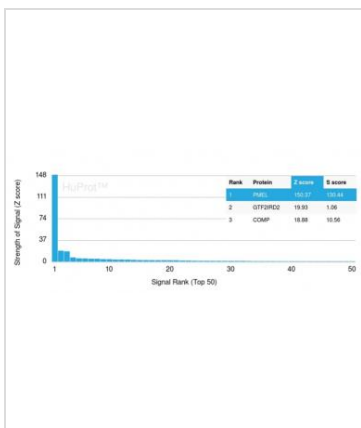
GTX17783 IHC-P Image

IHC-P analysis of human melanoma tissue using GTX17783 Melanoma gp100 antibody [PMEL/2039].



GTX17783 IHC-P Image

IHC-P analysis of human skin tissue using GTX17783 Melanoma gp100 antibody [PMEL/2039].



GTX17783 Protein Array Image

Analysis of Protein Array containing more than 19,000 full-length human proteins using PMEL/gp100 Mouse Monoclonal Antibody (PMEL/2039). Z- and S- Score: The Z-score represents the strength of a signal that a monoclonal antibody produces when binding to a particular protein on the HuProt™ array. Z-scores are described in units of standard deviations (SD's) above the mean value of all signals generated on that array. If targets on HuProt™ are arranged in descending order of the Z-score, the S-score is the difference (also in units of SD's) between the Z-score. S-score therefore represents the relative target specificity of a Monoclonal Antibody to its intended target. A Monoclonal Antibody is considered to be specific to its intended target if the Monoclonal Antibody has an S-score of at least 2.5. For example, if a Monoclonal Antibody binds to protein X with a Z-score of 43 and to protein Y with a Z-score of 14, then the S-score for the binding of that Monoclonal Antibody to protein X is equal to 29.



For full product information, images and publications, please visit our [website](#).