



# SZABO SCANDIC

Part of Europa Biosite

## Produktinformation



Forschungsprodukte & Biochemikalien



Zellkultur & Verbrauchsmaterial



Diagnostik & molekulare Diagnostik



Laborgeräte & Service

Weitere Information auf den folgenden Seiten!  
See the following pages for more information!



### Lieferung & Zahlungsart

siehe unsere [Liefer- und Versandbedingungen](#)

### Zuschläge

- Mindermengenzuschlag
- Trockeneiszuschlag
- Gefahrgutzuschlag
- Expressversand

### SZABO-SCANDIC HandelsgmbH

Quellenstraße 110, A-1100 Wien

T. +43(0)1 489 3961-0

F. +43(0)1 489 3961-7

[mail@szabo-scandic.com](mailto:mail@szabo-scandic.com)

[www.szabo-scandic.com](http://www.szabo-scandic.com)

[linkedin.com/company/szaboscandic](https://www.linkedin.com/company/szaboscandic) 

## Mesothelin antibody [MSLN/2131]

**Cat No. GTX17953**

|                    |                      |
|--------------------|----------------------|
| <b>Host</b>        | Mouse                |
| <b>Clonality</b>   | Monoclonal           |
| <b>Isotype</b>     | IgG2b                |
| <b>Application</b> | IHC-P, Protein Array |
| <b>Reactivity</b>  | Human, Mouse, Rat    |

Package  
100 µg

## APPLICATION

**Application Note**

\*Optimal dilutions/concentrations should be determined by the researcher.

| Suggested dilution | Dilution                      |
|--------------------|-------------------------------|
| IHC-P              | 1-2µg/ml for 30 minutes at RT |
| Protein Array      | Assay dependent               |

**Note : Staining of formalin-fixed tissues requires heating tissue sections in 10mM Tris with 1mM EDTA, pH 9.0, for 45 min at 95°C followed by cooling at RT for 20 minutes.**

Not tested in other applications.

**Calculated MW** 69 kDa. ([Note](#))

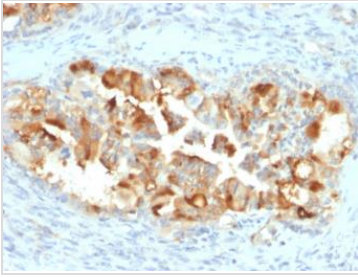
## PROPERTIES

|                      |  |
|----------------------|--|
| <b>Form</b>          | Liquid   |
| <b>Buffer</b>        | 10mM PBS, 0.05% BSA, 0.05% sodium azide (Please contact us for PBS only format)  |
| <b>Storage</b>       | Store as concentrated solution. Centrifuge briefly prior to opening vial. For short-term storage (1-2 weeks), store at 4°C. For long-term storage, aliquot and store at -20°C or below. Avoid multiple freeze-thaw cycles. |
| <b>Concentration</b> | 0.2 mg/ml  |
| <b>Immunogen</b>     | Recombinant fragment (around aa 273-407) of human Mesothelin (MSLN) protein (exact sequence is proprietary)  |
| <b>Purification</b>  | Protein A/G purified   |
| <b>Conjugation</b>   | Unconjugated   |
| <b>Note</b>          | For laboratory use only. Not for any clinical, therapeutic, or diagnostic use in humans or animals. Not for animal or human consumption.   |

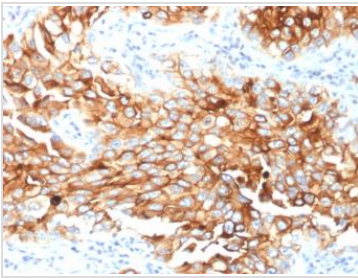


For full product information, images and publications, please visit our [website](#).

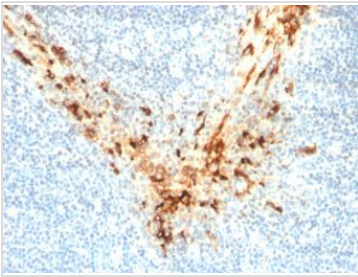
## DATA IMAGES

**GTX17953 IHC-P Image**

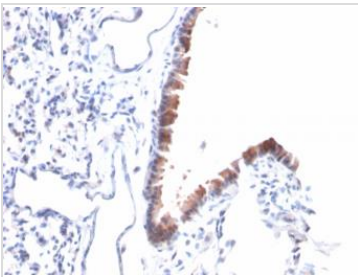
IHC-P analysis of human endometrial carcinoma tissue using GTX17953 Mesothelin antibody [MSLN/2131].

**GTX17953 IHC-P Image**

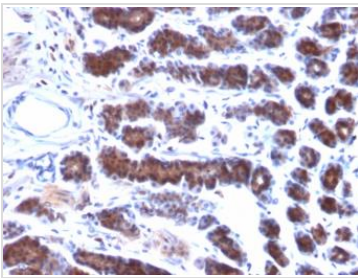
IHC-P analysis of human lung mesothelioma tissue using GTX17953 Mesothelin antibody [MSLN/2131].

**GTX17953 IHC-P Image**

IHC-P analysis of human tonsil tissue using GTX17953 Mesothelin antibody [MSLN/2131].

**GTX17953 IHC-P Image**

IHC-P analysis of mouse lung tissue using GTX17953 Mesothelin antibody [MSLN/2131].

**GTX17953 IHC-P Image**

IHC-P analysis of rat stomach tissue using GTX17953 Mesothelin antibody [MSLN/2131].



For full product information, images and publications, please visit our [website](#).