



SZABO SCANDIC

Part of Europa Biosite

Produktinformation



Forschungsprodukte & Biochemikalien



Zellkultur & Verbrauchsmaterial



Diagnostik & molekulare Diagnostik



Laborgeräte & Service

Weitere Information auf den folgenden Seiten!
See the following pages for more information!



Lieferung & Zahlungsart

siehe unsere [Liefer- und Versandbedingungen](#)

Zuschläge

- Mindermengenzuschlag
- Trockeneiszuschlag
- Gefahrgutzuschlag
- Expressversand

SZABO-SCANDIC HandelsgmbH

Quellenstraße 110, A-1100 Wien

T. +43(0)1 489 3961-0

F. +43(0)1 489 3961-7

mail@szabo-scandic.com

www.szabo-scandic.com

[linkedin.com/company/szaboscandic](https://www.linkedin.com/company/szaboscandic) 

Integrin alpha E antibody [ITGAE/2474]

Cat No. GTX17969

Host	Mouse
Clonality	Monoclonal
Isotype	IgG2b
Application	IHC-P, Protein Array
Reactivity	Human

Package
100 µg

APPLICATION

Application Note

*Optimal dilutions/concentrations should be determined by the researcher.

Suggested dilution	Dilution
IHC-P	1-2µg/ml for 30 minutes at RT
Protein Array	Assay dependent

Note : Staining of formalin-fixed tissues is enhanced by heating tissue sections in 10mM Tris buffer with 1mM EDTA, pH 9.0, for 45 min at 95°C followed by cooling at RT for 20 minutes.

Not tested in other applications.

Calculated MW 130 kDa. ([Note](#))

Specificity/Sensitivity This MAb recognizes a protein of 150kDa, identified as CD103, which is the alpha-E integrin subunit of the heterodimeric alpha-E beta-7 (aEb7) integrin belonging to a small beta-7 integrin subfamily.

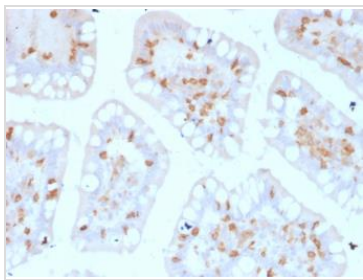
PROPERTIES

Form	Liquid
Buffer	10mM PBS, 0.05% BSA, 0.05% sodium azide (Please contact us for PBS only format)
Storage	Store as concentrated solution. Centrifuge briefly prior to opening vial. For short-term storage (1-2 weeks), store at 4°C. For long-term storage, aliquot and store at -20°C or below. Avoid multiple freeze-thaw cycles.
Concentration	0.2 mg/ml
Immunogen	Recombinant human ITGAE protein fragment (exact sequence is proprietary)
Purification	Protein A/G purified
Conjugation	Unconjugated
Note	For laboratory use only. Not for any clinical, therapeutic, or diagnostic use in humans or animals. Not for animal or human consumption.



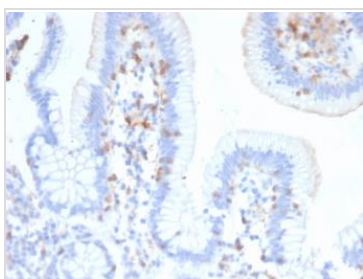
For full product information, images and publications, please visit our [website](#).

DATA IMAGES



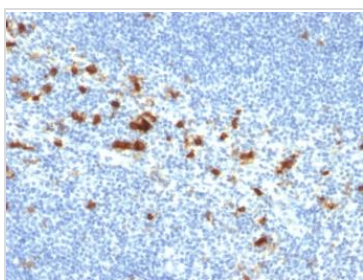
GTX17969 IHC-P Image

IHC-P analysis of human colon tissue using GTX17969 Integrin alpha E antibody [ITGAE/2474].



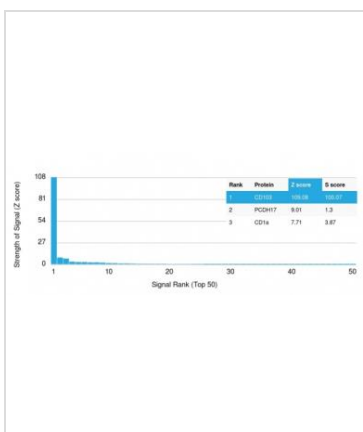
GTX17969 IHC-P Image

IHC-P analysis of human small intestine tissue using GTX17969 Integrin alpha E antibody [ITGAE/2474].



GTX17969 IHC-P Image

IHC-P analysis of human tonsil tissue using GTX17969 Integrin alpha E antibody [ITGAE/2474].



GTX17969 Protein Array Image

Analysis of Protein Array containing more than 19,000 full-length human proteins using CD103 Mouse Monoclonal Antibody (ITGAE/2474). Z- and S- Score: The Z-score represents the strength of a signal that a monoclonal antibody produces when binding to a particular protein on the HuProt™ array. Z-scores are described in units of standard deviations (SD's) above the mean value of all signals generated on that array. If targets on HuProt™ are arranged in descending order of the Z-score, the S-score is the difference (also in units of SD's) between the Z-score. S-score therefore represents the relative target specificity of a Monoclonal Antibody to its intended target. A Monoclonal Antibody is considered to specific to its intended target if the Monoclonal Antibody has an S-score of at least 2.5. For example, if a Monoclonal Antibody binds to protein X with a Z-score of 43 and to protein Y with a Z-score of 14, then the S-score for the binding of that Monoclonal Antibody to protein X is equal to 29.



For full product information, images and publications, please visit our [website](#).