



SZABO SCANDIC

Part of Europa Biosite

Produktinformation



Forschungsprodukte & Biochemikalien



Zellkultur & Verbrauchsmaterial



Diagnostik & molekulare Diagnostik



Laborgeräte & Service

Weitere Information auf den folgenden Seiten!
See the following pages for more information!



Lieferung & Zahlungsart

siehe unsere [Liefer- und Versandbedingungen](#)

Zuschläge

- Mindermengenzuschlag
- Trockeneiszuschlag
- Gefahrgutzuschlag
- Expressversand

SZABO-SCANDIC HandelsgmbH

Quellenstraße 110, A-1100 Wien

T. +43(0)1 489 3961-0

F. +43(0)1 489 3961-7

mail@szabo-scandic.com

www.szabo-scandic.com

[linkedin.com/company/szaboscandic](https://www.linkedin.com/company/szaboscandic) 

GluT1 antibody [GLUT1/2475]

Cat No. GTX17986

Host	Mouse
Clonality	Monoclonal
Isotype	IgG2b
Application	WB, ICC/IF, IHC-P, FACS, ELISA, Protein Array
Reactivity	Human

Package
100 µg

APPLICATION

Application Note

*Optimal dilutions/concentrations should be determined by the researcher.

Suggested dilution	Dilution
WB	1-2µg/ml
ICC/IF	1-2µg/ml
IHC-P	1-2µg/ml for 30 minutes at RT
FACS	1-2µg/10 ⁶ cells
ELISA	1-2µg/ml (for coating)
Protein Array	Assay dependent

Note : Staining of formalin-fixed tissues requires heating tissue sections in 10mM Tris with 1mM EDTA, pH 9.0, for 45 min at 95°C followed by cooling at RT for 20 minutes.

For ELISA coating, recommend using BSA-free format (please contact us for PBS only format).

Not tested in other applications.

Calculated MW 54 kDa. ([Note](#))

PROPERTIES

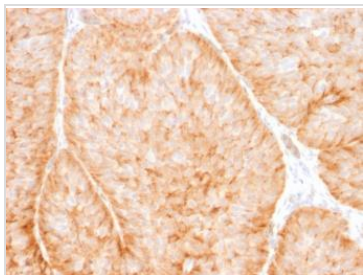
Form	Liquid
Buffer	10mM PBS, 0.05% BSA, 0.05% sodium azide (Please contact us for PBS only format)
Storage	Store as concentrated solution. Centrifuge briefly prior to opening vial. For short-term storage (1-2 weeks), store at 4°C. For long-term storage, aliquot and store at -20°C or below. Avoid multiple freeze-thaw cycles.
Concentration	0.2 mg/ml
Immunogen	Recombinant fragment of human GLUT1 protein (around aa 203-305) (exact sequence is proprietary)
Purification	Protein A/G purified
Conjugation	Unconjugated



For full product information, images and publications, please visit our [website](#).

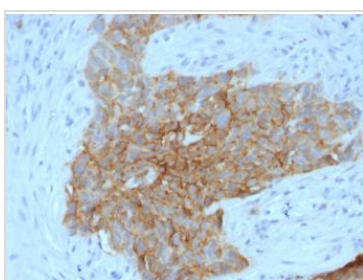
Note For laboratory use only. Not for any clinical, therapeutic, or diagnostic use in humans or animals. Not for animal or human consumption.

DATA IMAGES



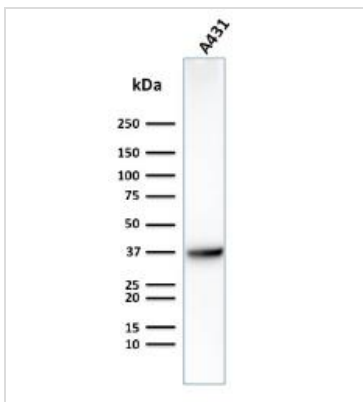
GTX17986 IHC-P Image

IHC-P analysis of human bladder carcinoma tissue using GTX17986 GluT1 antibody [GLUT1/2475].



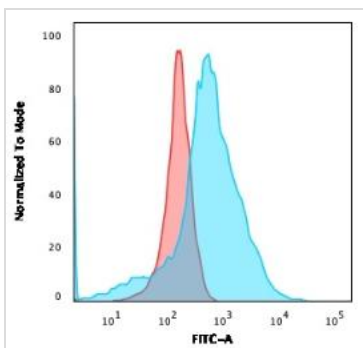
GTX17986 IHC-P Image

IHC-P analysis of human tongue tissue using GTX17986 GluT1 antibody [GLUT1/2475].



GTX17986 WB Image

WB analysis of A431 cell lysate using GTX17986 GluT1 antibody [GLUT1/2475].



GTX17986 FACS Image

FACS analysis of K562 cells using GTX17986 GluT1 antibody [GLUT1/2475].

Blue : Primary antibody

Red : Isotype control



For full product information, images and publications, please visit our [website](#).