



SZABO SCANDIC

Part of Europa Biosite

Produktinformation



Forschungsprodukte & Biochemikalien



Zellkultur & Verbrauchsmaterial



Diagnostik & molekulare Diagnostik



Laborgeräte & Service

Weitere Information auf den folgenden Seiten!
See the following pages for more information!



Lieferung & Zahlungsart

siehe unsere [Liefer- und Versandbedingungen](#)

Zuschläge

- Mindermengenzuschlag
- Trockeneiszuschlag
- Gefahrgutzuschlag
- Expressversand

SZABO-SCANDIC HandelsgmbH

Quellenstraße 110, A-1100 Wien

T. +43(0)1 489 3961-0

F. +43(0)1 489 3961-7

mail@szabo-scandic.com

www.szabo-scandic.com

[linkedin.com/company/szaboscandic](https://www.linkedin.com/company/szaboscandic) 

Emerin antibody [EMD/2167]

Cat No. GTX18054

Host	Mouse
Clonality	Monoclonal
Isotype	IgG1
Application	WB, ICC/IF, IHC-P
Reactivity	Human

Package
100 µg

APPLICATION

Application Note

*Optimal dilutions/concentrations should be determined by the researcher.

Suggested dilution	Dilution
WB	1-2µg/ml
ICC/IF	1-3µg/ml
IHC-P	1-2µg/ml for 30 min at RT

Note : Staining of formalin-fixed tissues requires heating tissue sections in 10mM Tris with 1mM EDTA, pH 9.0, for 45 min at 95°C followed by cooling at RT for 20 minutes.

Not tested in other applications.

Calculated MW 29 kDa. ([Note](#))

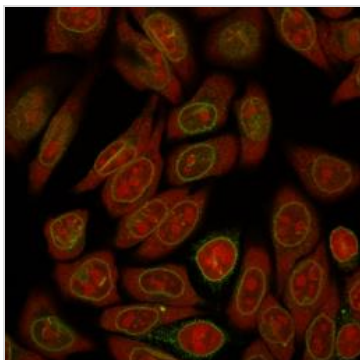
PROPERTIES

Form	Liquid
Buffer	10mM PBS, 0.05% BSA, 0.05% sodium azide (Please contact us for PBS only format)
Storage	Store as concentrated solution. Centrifuge briefly prior to opening vial. For short-term storage (1-2 weeks), store at 4°C. For long-term storage, aliquot and store at -20°C or below. Avoid multiple freeze-thaw cycles.
Concentration	0.2 mg/ml
Immunogen	Recombinant human Emerin protein fragment (around aa 56-167) (exact sequence is proprietary)
Purification	Protein A/G purified
Conjugation	Unconjugated
Note	For laboratory use only. Not for any clinical, therapeutic, or diagnostic use in humans or animals. Not for animal or human consumption.



For full product information, images and publications, please visit our [website](#).

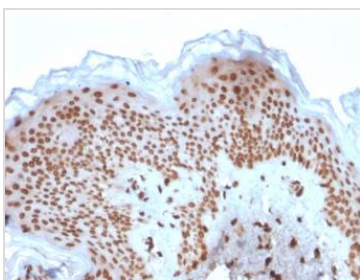
DATA IMAGES

**GTX18054 ICC/IF Image**

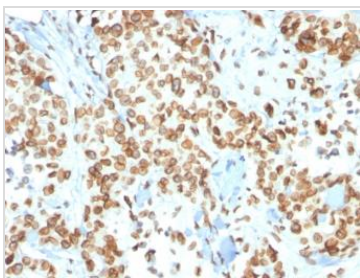
ICC/IF analysis of HeLa cells using GTX18054 Emerin antibody [EMD/2167].

Green : Primary antibody

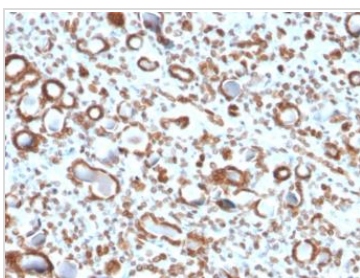
Red : nucleus

**GTX18054 IHC-P Image**

IHC-P analysis of human basal cell carcinoma tissue using GTX18054 Emerin antibody [EMD/2167].

**GTX18054 IHC-P Image**

IHC-P analysis of human breast carcinoma tissue using GTX18054 Emerin antibody [EMD/2167].

**GTX18054 IHC-P Image**

IHC-P analysis of human renal cell carcinoma tissue using GTX18054 Emerin antibody [EMD/2167].



For full product information, images and publications, please visit our [website](#).