



SZABO SCANDIC

Part of Europa Biosite

Produktinformation



Forschungsprodukte & Biochemikalien



Zellkultur & Verbrauchsmaterial



Diagnostik & molekulare Diagnostik



Laborgeräte & Service

Weitere Information auf den folgenden Seiten!
See the following pages for more information!



Lieferung & Zahlungsart

siehe unsere [Liefer- und Versandbedingungen](#)

Zuschläge

- Mindermengenzuschlag
- Trockeneiszuschlag
- Gefahrgutzuschlag
- Expressversand

SZABO-SCANDIC HandelsgmbH

Quellenstraße 110, A-1100 Wien

T. +43(0)1 489 3961-0

F. +43(0)1 489 3961-7

mail@szabo-scandic.com

www.szabo-scandic.com

[linkedin.com/company/szaboscandic](https://www.linkedin.com/company/szaboscandic) 

Rhodopsin antibody [1D4] (Biotin)

Cat No. GTX18143

Host	Mouse
Clonality	Monoclonal
Isotype	IgG1
Application	WB, ICC/IF, IHC-P, IP, ELISA
Reactivity	Human, Mouse, Rat, Bovine

Package
100 µg

APPLICATION

Application Note

*Optimal dilutions/concentrations should be determined by the researcher.

Suggested dilution	Dilution
WB	1:1000
ICC/IF	Assay dependent
IHC-P	1:100
IP	Assay dependent
ELISA	Assay dependent

Not tested in other applications.

Calculated MW 39 kDa. ([Note](#))

Specificity/Sensitivity Detects ~40kDa. Binds specifically to the N-terminus of Rhodopsin. Does not detect Rhodopsin in invertebrates.

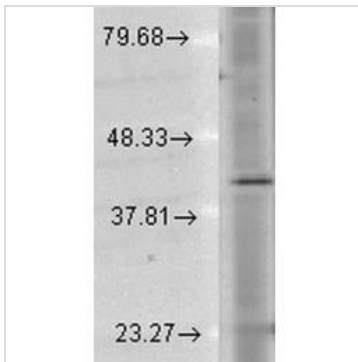
PROPERTIES

Form	Liquid
Buffer	PBS pH7.4, 50% glycerol, 0.09% sodium azide
Storage	Store as concentrated solution. Centrifuge briefly prior to opening vial. For short-term storage (1-2 weeks), store at 4°C. For long-term storage, aliquot and store at -20°C or below. Avoid multiple freeze-thaw cycles.
Concentration	1 mg/ml (Please refer to the vial label for the specific concentration.)
Immunogen	Bovine Rhodopsin
Purification	Protein G Purified
Conjugation	Biotin
Note	For In vitro laboratory use only. Not for any clinical, therapeutic, or diagnostic use in humans or animals. Not for animal or human consumption.



For full product information, images and publications, please visit our [website](#).

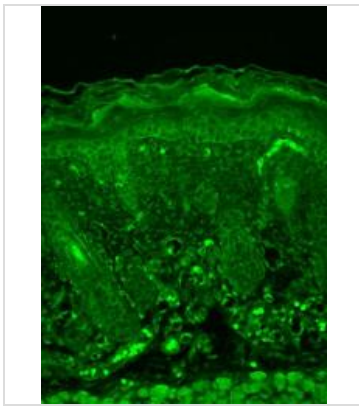
DATA IMAGES

**GTX18143 WB Image**

WB analysis of human cell lysates using GTX18143 Rhodopsin antibody [1D4] (Biotin).

Loading : 15 μ g

Dilution : 1:1000

**GTX18143 IHC-P Image**

IHC-P analysis mouse backskin tissue using GTX18143 Rhodopsin antibody [1D4] (Biotin).

Fixation : Bouin's Fixative

Dilution : 1:100



For full product information, images and publications, please visit our [website](#).