



SZABO SCANDIC

Part of Europa Biosite

Produktinformation



Forschungsprodukte & Biochemikalien



Zellkultur & Verbrauchsmaterial



Diagnostik & molekulare Diagnostik



Laborgeräte & Service

Weitere Information auf den folgenden Seiten!
See the following pages for more information!



Lieferung & Zahlungsart

siehe unsere [Liefer- und Versandbedingungen](#)

Zuschläge

- Mindermengenzuschlag
- Trockeneiszuschlag
- Gefahrgutzuschlag
- Expressversand

SZABO-SCANDIC HandelsgmbH

Quellenstraße 110, A-1100 Wien

T. +43(0)1 489 3961-0

F. +43(0)1 489 3961-7

mail@szabo-scandic.com

www.szabo-scandic.com

[linkedin.com/company/szaboscandic](https://www.linkedin.com/company/szaboscandic) 

CD166 antibody [AZN-L50] (Low endotoxin, azide free)

Cat No. GTX18159

Host	Mouse
Clonality	Monoclonal
Isotype	IgG2a
Application	WB, ICC/IF, IHC-P, IHC-Fr, FACS, IP, Functional Assay
Reactivity	Human

Package
250 µg

APPLICATION

Application Note

*Optimal dilutions/concentrations should be determined by the researcher.

Suggested dilution	Dilution
WB	Assay dependent
ICC/IF	4µg/ml
IHC-P	Assay dependent
IHC-Fr	Assay dependent
FACS	4µg/ml
IP	Assay dependent
Functional Assay	Assay dependent

Note : A non-reduced sample treatment and 6.5 % SDS-Page was used. The mature protein has a band size of 100 kDa and the soluble form 30 kDa.

This antibody was used on methanol/acetone fixed monolayers of cells grown on a glass surface.

Tissue sections were pretreated by heating in a rice steamer in citrate buffer for 10 minutes for antigen retrieval. Tissue sections were blocked with normal horse serum.

Tissue sections were fixed in acetone.

This antibody stains the extracellular domain of CD166. K562 cells (2×10^5) were stained.

Radioactive labelled KG1a cells were lysed and precipitated with 1 µg of antibody coupled to Protein G Sepharose 4 Fast Flow beads.

This antibody functions as an blocking antibody for homotypic CD166-CD166 interaction.

Not tested in other applications.

Calculated MW 65 kDa. ([Note](#))

PROPERTIES

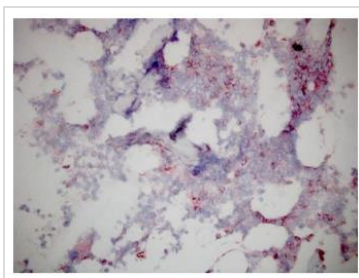
Form	Liquid
Buffer	0.2 µm filtered in PBS
Storage	Store as concentrated solution. Centrifuge briefly prior to opening vial. Store at 4°C.
Concentration	0.5 mg/ml (Please refer to the vial label for the specific concentration.)



For full product information, images and publications, please visit our [website](#).

Immunogen	CD166 expressing K562 cells
Purification	Protein G purified
Endotoxin	< 24 EU/mg (determined with HIT302 LAL Assay)
Conjugation	Unconjugated
Note	For laboratory use only. Not for any clinical, therapeutic, or diagnostic use in humans or animals. Not for animal or human consumption.

DATA IMAGES

**GTX18159 IHC-P Image**

IHC-P analysis of bone marrow tissue using GTX18159 CD166 antibody [AZN-L50] (Low endotoxin, azide free).



For full product information, images and publications, please visit our [website](#).