



SZABO SCANDIC

Part of Europa Biosite

Produktinformation



Forschungsprodukte & Biochemikalien



Zellkultur & Verbrauchsmaterial



Diagnostik & molekulare Diagnostik



Laborgeräte & Service

Weitere Information auf den folgenden Seiten!
See the following pages for more information!



Lieferung & Zahlungsart

siehe unsere [Liefer- und Versandbedingungen](#)

Zuschläge

- Mindermengenzuschlag
- Trockeneiszuschlag
- Gefahrgutzuschlag
- Expressversand

SZABO-SCANDIC HandelsgmbH

Quellenstraße 110, A-1100 Wien

T. +43(0)1 489 3961-0

F. +43(0)1 489 3961-7

mail@szabo-scandic.com

www.szabo-scandic.com

[linkedin.com/company/szaboscandic](https://www.linkedin.com/company/szaboscandic) 

Human Matched Pair Tissue Array - Liver Tumor

Cat. No. GTX20310

Application	IHC-P, ISH
Species	Human

Package
5 slide

PRODUCT

Summary

Tissue was fixed in formalin immediately after excision, and embedded in paraffin. All Genetex's paraffin embedded tissue products including tissue array, tissue sections, and tissue panels can be used for both immunohistochemistry and in-situ hybridization. These products are ideal for rapid cellular localization of RNA and protein expression. At least one of the tissue slides from each lot was stained with H & E to ensure the quality. This product consists of paraffin tissue sections of primary tumor and its adjacent normal tissue; PM consists of paraffin tissue sections of primary tumor and corresponding metastatic tumor. Paraffin tissue sections in each pair are prepared from the same donor. This product line is ideal for localization of tumor-specific genes and tumor metastatic genes. Tissue sections are 5 µm in thickness, and mounted on positively charged glass slide. Please bake slides at 60°C for 30 minutes before use.

Tissue type Tissue pair

PROPERTIES

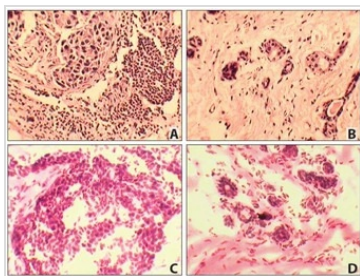
Storage Cool dry at room temperature. 4°C for long term storage.

Note

For laboratory research use only. Not for any clinical, therapeutic, or diagnostic use in humans or animals. Not for animal or human consumption.

Purchasers shall not, and agree not to enable third parties to, analyze, copy, reverse engineer or otherwise attempt to determine the structure or sequence of the product.

DATA IMAGES

**GTX20310 IHC-P Image**

IHC-P analysis of GTX20310 Human Matched Pair Tissue Array - Liver Tumor.



For full product information, images and publications, please visit our [website](#).