



SZABO SCANDIC

Part of Europa Biosite

Produktinformation



Forschungsprodukte & Biochemikalien



Zellkultur & Verbrauchsmaterial



Diagnostik & molekulare Diagnostik



Laborgeräte & Service

Weitere Information auf den folgenden Seiten!
See the following pages for more information!



Lieferung & Zahlungsart

siehe unsere [Liefer- und Versandbedingungen](#)

Zuschläge

- Mindermengenzuschlag
- Trockeneiszuschlag
- Gefahrgutzuschlag
- Expressversand

SZABO-SCANDIC HandelsgmbH

Quellenstraße 110, A-1100 Wien

T. +43(0)1 489 3961-0

F. +43(0)1 489 3961-7

mail@szabo-scandic.com

www.szabo-scandic.com

[linkedin.com/company/szaboscandic](https://www.linkedin.com/company/szaboscandic) 

CD18 antibody [MEM-48]

Cat No. GTX20657

Host	Mouse
Clonality	Monoclonal
Isotype	IgG1
Application	WB, IHC-P, IHC-Fr, FACS, IP, Blocking
Reactivity	Human, Mouse

Reference (2)

Package

100 µg

APPLICATION

Application Note

*Optimal dilutions/concentrations should be determined by the researcher.

Suggested dilution	Dilution
WB	Assay dependent
IHC-P	Assay dependent
IHC-Fr	Assay dependent
FACS	Assay dependent
IP	Assay dependent
Blocking	Assay dependent

Not tested in other applications.

Calculated MW 85 kDa. ([Note](#))

Specificity/Sensitivity This antibody recognizes an epitope involving residues 534-546 in cysteine-rich repeat 3 of the CD18 antigen (integrin beta2 subunit; beta2 integrin).
This product does not react with Dog.

PROPERTIES

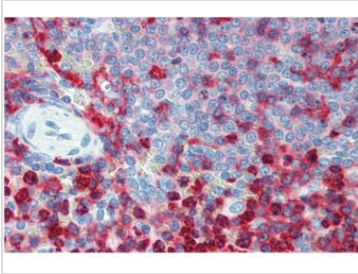
Form	Liquid
Buffer	PBS, 15mM sodium azide
Storage	Store as concentrated solution. Centrifuge briefly prior to opening vial. Store at 4°C. DO NOT FREEZE.
Concentration	1 mg/ml (Please refer to the vial label for the specific concentration.)
Immunogen	Leukocytes of a patient suffering from a LGL-type leukemia.
Purification	Protein A purified
Conjugation	Unconjugated



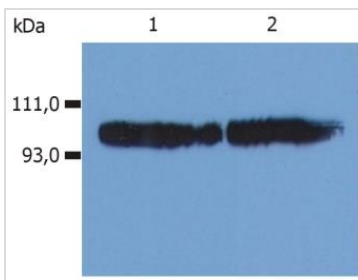
For full product information, images and publications, please visit our [website](#).

Note For laboratory use only. Not for any clinical, therapeutic, or diagnostic use in humans or animals. Not for animal or human consumption.

DATA IMAGES

**GTX20657 IHC-P Image**

IHC-P analysis of human spleen tissue using GTX20657 CD18 antibody [MEM-48].

**GTX20657 WB Image**

WB analysis of various samples (non-reducing) using GTX20657 CD18 antibody [MEM-48].

Lane 1 : KG-1a cell lysate

Lane 2 : HPB-ALL cell lysate



For full product information, images and publications, please visit our [website](#).