



# SZABO SCANDIC

Part of Europa Biosite

## Produktinformation



Forschungsprodukte & Biochemikalien



Zellkultur & Verbrauchsmaterial



Diagnostik & molekulare Diagnostik



Laborgeräte & Service

Weitere Information auf den folgenden Seiten!  
See the following pages for more information!



### Lieferung & Zahlungsart

siehe unsere [Liefer- und Versandbedingungen](#)

### Zuschläge

- Mindermengenzuschlag
- Trockeneiszuschlag
- Gefahrgutzuschlag
- Expressversand

### SZABO-SCANDIC HandelsgmbH

Quellenstraße 110, A-1100 Wien

T. +43(0)1 489 3961-0

F. +43(0)1 489 3961-7

[mail@szabo-scandic.com](mailto:mail@szabo-scandic.com)

[www.szabo-scandic.com](http://www.szabo-scandic.com)

[linkedin.com/company/szaboscandic](https://www.linkedin.com/company/szaboscandic) 

## beta 2 Microglobulin antibody [B2M-01]

**Cat No. GTX20759**

<b>Host</b>	Mouse
<b>Clonality</b>	Monoclonal
<b>Isotype</b>	IgG2a
<b>Application</b>	WB, ICC/IF, IHC-P, FACS, IP, ELISA, RIA
<b>Reactivity</b>	Human

**Package**  
100 µg

## APPLICATION

**Application Note**

\*Optimal dilutions/concentrations should be determined by the researcher.

Suggested dilution	Dilution
WB	Assay dependent
ICC/IF	Assay dependent
IHC-P	Assay dependent
FACS	Assay dependent
IP	Assay dependent
ELISA	Assay dependent
RIA	Assay dependent

Not tested in other applications.

**Calculated MW** 14 kDa. ( [Note](#) )

**Specificity/Sensitivity**

This antibody reacts with beta2-microglobulin (beta2M) associated with cell-surface MHC Class I molecules and other membrane antigens as well as with soluble beta2-microglobulin.  
This product does not react with Mouse,Rabbit,Bovine,Dog,Chicken.

## PROPERTIES

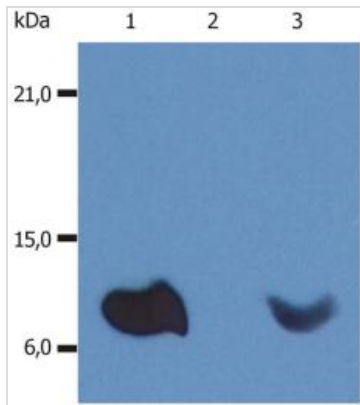
<b>Form</b>	Liquid
<b>Buffer</b>	PBS, 15mM sodium azide
<b>Storage</b>	Store as concentrated solution. Centrifuge briefly prior to opening vial. Store at 4°C. DO NOT FREEZE.
<b>Concentration</b>	1 mg/ml (Please refer to the vial label for the specific concentration.)
<b>Immunogen</b>	Purified human beta2-microglobulin
<b>Purification</b>	Purified by precipitation and chromatography
<b>Conjugation</b>	Unconjugated



For full product information, images and publications, please visit our [website](#).

**Note** For laboratory use only. Not for any clinical, therapeutic, or diagnostic use in humans or animals. Not for animal or human consumption.

## DATA IMAGES

**GTX20759 WB Image**

WB analysis of various samples (non-reducing) using GTX20759 beta 2 Microglobulin antibody [B2M-01].

Lane 1 : Raji cell lysate

Lane 2 : EL4 cell lysate

Lane 3 : U937 cell lysate



For full product information, images and publications, please visit our [website](#).