



SZABO SCANDIC

Part of Europa Biosite

Produktinformation



Forschungsprodukte & Biochemikalien



Zellkultur & Verbrauchsmaterial



Diagnostik & molekulare Diagnostik



Laborgeräte & Service

Weitere Information auf den folgenden Seiten!
See the following pages for more information!



Lieferung & Zahlungsart

siehe unsere [Liefer- und Versandbedingungen](#)

Zuschläge

- Mindermengenzuschlag
- Trockeneiszuschlag
- Gefahrgutzuschlag
- Expressversand

SZABO-SCANDIC HandelsgmbH

Quellenstraße 110, A-1100 Wien

T. +43(0)1 489 3961-0

F. +43(0)1 489 3961-7

mail@szabo-scandic.com

www.szabo-scandic.com

[linkedin.com/company/szaboscandic](https://www.linkedin.com/company/szaboscandic) 

CD45 antibody [MEM-28]

Cat No. GTX28216

Host	Mouse
Clonality	Monoclonal
Isotype	IgG1
Application	WB, ICC/IF, IHC-P, FACS, IP
Reactivity	Human

Package
100 µg

APPLICATION

Application Note

*Optimal dilutions/concentrations should be determined by the researcher.

Suggested dilution	Dilution
WB	Assay dependent
ICC/IF	Assay dependent
IHC-P	Assay dependent
FACS	Assay dependent
IP	Assay dependent

Not tested in other applications.

Calculated MW 147 kDa. ([Note](#))

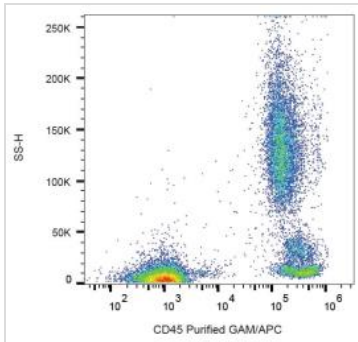
Specificity/Sensitivity This antibody reacts with all alternative forms of human CD45 antigen (Leukocyte Common Antigen). This product does not react with Horse.

PROPERTIES

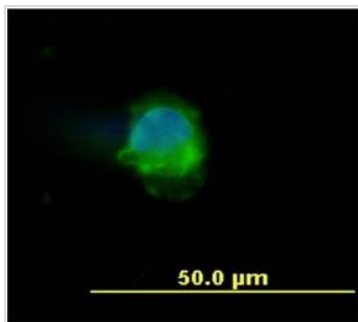
Form	Liquid
Buffer	PBS, 15mM sodium azide
Storage	Store as concentrated solution. Centrifuge briefly prior to opening vial. Store at 4°C. DO NOT FREEZE.
Concentration	1 mg/ml (Please refer to the vial label for the specific concentration.)
Immunogen	Human thymocytes and T lymphocytes.
Purification	Protein A purified
Conjugation	Unconjugated
Note	For laboratory use only. Not for any clinical, therapeutic, or diagnostic use in humans or animals. Not for animal or human consumption.



For full product information, images and publications, please visit our [website](#).

DATA IMAGES

GTX28216 FACS Image

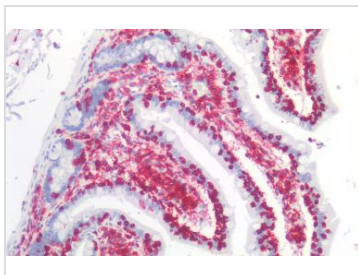
FACS analysis of human peripheral blood using GTX28216 CD45 antibody [MEM-28].


GTX28216 ICC/IF Image

ICC/IF analysis of human peripheral blood mononuclear cells using GTX28216 CD45 antibody [MEM-28].

Green : Primary antibody

Blue : DAPI


GTX28216 IHC-P Image

IHC-P analysis of human small intestine tissue using GTX28216 CD45 antibody [MEM-28].

Diultion : 10μg/ml



For full product information, images and publications, please visit our [website](#).