



# SZABO SCANDIC

Part of Europa Biosite

## Produktinformation



Forschungsprodukte & Biochemikalien



Zellkultur & Verbrauchsmaterial



Diagnostik & molekulare Diagnostik



Laborgeräte & Service

Weitere Information auf den folgenden Seiten!  
See the following pages for more information!



### Lieferung & Zahlungsart

siehe unsere [Liefer- und Versandbedingungen](#)

### Zuschläge

- Mindermengenzuschlag
- Trockeneiszuschlag
- Gefahrgutzuschlag
- Expressversand

### SZABO-SCANDIC HandelsgmbH

Quellenstraße 110, A-1100 Wien

T. +43(0)1 489 3961-0

F. +43(0)1 489 3961-7

[mail@szabo-scandic.com](mailto:mail@szabo-scandic.com)

[www.szabo-scandic.com](http://www.szabo-scandic.com)

[linkedin.com/company/szaboscandic](https://www.linkedin.com/company/szaboscandic) 

## CD18 antibody [MEM-148]

**Cat No. GTX28220**

<b>Host</b>	Mouse
<b>Clonality</b>	Monoclonal
<b>Isotype</b>	IgG1
<b>Application</b>	WB, FACS, IP, Functional Assay
<b>Reactivity</b>	Human

Reference ( 1 )  
 Package  
 100 µg

## APPLICATION

**Application Note**

\*Optimal dilutions/concentrations should be determined by the researcher.

Suggested dilution	Dilution
WB	Assay dependent
FACS	Assay dependent
IP	Assay dependent
Functional Assay	Assay dependent

Not tested in other applications.

<b>Calculated MW</b>	85 kDa. ( <a href="#">Note</a> )
<b>Specificity/Sensitivity</b>	This antibody recognizes an epitope on CD18 which is essentially inaccessible in intact integrin molecules on resting leukocytes, but is exposed on high-affinity state of LFA-1 or on unassociated CD18. This product does not react with Pig.

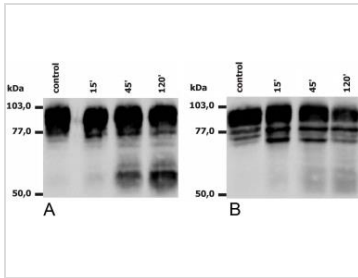
## PROPERTIES

<b>Form</b>	Liquid
<b>Buffer</b>	PBS, 15mM sodium azide
<b>Storage</b>	Store as concentrated solution. Centrifuge briefly prior to opening vial. Store at 4°C. DO NOT FREEZE.
<b>Concentration</b>	1 mg/ml (Please refer to the vial label for the specific concentration.)
<b>Immunogen</b>	Peripheral blood mononuclear cells
<b>Purification</b>	Protein A purified
<b>Conjugation</b>	Unconjugated
<b>Note</b>	For laboratory use only. Not for any clinical, therapeutic, or diagnostic use in humans or animals. Not for animal or human consumption.



For full product information, images and publications, please visit our [website](#).

## DATA IMAGES

**GTX28220 WB Image**

WB analysis of PMA-activated neutrophils (A) and monocytes (B) using GTX28220 CD18 antibody [MEM-148]. The antibody MEM-148 recognizes the lower 65 to 70 kDa zone (activation marker) as well as the upper 78 to 96 kDa zone (CD18).



For full product information, images and publications, please visit our [website](#).