



SZABO SCANDIC

Part of Europa Biosite

Produktinformation



Forschungsprodukte & Biochemikalien



Zellkultur & Verbrauchsmaterial



Diagnostik & molekulare Diagnostik



Laborgeräte & Service

Weitere Information auf den folgenden Seiten!
See the following pages for more information!



Lieferung & Zahlungsart

siehe unsere [Liefer- und Versandbedingungen](#)

Zuschläge

- Mindermengenzuschlag
- Trockeneiszuschlag
- Gefahrgutzuschlag
- Expressversand

SZABO-SCANDIC HandelsgmbH

Quellenstraße 110, A-1100 Wien

T. +43(0)1 489 3961-0

F. +43(0)1 489 3961-7

mail@szabo-scandic.com

www.szabo-scandic.com

[linkedin.com/company/szaboscandic](https://www.linkedin.com/company/szaboscandic) 

CD20 antibody [MEM-97]

Cat No. GTX28237

| | |
|--------------------|-------------------------|
| Host | Mouse |
| Clonality | Monoclonal |
| Isotype | IgG1 |
| Application | FACS, IP |
| Reactivity | Human, Bovine, Dog, Pig |

Package
100 µg

APPLICATION

Application Note

*Optimal dilutions/concentrations should be determined by the researcher.

| Suggested dilution | Dilution |
|--------------------|-----------------|
| FACS | Assay dependent |
| IP | Assay dependent |

Not tested in other applications.

Calculated MW 33 kDa. ([Note](#))

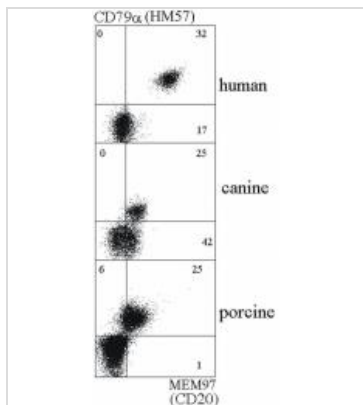
PROPERTIES

| | |
|----------------------|--|
| Form | Liquid |
| Buffer | PBS, 15mM sodium azide |
| Storage | Store as concentrated solution. Centrifuge briefly prior to opening vial. Store at 4°C. DO NOT FREEZE. |
| Concentration | 1 mg/ml (Please refer to the vial label for the specific concentration.) |
| Immunogen | Raji human Burkitt's lymphoma cell line |
| Purification | Protein A purified |
| Conjugation | Unconjugated |
| Note | For laboratory use only. Not for any clinical, therapeutic, or diagnostic use in humans or animals. Not for animal or human consumption. |



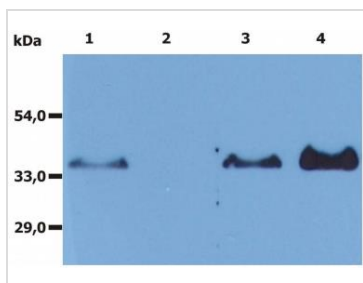
For full product information, images and publications, please visit our [website](#).

DATA IMAGES



GTX28237 FACS Image

FACS analysis of human, dog, and pig B lymphocytes using GTX28237 CD20 antibody [MEM-97].



GTX28237 IP Image

IP analysis of Raji cell lysate using GTX28237 CD20 antibody [MEM-97]. The signal was detected by another Rabbit polyclonal anti-CD20 antibody in WB assay.

- Lane 1 : Raji cell lysate
- Lane 2 : Immunoprecipitate by mouse IgG1 isotype control
- Lane 3 : Raji cell lysate
- Lane 4 : Immunoprecipitate by GTX28237



For full product information, images and publications, please visit our [website](#).