



SZABO SCANDIC

Part of Europa Biosite

Produktinformation



Forschungsprodukte & Biochemikalien



Zellkultur & Verbrauchsmaterial



Diagnostik & molekulare Diagnostik



Laborgeräte & Service

Weitere Information auf den folgenden Seiten!
See the following pages for more information!



Lieferung & Zahlungsart

siehe unsere [Liefer- und Versandbedingungen](#)

Zuschläge

- Mindermengenzuschlag
- Trockeneiszuschlag
- Gefahrgutzuschlag
- Expressversand

SZABO-SCANDIC HandelsgmbH

Quellenstraße 110, A-1100 Wien

T. +43(0)1 489 3961-0

F. +43(0)1 489 3961-7

mail@szabo-scandic.com

www.szabo-scandic.com

[linkedin.com/company/szaboscandic](https://www.linkedin.com/company/szaboscandic) 

SARS-CoV-2 (COVID-19) Spike S1 FFPE 293T cell pellet block

Cat No. GTX435643

Application	IHC-P (cell pellet)
Reactivity	SARS Coronavirus 2
Species	SARS Coronavirus 2

Package
1 block

PRODUCT

Summary

Block size is 2.2 x 2.2 x 0.5 cm (expected to yield ~40-50 sections of ~4-5 µm thickness), but can vary slightly. Cell pellet consists of 293T cells overexpressing SARS-CoV-2 spike (S1 subunit) (C-terminal His-tagged) protein fixed with 4% PFA (15 min, room temp) 48 hrs post-transfection, and then embedded in paraffin. Please see the corresponding overexpression cell lysate ([GTX535663](#)).

APPLICATION

Application Note

*Optimal dilutions/concentrations should be determined by the researcher.

Suggested dilution	Dilution
IHC-P (cell pellet)	Assay dependent

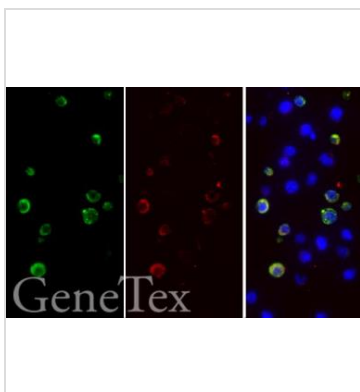
Not tested in other applications.

PROPERTIES

Storage Store at room temperature.

Note For laboratory use only. Not for any clinical, therapeutic, or diagnostic use in humans or animals. Not for animal or human consumption.

DATA IMAGES

**GTX435643 IHC-P (cell pellet) Image**

SARS-CoV-2 (COVID-19) spike antibody detects 6X His-tagged SARS-CoV-2 (COVID-19) spike (S1) protein by immunohistochemical analysis.

Sample: Paraffin-embedded SARS-CoV-2 (COVID-19) Spike (S1) FFPE Cell Pellet Block (GTX435643).

Green: 6X His-tagged SARS-CoV-2 (COVID-19) spike (S1) protein stained by SARS-CoV-2 (COVID-19) spike antibody (GTX135356) diluted at 1:1000.

Red: 6X His-tagged SARS-CoV-2 (COVID-19) spike (S1) protein stained by 6X His tag antibody [GT359] (GTX628914) diluted at 1:1000.

Blue: Fluoroshield with DAPI (GTX30920).

Antigen Retrieval: Citrate buffer, pH 6.0, 15 min



For full product information, images and publications, please visit our [website](#).