



SZABO SCANDIC

Part of Europa Biosite

Produktinformation



Forschungsprodukte & Biochemikalien



Zellkultur & Verbrauchsmaterial



Diagnostik & molekulare Diagnostik



Laborgeräte & Service

Weitere Information auf den folgenden Seiten!
See the following pages for more information!



Lieferung & Zahlungsart

siehe unsere [Liefer- und Versandbedingungen](#)

Zuschläge

- Mindermengenzuschlag
- Trockeneiszuschlag
- Gefahrgutzuschlag
- Expressversand

SZABO-SCANDIC HandelsgmbH

Quellenstraße 110, A-1100 Wien

T. +43(0)1 489 3961-0

F. +43(0)1 489 3961-7

mail@szabo-scandic.com

www.szabo-scandic.com

[linkedin.com/company/szaboscandic](https://www.linkedin.com/company/szaboscandic) 

293T FFPE Cell Pellet Block

Cat No. GTX435670

Application	IHC-P
Reactivity	Human
Species	Human

Package
1 block

PRODUCT

Summary

Block size is 2.2 x 2.2 x 0.5 cm (expected to yield ~40-50 sections of ~4-5 μ m thickness), but can vary slightly. Cell pellet consists of 293T cells fixed with 4% PFA (15 min, room temp), and then embedded in paraffin. Please see the corresponding overexpression cell lysate ([GTX535673](#))

APPLICATION

Application Note

*Optimal dilutions/concentrations should be determined by the researcher.

Suggested dilution	Dilution
IHC-P	Assay dependent

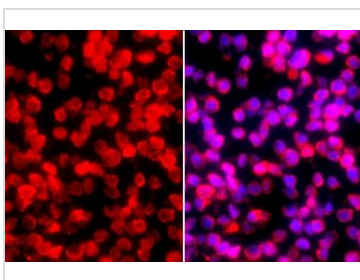
Not tested in other applications.

PROPERTIES

Storage Store at room temperature.

Note For *In vitro* laboratory use only. Not for any clinical, therapeutic, or diagnostic use in humans or animals. Not for animal or human consumption.

DATA IMAGES

**GTX435670 IHC-P Image**

GAPDH antibody [GT239] detects GAPDH protein at cytoplasm by immunohistochemical analysis.

Sample: 293T FFPE Cell Pellet Block (GTX435670).

Red: GAPDH stained by GAPDH antibody [GT239] (GTX435670) diluted at 1:500.

Blue: Fluoroshield with DAPI (GTX30920).

Antigen Retrieval: Citrate buffer, pH 6.0, 15 min



For full product information, images and publications, please visit our [website](#).