



SZABO SCANDIC

Part of Europa Biosite

Produktinformation



Forschungsprodukte & Biochemikalien



Zellkultur & Verbrauchsmaterial



Diagnostik & molekulare Diagnostik



Laborgeräte & Service

Weitere Information auf den folgenden Seiten!
See the following pages for more information!



Lieferung & Zahlungsart

siehe unsere [Liefer- und Versandbedingungen](#)

Zuschläge

- Mindermengenzuschlag
- Trockeneiszuschlag
- Gefahrgutzuschlag
- Expressversand

SZABO-SCANDIC HandelsgmbH

Quellenstraße 110, A-1100 Wien

T. +43(0)1 489 3961-0

F. +43(0)1 489 3961-7

mail@szabo-scandic.com

www.szabo-scandic.com

[linkedin.com/company/szaboscandic](https://www.linkedin.com/company/szaboscandic) 

SARS-CoV-2 (COVID-19) Nucleocapsid overexpression 293T whole cell lysate

Cat No. GTX535665

Application	WB, ELISA
Reactivity	SARS Coronavirus 2
Species	SARS Coronavirus 2

Package
200 µg

PRODUCT

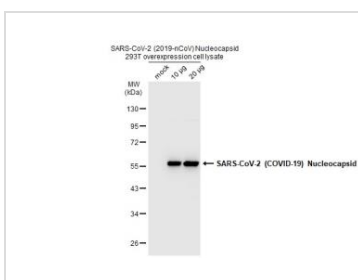
Summary

Whole-cell lysate of 293T cells overexpressing SARS-CoV-2 nucleocapsid protein (full-length, N-terminal 3x Flag-tagged). The translated amino acid sequence is based on QHD43423.2. Lysate prepared in RIPA buffer with no reducing agents and is unboiled. Please see matched control 293T lysate ([GTX535673](#))

PROPERTIES

Form	Liquid
Buffer	50 mM Tris-HCl (pH 8.0), 150 mM NaCl, 0.5% sodium deoxycholate, 1% Triton X-100, 0.25% SDS, 1 mM PMSF, 5 µg/ml Leupeptin, 2 µg/ml Aprotinin, 1 µg/ml Pepstatin A, 0.025% ProClin 300
Storage	Store as concentrated solution. Centrifuge briefly prior to opening vial. Aliquot and store at -20°C or below. Avoid multiple freeze-thaw cycles.
Concentration	1 mg/ml
Conjugation	Unconjugated
Note	For laboratory use only. Not for any clinical, therapeutic, or diagnostic use in humans or animals. Not for animal or human consumption.

DATA IMAGES

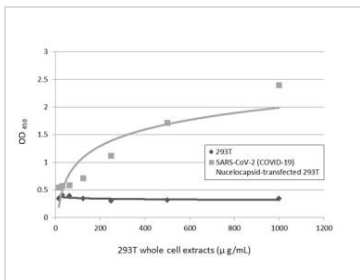


GTX535665 WB Image

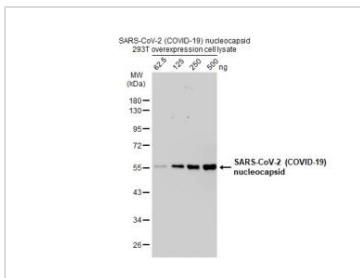
Non-transfected and transfected 293T whole cell extracts were separated by 10% SDS-PAGE, and the membrane was blotted with SARS-CoV-2 (COVID-19) nucleocapsid antibody (GTX135357) diluted at 1:5000. The HRP-conjugated anti-rabbit IgG antibody (GTX213110-01) was used to detect the primary antibody.



For full product information, images and publications, please visit our [website](#).


GTX535665 ELISA Image

Sandwich ELISA detection of non-transfected (GTX535673) and SARS-CoV-2 nucleocapsid (full length) transfected (GTX535665) 293T whole cell extracts using SARS-CoV / SARS-CoV-2 (COVID-19) nucleocapsid antibody [6H3] (GTX632269) as capture antibody at concentration of 5 µg/mL and SARS-CoV-2 (COVID-19) nucleocapsid antibody (GTX135357) as detection antibody at concentration of 1 µg/mL. Rabbit IgG antibody (HRP) (GTX213110-01) was diluted at 1:10000 and used to detect the primary antibody.


GTX535665 WB Image

SARS-CoV-2 (COVID-19) nucleocapsid 293T overexpression cell lysates (GTX535665) were separated by 10% SDS-PAGE, and the membrane was blotted with SARS-CoV-2 (COVID-19) nucleocapsid antibody (GTX135357) diluted at 1:1000. The HRP-conjugated anti-rabbit IgG antibody (GTX213110-01) was used to detect the primary antibody.



For full product information, images and publications, please visit our [website](#).