



# SZABO SCANDIC

Part of Europa Biosite

## Produktinformation



Forschungsprodukte & Biochemikalien



Zellkultur & Verbrauchsmaterial



Diagnostik & molekulare Diagnostik



Laborgeräte & Service

Weitere Information auf den folgenden Seiten!  
See the following pages for more information!



### Lieferung & Zahlungsart

siehe unsere [Liefer- und Versandbedingungen](#)

### Zuschläge

- Mindermengenzuschlag
- Trockeneiszuschlag
- Gefahrgutzuschlag
- Expressversand

### SZABO-SCANDIC HandelsgmbH

Quellenstraße 110, A-1100 Wien

T. +43(0)1 489 3961-0

F. +43(0)1 489 3961-7

[mail@szabo-scandic.com](mailto:mail@szabo-scandic.com)

[www.szabo-scandic.com](http://www.szabo-scandic.com)

[linkedin.com/company/szaboscandic](https://www.linkedin.com/company/szaboscandic) 

# CA19-9 ELISA kit

**Cat. No. GTX540620**

<b>Application</b>	ELISA, Sandwich ELISA
<b>Reactivity</b>	Species independent

**Package**  
96 test

## PRODUCT

### Summary

The GeneTex CA19-9 ELISA Kit is an in vitro assay tool for the quantitative measurement of CA19-9, with the lowest detectable concentration being 0.26 U/ml. Unlike the widely used CA19-9 antibody, this kit utilizes a Neu5Ac-specific antibody, GTX635389, that selectively targets CA19-9 without cross-reacting with CA19-9 analogs where Neu5Ac is replaced by Neu5Gc.

## APPLICATION

### Application Note

The suitable sample types include cell culture supernatant, plasma and serum. The suggested sample loading amount is 50 µl per well. Please see the protocol for detailed procedure.

Assay range : Please refer to the protocol.

## PROPERTIES

**Storage** The entire kit can be stored at 2-8°C for up to 6 months.

**Conjugation** Horseradish peroxidase(HRP)

**Note** For In vitro laboratory use only. Not for any clinical, therapeutic, or diagnostic use in humans or animals. Not for animal or human consumption.

## DATA IMAGES

A. Recovery				
Sample type	Serum	EDTA-plasma	Cell Culture Supernatant	
Average (%)	96.4	98.9	92.8	
Range (%)	93-102	97-102	86-101	
B. Linearity				
	Sample type	Serum	EDTA-plasma	Cell Culture Supernatant
1:2	Average (%)	128	90	88
	Range (%)	105-138	79-102	80-94
	Average (%)	133	98	84
1:4	Range (%)	115-141	87-117	74-88

### GTX540620 ELISA Image

A. Recovery assay was determined by spiking human CA19-9 at three levels throughout the assay range in the listed samples. B. To determine linearity, the listed samples were spiked with high level human CA19-9 and diluted with Sample Diluent CA1 in 1:2 and 1:4. The value was assessed by comparing it to undiluted samples.



For full product information, images and publications, please visit our [website](https://www.genetex.com).

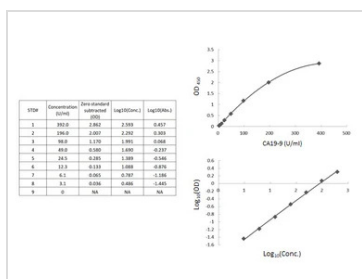
CA19-9 (U/ml)	GTX540620	A	B	C
Level 1	50.3	69.9	19.3	38.0
Level 2	373.4	714.0	154.0	379.0

### GTX540620 ELISA Image

Sandwich ELISA detection of tumor marker controls using CA19-9 ELISA kit (GTX540620). A, B, and C represent data tested using three different commercially available IVD products.



### GTX540620 ELISA Image



### GTX540620 ELISA Image

Typical standard curves of CA19-9 ELISA kit (GTX540620).



For full product information, images and publications, please visit our [website](https://www.genetex.com).