



SZABO SCANDIC

Part of Europa Biosite

Produktinformation



Forschungsprodukte & Biochemikalien



Zellkultur & Verbrauchsmaterial



Diagnostik & molekulare Diagnostik



Laborgeräte & Service

Weitere Information auf den folgenden Seiten!
See the following pages for more information!



Lieferung & Zahlungsart

siehe unsere [Liefer- und Versandbedingungen](#)

Zuschläge

- Mindermengenzuschlag
- Trockeneiszuschlag
- Gefahrgutzuschlag
- Expressversand

SZABO-SCANDIC HandelsgmbH

Quellenstraße 110, A-1100 Wien

T. +43(0)1 489 3961-0

F. +43(0)1 489 3961-7

mail@szabo-scandic.com

www.szabo-scandic.com

[linkedin.com/company/szaboscandic](https://www.linkedin.com/company/szaboscandic) 

CINP antibody [AT1G10]

Cat No. GTX57694

Host	Mouse
Clonality	Monoclonal
Isotype	IgG1
Application	WB
Reactivity	Human

Package
100 µl

APPLICATION

Application Note

*Optimal dilutions/concentrations should be determined by the researcher.

Suggested dilution	Dilution
WB	Assay dependent

Not tested in other applications.

Calculated MW 24 kDa. ([Note](#))

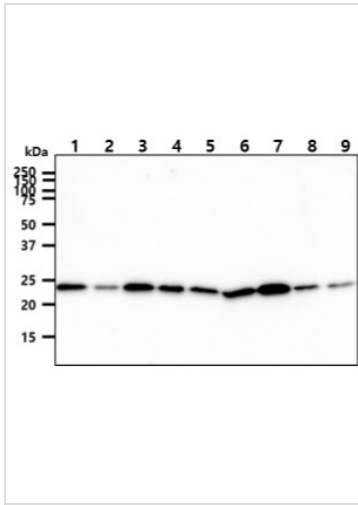
PROPERTIES

Form	Liquid
Buffer	PBS (pH 7.4), 0.02% sodium azide, 10% glycerol
Storage	Store as concentrated solution. Centrifuge briefly prior to opening vial. For short-term storage (1-2 weeks), store at 4°C. For long-term storage, aliquot and store at -20°C or below. Avoid multiple freeze-thaw cycles.
Concentration	1 mg/ml (Please refer to the vial label for the specific concentration.)
Immunogen	The clone AT1G10 is derived from hybridization of mouse F2 myeloma cells with spleen cells from BALB/c mice immunized with a recombinant human CINP protein.
Purification	Protein A Purified
Conjugation	Unconjugated
Note	For laboratory use only. Not for any clinical, therapeutic, or diagnostic use in humans or animals. Not for animal or human consumption.



For full product information, images and publications, please visit our [website](#).

DATA IMAGES

**GTX57694 WB Image**

WB analysis of various samples using GTX57694 CINP antibody.

- Lane 1 : Jurkat whole cell lysate
 - Lane 2 : K562 whole cell lysate
 - Lane 3 : 293T whole cell lysate
 - Lane 4 : HepG2 whole cell lysate
 - Lane 5 : A549 whole cell lysate
 - Lane 6 : MCF-7 whole cell lysate
 - Lane 7 : LNCap whole cell lysate
 - Lane 8 : HeLa whole cell lysate
 - Lane 9 : SK-OV-3 whole cell lysate
- Loading : 40 μ g
Dilution : 1:1000



For full product information, images and publications, please visit our [website](#).