



SZABO SCANDIC

Part of Europa Biosite

Produktinformation



Forschungsprodukte & Biochemikalien



Zellkultur & Verbrauchsmaterial



Diagnostik & molekulare Diagnostik



Laborgeräte & Service

Weitere Information auf den folgenden Seiten!
See the following pages for more information!



Lieferung & Zahlungsart

siehe unsere [Liefer- und Versandbedingungen](#)

Zuschläge

- Mindermengenzuschlag
- Trockeneiszuschlag
- Gefahrgutzuschlag
- Expressversand

SZABO-SCANDIC HandelsgmbH

Quellenstraße 110, A-1100 Wien

T. +43(0)1 489 3961-0

F. +43(0)1 489 3961-7

mail@szabo-scandic.com

www.szabo-scandic.com

[linkedin.com/company/szaboscandic](https://www.linkedin.com/company/szaboscandic) 

FIS1 antibody [GT9810]

Cat No. GTX631209

Host	Mouse
Clonality	Monoclonal
Isotype	IgG2a
Application	WB, ICC/IF
Reactivity	Human, Mouse

Reference (2)

Package

25 µl, 100 µl

APPLICATION

Application Note

*Optimal dilutions/concentrations should be determined by the researcher.

Suggested dilution	Dilution
WB	1:500-1:3000
ICC/IF	1:100-1:20000

Not tested in other applications.

Calculated MW 17 kDa. ([Note](#))

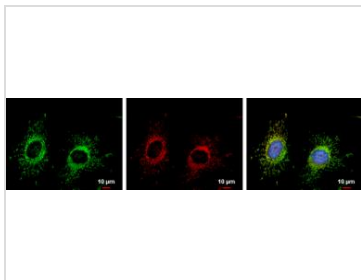
PROPERTIES

Form	Liquid
Buffer	PBS
Storage	Store as concentrated solution. Centrifuge briefly prior to opening vial. For short-term storage (1-2 weeks), store at 4°C. For long-term storage, aliquot and store at -20°C or below. Avoid multiple freeze-thaw cycles.
Concentration	1.90 mg/ml (Please refer to the vial label for the specific concentration.)
Immunogen	Full length human FIS1 Recombinant protein.
Purification	Affinity purified by Protein G.
Conjugation	Unconjugated
Note	For laboratory use only. Not for any clinical, therapeutic, or diagnostic use in humans or animals. Not for animal or human consumption.



For full product information, images and publications, please visit our [website](#).

DATA IMAGES

**GTX631209 ICC/IF Image**

FIS1 antibody detects FIS1 protein at mitochondria by immunofluorescent analysis.

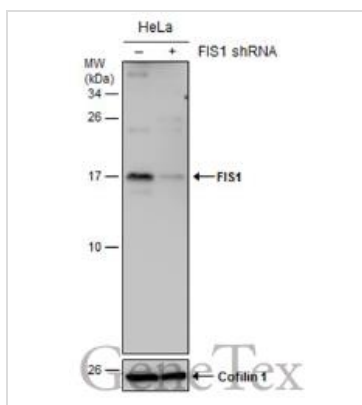
Sample: HeLa cells were fixed in 2% paraformaldehyde/culture medium at 37°C for 30 min.

Green: FIS1 protein stained by FIS1 antibody (GTX631209) diluted at 1:20000.

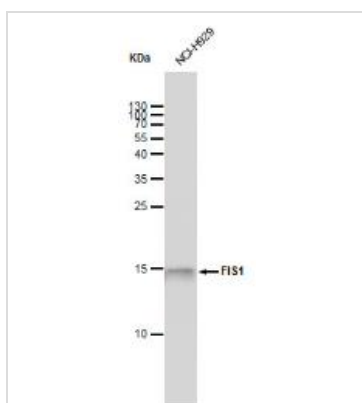
Red: MitoTrackerR Red CMXRos, a mitochondria tracker.

Blue: Hoechst 33342 staining.

Scale bar = 10 µm.

**GTX631209 WB Image**

Non-transfected (-) and transfected (+) HeLa whole cell extracts (30 µg) were separated by 15% SDS-PAGE, and the membrane was blotted with FIS1 antibody [GT9810] (GTX631209) diluted at 1:500.

**GTX631209 WB Image**

FIS1 antibody [GT9810] detects FIS1 protein by western blot analysis. Whole cell extracts (30 µg) was separated by 15 % SDS-PAGE, and blotted with FIS1 antibody [GT9810] (GTX631209) diluted by 1:1000



For full product information, images and publications, please visit our [website](#).