



SZABO SCANDIC

Part of Europa Biosite

Produktinformation



Forschungsprodukte & Biochemikalien



Zellkultur & Verbrauchsmaterial



Diagnostik & molekulare Diagnostik



Laborgeräte & Service

Weitere Information auf den folgenden Seiten!
See the following pages for more information!



Lieferung & Zahlungsart

siehe unsere [Liefer- und Versandbedingungen](#)

Zuschläge

- Mindermengenzuschlag
- Trockeneiszuschlag
- Gefahrgutzuschlag
- Expressversand

SZABO-SCANDIC Handels GmbH

Quellenstraße 110, A-1100 Wien

T. +43(0)1 489 3961-0

F. +43(0)1 489 3961-7

mail@szabo-scandic.com

www.szabo-scandic.com

[linkedin.com/company/szaboscandic](https://www.linkedin.com/company/szaboscandic) 

RAS (G12D Mutant) antibody [HL10]

Cat No. GTX635362

Host	Rabbit
Clonality	Monoclonal
Isotype	IgG
Application	WB, IHC-P
Reactivity	Human, Mouse

★★★★★ Review (3)

Package
100 µl, 25 µl

PRODUCT

Summary

KRAS has the distinction of being a preeminent oncoprotein as it is mutated in more than 85% of RAS-altered cancers. The RAS (G12D Mutant) antibody [HL10] is the first commercially available recombinant antibody that demonstrates exceptional specificity by paraffin-embedded immunohistochemistry and western blot for the RAS G12D mutant protein.

APPLICATION

Application Note

*Optimal dilutions/concentrations should be determined by the researcher.

Suggested dilution	Dilution
WB	1:500-1:3000
IHC-P	1:25-1:100

Note : Suggest using high sensitivity ECL for optimization. GTX14698 Trident femto Western HRP Substrate is recommended.

Not tested in other applications.

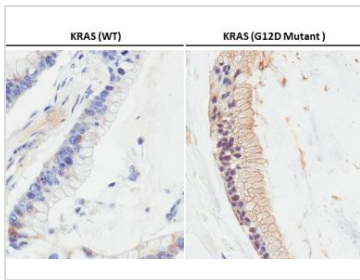
PROPERTIES

Form	Liquid
Buffer	PBS
Storage	Store as concentrated solution. Centrifuge briefly prior to opening vial. For short-term storage (1-2 weeks), store at 4°C. For long-term storage, aliquot and store at -20°C or below. Avoid multiple freeze-thaw cycles.
Concentration	1.5 mg/ml (Please refer to the vial label for the specific concentration.)
Immunogen	Synthetic peptide corresponding to human RAS (G12D Mutant).
Purification	Affinity purified by Protein A.
Conjugation	Unconjugated
Note	For laboratory use only. Not for any clinical, therapeutic, or diagnostic use in humans or animals. Not for animal or human consumption.



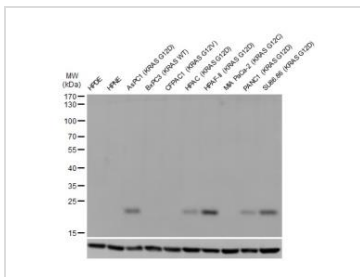
For full product information, images and publications, please visit our [website](#).

DATA IMAGES



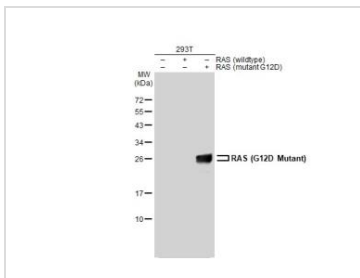
GTX635362 IHC-P Image

RAS (G12D Mutant) antibody [HL10] detects RAS (G12D Mutant) protein by immunohistochemical analysis. Sample: Paraffin-embedded human wild-type (left) and KRAS G12D mutant (right) pancreatic tumor. RAS (G12D Mutant) stained by RAS (G12D Mutant) antibody [HL10] (GTX635362) diluted at 1:50.



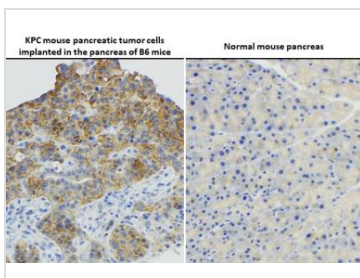
GTX635362 WB Image

Various whole cell extracts were separated by SDS-PAGE, and the membrane was blotted with RAS (G12D Mutant) antibody [HL10] (GTX635362) diluted at 1:1000.



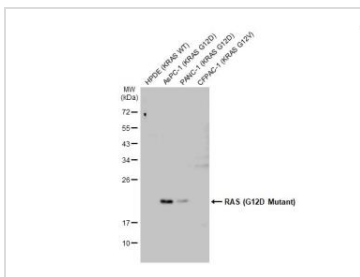
GTX635362 WB Image

Non-transfected (–) and transfected (+) Various whole cell extracts (30 µg) were separated by 12% SDS-PAGE, and the membrane was blotted with RAS (G12D Mutant) antibody [HL10] (GTX635362) diluted at 1:3000. The HRP-conjugated anti-rabbit IgG antibody (GTX213110-01) was used to detect the primary antibody.



GTX635362 IHC-P Image

RAS (G12D Mutant) antibody [HL10] detects RAS (G12D Mutant) protein at by immunohistochemical analysis. Sample: Paraffin-embedded KPC mouse pancreatic tumor cells implanted in the pancreas of B6 mice (left) and normal mouse pancreas (right). RAS (G12D Mutant) stained by RAS (G12D Mutant) antibody [HL10] (GTX635362) diluted at 1:75. Antigen Retrieval: Citrate buffer, pH 6.0, 40 min



GTX635362 WB Image

Various whole cell extracts (30 µg) were separated by 12% SDS-PAGE, and the membrane was blotted with RAS (G12D Mutant) antibody [HL10] (GTX635362) diluted at 1:1000. The HRP-conjugated anti-rabbit IgG antibody (GTX213110-01) was used to detect the primary antibody, and the signal was developed with Trident femto Western HRP Substrate.



For full product information, images and publications, please visit our [website](https://www.genetex.com).