



# SZABO SCANDIC

Part of Europa Biosite

## Produktinformation



Forschungsprodukte & Biochemikalien



Zellkultur & Verbrauchsmaterial



Diagnostik & molekulare Diagnostik



Laborgeräte & Service

Weitere Information auf den folgenden Seiten!  
See the following pages for more information!



### Lieferung & Zahlungsart

siehe unsere [Liefer- und Versandbedingungen](#)

### Zuschläge

- Mindermengenzuschlag
- Trockeneiszuschlag
- Gefahrgutzuschlag
- Expressversand

### SZABO-SCANDIC HandelsgmbH

Quellenstraße 110, A-1100 Wien

T. +43(0)1 489 3961-0

F. +43(0)1 489 3961-7

[mail@szabo-scandic.com](mailto:mail@szabo-scandic.com)

[www.szabo-scandic.com](http://www.szabo-scandic.com)

[linkedin.com/company/szaboscandic](https://www.linkedin.com/company/szaboscandic) 

## SARS-CoV-2 (COVID-19) Spike S1 antibody [HL1]

Cat No. GTX635656

<b>Host</b>	Rabbit
<b>Clonality</b>	Monoclonal
<b>Isotype</b>	IgG
<b>Application</b>	WB, ICC/IF, ELISA, Sandwich ELISA
<b>Reactivity</b>	SARS Coronavirus 2

Reference ( 1 )

Package

100 µl, 25 µl

## APPLICATION

## Application Note

\*Optimal dilutions/concentrations should be determined by the researcher.

Suggested dilution	Dilution
WB	1:1000-1:10000
ICC/IF	1:100-1:1000
ELISA	Assay dependent
Sandwich ELISA	Assay dependent

**Note : Capture : GTX632604, Detection: GTX635656**

Not tested in other applications.

## Product Note

This antibody detects SARS-CoV-2 Spike protein, but does not cross-react with SARS-CoV or MERS-CoV spike proteins based on our internal testing.

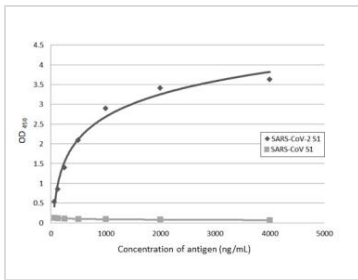
## PROPERTIES

<b>Form</b>	Liquid
<b>Buffer</b>	PBS
<b>Storage</b>	Store as concentrated solution. Centrifuge briefly prior to opening vial. For short-term storage (1-2 weeks), store at 4°C. For long-term storage, aliquot and store at -20°C or below. Avoid multiple freeze-thaw cycles.
<b>Concentration</b>	1.08 mg/ml (Please refer to the vial label for the specific concentration.)
<b>Immunogen</b>	Carrier-protein conjugated synthetic peptide encompassing a sequence within the N-terminal region of SARS-CoV-2 (COVID-19) spike (SARS-CoV-2 (strain Wuhan-Hu-1)). The exact sequence is proprietary.
<b>Purification</b>	Affinity purified by protein A.
<b>Conjugation</b>	Unconjugated
<b>Note</b>	For laboratory use only. Not for any clinical, therapeutic, or diagnostic use in humans or animals. Not for animal or human consumption.

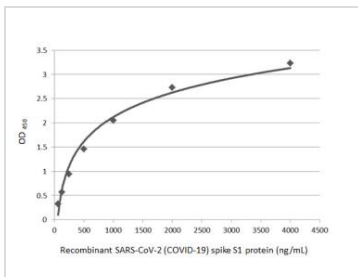


For full product information, images and publications, please visit our [website](#).

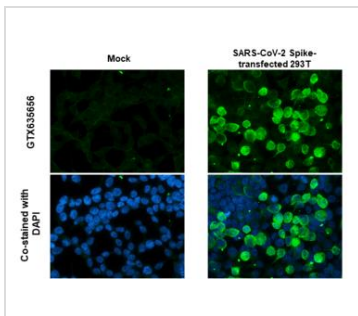
Date 2021 / 11 / 15 Page 1 of 2

**DATA IMAGES**

**GTx635656 ELISA Image**

Indirect ELISA analysis performed by coating plate with recombinant SARS-CoV-2 (COVID-19) spike S1 subunit protein or recombinant SARS-CoV spike S1 subunit protein (62.5–4000 ng/mL). Coated protein probed with SARS-CoV-2 (COVID-19) Spike S1 antibody [HL1] (GTx635656) (1 µg/mL). Rabbit IgG antibody (HRP) (GTx213110-01) (1:10000) detected bound primary antibody.


**GTx635656 ELISA Image**

Indirect ELISA analysis was performed by coating plate with 50 µL of recombinant SARS-CoV-2 (COVID-19) spike S1 subunit protein at concentrations ranging from 0.0625 µg/mL to 4 µg/mL. The coated protein is detected with (GTx635656) at 1 µg/mL. Rabbit IgG antibody (HRP) (GTx213110-01) was diluted at 1:10000 and used to detect the primary antibody.

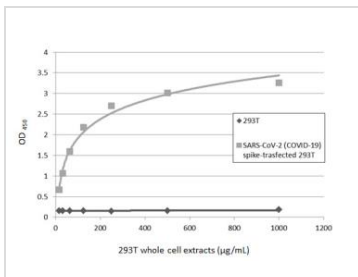

**GTx635656 ICC/IF Image**

SARS-CoV-2 (COVID-19) spike antibody [HL1] detects SARS-CoV-2 (COVID-19) spike protein by immunofluorescent analysis.

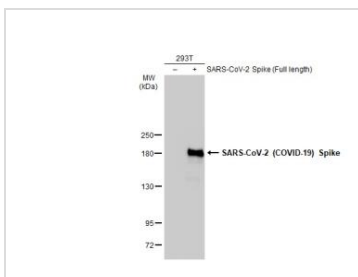
Sample: Mock and SARS-CoV-2 Spike-transfected 293T cells were fixed in 4% paraformaldehyde at RT for 15 min.

Green: SARS-CoV-2 (COVID-19) spike stained by SARS-CoV-2 (COVID-19) spike antibody [HL1] (GTx635656) diluted at 1:1000.

Blue: Fluoroshield with DAPI (GTx30920).


**GTx635656 ELISA Image**

Sandwich ELISA detection of non-transfected and SARS-CoV-2 spike (full length) transfected 293T whole cell extracts (GTx535664) using GTx632604 as capture antibody at concentration of 5 µg/mL and GTx635656 as detection antibody at concentration of 1 µg/mL. Rabbit IgG antibody (HRP) (GTx213110-01) was diluted at 1:10000 and used to detect the primary antibody.


**GTx635656 WB Image**

Non-transfected (–) and transfected (+) 293T whole cell extracts (30 µg) were separated by 5% SDS-PAGE, and the membrane was blotted with SARS-CoV-2 (COVID-19) Spike S1 antibody [HL1] (GTx635656) diluted at 1:5000. The HRP-conjugated anti-rabbit IgG antibody (GTx213110-01) was used to detect the primary antibody.



For full product information, images and publications, please visit our [website](https://www.genetex.com).