



SZABO SCANDIC

Part of Europa Biosite

Produktinformation



Forschungsprodukte & Biochemikalien



Zellkultur & Verbrauchsmaterial



Diagnostik & molekulare Diagnostik



Laborgeräte & Service

Weitere Information auf den folgenden Seiten!
See the following pages for more information!



Lieferung & Zahlungsart

siehe unsere [Liefer- und Versandbedingungen](#)

Zuschläge

- Mindermengenzuschlag
- Trockeneiszuschlag
- Gefahrgutzuschlag
- Expressversand

SZABO-SCANDIC HandelsgmbH

Quellenstraße 110, A-1100 Wien

T. +43(0)1 489 3961-0

F. +43(0)1 489 3961-7

mail@szabo-scandic.com

www.szabo-scandic.com

[linkedin.com/company/szaboscandic](https://www.linkedin.com/company/szaboscandic) 

SARS-CoV-2 (COVID-19) nucleocapsid antibody [HL249]

Cat No. GTX635678

Host	Rabbit
Clonality	Monoclonal
Isotype	IgG
Application	WB, ICC/IF, ELISA, Sandwich ELISA, IHC-P (cell pellet)
Reactivity	SARS Coronavirus, SARS Coronavirus 2

Reference (1)
 Package
 100 µl, 25 µl

APPLICATION

Application Note

*Optimal dilutions/concentrations should be determined by the researcher.

Suggested dilution	Dilution
WB	1:5000-1:20000
ICC/IF	1:100-1:1000
ELISA	Assay dependent
Sandwich ELISA	Assay dependent
IHC-P (cell pellet)	Assay dependent

Note : Capture : GTX635685/GTX635679/GTX635680/GTX635689, Detection: GTX635678. Please notice that GTX635678 needs to be conjugated to HRP to function as the detection antibody when paired with GTX635685/GTX635679/GTX635680/GTX635689. Please contact us for custom HRP-conjugated antibody.

Not tested in other applications.

Product Note

This antibody detects both SARS-CoV nucleocapsid and SARS-CoV-2 nucleocapsid proteins. Our internal testing indicates no cross-reactivity with MERS-CoV nucleocapsid protein.

PROPERTIES

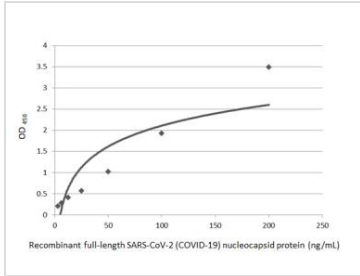
Form	Liquid
Buffer	PBS
Storage	Store as concentrated solution. Centrifuge briefly prior to opening vial. For short-term storage (1-2 weeks), store at 4°C. For long-term storage, aliquot and store at -20°C or below. Avoid multiple freeze-thaw cycles.
Concentration	1 mg/ml (Please refer to the vial label for the specific concentration.)
Immunogen	Full length SARS-CoV-2 (COVID-19) nucleocapsid Recombinant protein. (SARS-CoV-2 (strain Wuhan-Hu-1))
Purification	Affinity purified by protein A.
Conjugation	Unconjugated



For full product information, images and publications, please visit our [website](#).

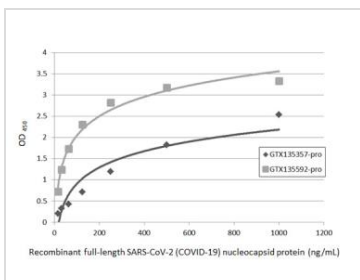
Note For laboratory use only. Not for any clinical, therapeutic, or diagnostic use in humans or animals. Not for animal or human consumption.

DATA IMAGES



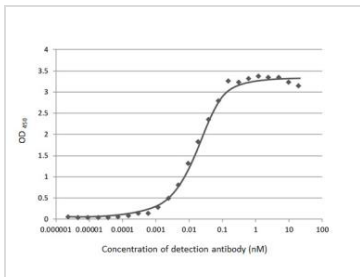
GTX635678 ELISA Image

Sandwich ELISA detection of recombinant full-length SARS-CoV-2 (COVID-19) nucleocapsid protein, His tag protein (GTX135592-pro) using SARS-CoV-2 (COVID-19) nucleocapsid antibody [HL5410] (GTX635685) as capture antibody at concentration of 5 µg/mL and HRP-conjugated SARS-CoV-2 (COVID-19) nucleocapsid antibody [HL249] (GTX635678) as detection antibody at concentration of 1 µg/mL.



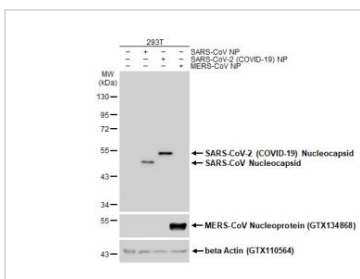
GTX635678 ELISA Image

Indirect ELISA analysis was performed by coating plate with 50 µL of recombinant full-length SARS-CoV-2 (COVID-19) nucleocapsid protein (GTX135357-pro) and (GTX135592-pro) at concentrations ranging from 0.015 µg/mL to 1 µg/mL. The coated protein is detected with SARS-CoV-2 (COVID-19) nucleocapsid antibody [HL249] (GTX635678) at 1 µg/mL. Rabbit IgG antibody (HRP) (GTX213110-01) was diluted at 1:10000 and used to detect the primary antibody.



GTX635678 ELISA Image

Indirect ELISA analysis performed by coating plate with recombinant full-length SARS-CoV-2 (COVID-19) nucleocapsid protein (GTX135592-pro) (50 ng). Coated protein probed with SARS-CoV-2 (COVID-19) nucleocapsid antibody [HL249] (GTX635678) ($2.4 \times 10^{-6} \sim 20$ nM). Rabbit IgG antibody (HRP) (GTX213110-01) (1:10000) detected bound primary antibody.
EC50 : 0.016 nM



GTX635678 WB Image

Non-transfected (-) and transfected (+) 293T whole cell extracts (30 µg) were separated by 10% SDS-PAGE, and the membrane was blotted with SARS-CoV-2 (COVID-19) nucleocapsid antibody [HL249] (GTX635678) diluted at 1:5000. The HRP-conjugated anti-rabbit IgG antibody (GTX213110-01) was used to detect the primary antibody.



For full product information, images and publications, please visit our [website](#).