



SZABO SCANDIC

Part of Europa Biosite

Produktinformation



Forschungsprodukte & Biochemikalien



Zellkultur & Verbrauchsmaterial



Diagnostik & molekulare Diagnostik



Laborgeräte & Service

Weitere Information auf den folgenden Seiten!
See the following pages for more information!



Lieferung & Zahlungsart

siehe unsere [Liefer- und Versandbedingungen](#)

Zuschläge

- Mindermengenzuschlag
- Trockeneiszuschlag
- Gefahrgutzuschlag
- Expressversand

SZABO-SCANDIC HandelsgmbH

Quellenstraße 110, A-1100 Wien

T. +43(0)1 489 3961-0

F. +43(0)1 489 3961-7

mail@szabo-scandic.com

www.szabo-scandic.com

[linkedin.com/company/szaboscandic](https://www.linkedin.com/company/szaboscandic)



Influenza B virus Nucleoprotein antibody [HL1068]

Cat No. GTX636099

Host	Rabbit
Clonality	Monoclonal
Isotype	IgG
Application	WB, ICC/IF, ELISA, Lateral Flow, Sandwich ELISA
Reactivity	Influenza B virus

★★★★★ Review (1)

Package
100 µl, 25 µl

APPLICATION

Application Note

*Optimal dilutions/concentrations should be determined by the researcher.

Suggested dilution	Dilution
WB	1:1000-1:10000
ICC/IF	Assay dependent
ELISA	Assay dependent
Lateral Flow	Assay dependent
Sandwich ELISA	Assay dependent

Note : Capture : GTX636194 / GTX636100, Detection : GTX636099 or Capture : GTX636099, Detection : GTX636194 / GTX636100. Please notice that GTX636099 needs to be conjugated to HRP to function as the detection antibody when paired with GTX636194 / GTX636100. Please contact us for custom HRP-conjugated antibody.

Not tested in other applications.

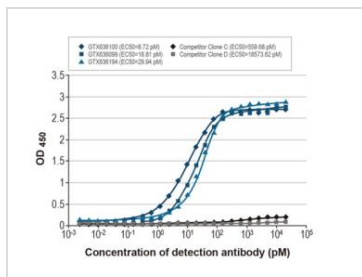
PROPERTIES

Form	Liquid
Buffer	PBS
Storage	Store as concentrated solution. Centrifuge briefly prior to opening vial. For short-term storage (1-2 weeks), store at 4°C. For long-term storage, aliquot and store at -20°C or below. Avoid multiple freeze-thaw cycles.
Concentration	1 mg/ml (Please refer to the vial label for the specific concentration.)
Immunogen	Recombinant protein encompassing a sequence within the N-terminus region of Influenza B virus Nucleoprotein (B/Taiwan/753/2005). The exact sequence is proprietary.
Purification	Affinity purified by Protein A.
Conjugation	Unconjugated
Note	For laboratory use only. Not for any clinical, therapeutic, or diagnostic use in humans or animals. Not for animal or human consumption.

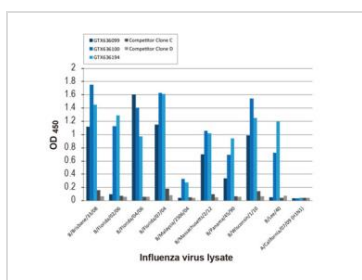


For full product information, images and publications, please visit our [website](#).

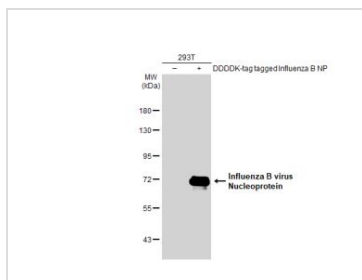
Date 2021 / 09 / 07 Page 1 of 2

DATA IMAGES

GTx636099 ELISA Image

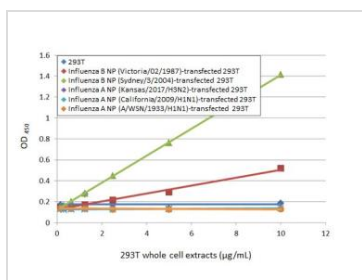
Indirect ELISA analysis was performed by coating a plate with recombinant influenza B virus nucleoprotein protein (B/Sydney/3/2004), DDDDK Tag (GTx135867-pro) (50 ng), and probing with the specified influenza B virus nucleoprotein antibodies at the indicated concentrations. Goat anti-rabbit IgG antibody (HRP) (GTx213110-01) (1:10000) or goat anti-mouse IgG antibody (HRP) (GTx213111-01) (1:10000) were used to detect the bound primary antibodies.


GTx636099 ELISA Image

Indirect ELISA analysis was performed by coating a plate with viral lysates (1 µg) derived from different strains of influenza B virus or influenza A virus and probing with the specified influenza B virus nucleoprotein antibodies (1 µg/ml). Goat anti-rabbit IgG antibody (HRP) (GTx213110-01) (1:10000) or goat anti-mouse IgG antibody (HRP) (GTx213111-01) (1:10000) were used to detect the bound primary antibodies.

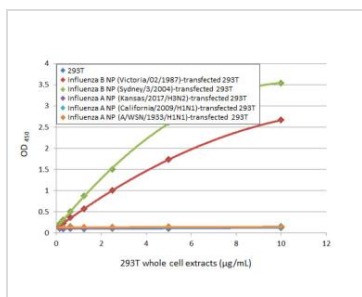

GTx636099 WB Image

Non-transfected (–) and transfected (+) 293T whole cell extracts (30 µg) were separated by 7.5% SDS-PAGE, and the membrane was blotted with Influenza B virus Nucleoprotein antibody [HL1068] (GTx636099) diluted at 1:5000. The HRP-conjugated anti-rabbit IgG antibody (GTx213110-01) was used to detect the primary antibody.


GTx636099 ELISA Image

Sandwich ELISA detection of non-transfected and transfected 293T whole cell extracts using Influenza B virus Nucleoprotein antibody [HL1073] (GTx636194) as capture antibody at concentration of 5 µg/mL and HRP-conjugated Influenza B virus Nucleoprotein antibody [HL1068] (GTx636099) as detection antibody at concentration of 1 µg/mL.

Please notice that GTX636099 needs to be conjugated to HRP to function as the detection antibody when paired with GTX636194. Please contact us for custom HRP-conjugated antibody.


GTx636099 ELISA Image

Sandwich ELISA detection of non-transfected and transfected 293T whole cell extracts using Influenza B virus Nucleoprotein antibody [HL1068] (GTx636099) as capture antibody at concentration of 5 µg/mL and HRP-conjugated Influenza B virus Nucleoprotein antibody [HL1069] (GTx636100) as detection antibody at concentration of 1 µg/mL.

Please notice that GTX636100 needs to be conjugated to HRP to function as the detection antibody when paired with GTX636099. Please contact us for custom HRP-conjugated antibody.



For full product information, images and publications, please visit our [website](http://www.genetex.com).