



# SZABO SCANDIC

Part of Europa Biosite

## Produktinformation



Forschungsprodukte & Biochemikalien



Zellkultur & Verbrauchsmaterial



Diagnostik & molekulare Diagnostik



Laborgeräte & Service

Weitere Information auf den folgenden Seiten!  
See the following pages for more information!



### Lieferung & Zahlungsart

siehe unsere [Liefer- und Versandbedingungen](#)

### Zuschläge

- Mindermengenzuschlag
- Trockeneiszuschlag
- Gefahrgutzuschlag
- Expressversand

### SZABO-SCANDIC HandelsgmbH

Quellenstraße 110, A-1100 Wien

T. +43(0)1 489 3961-0

F. +43(0)1 489 3961-7

[mail@szabo-scandic.com](mailto:mail@szabo-scandic.com)

[www.szabo-scandic.com](http://www.szabo-scandic.com)

[linkedin.com/company/szaboscandic](https://www.linkedin.com/company/szaboscandic) 

## Influenza B virus Nucleoprotein antibody [HL1073]

Cat No. GTX636194

Host	Rabbit
Clonality	Monoclonal
Isotype	IgG
Application	WB, ICC/IF, ELISA, Lateral Flow, Sandwich ELISA
Reactivity	Influenza B virus

★★★★★ Review ( 1 )

Package  
100 µl, 25 µl

## APPLICATION

## Application Note

\*Optimal dilutions/concentrations should be determined by the researcher.

Suggested dilution	Dilution
WB	Assay dependent
ICC/IF	Assay dependent
ELISA	Assay dependent
Lateral Flow	Assay dependent
Sandwich ELISA	Assay dependent

**Note : Capture : GTX636194, Detection : GTX636099 / GTX636100 or Capture : GTX636099 / GTX636100, Detection : GTX636194. Please notice GTX636194 needs to be conjugated to HRP to function as the detection antibody when paired with GTX636099 / GTX636100.. Please contact us for custom HRP-conjugated antibody.**

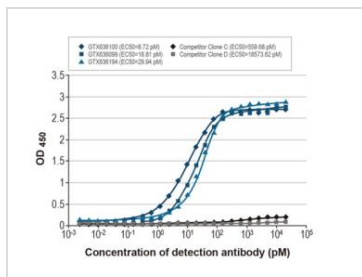
Not tested in other applications.

## PROPERTIES

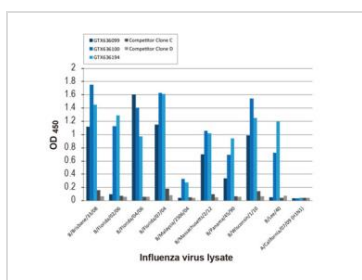
Form	Liquid
Buffer	PBS
Storage	Store as concentrated solution. Centrifuge briefly prior to opening vial. For short-term storage (1-2 weeks), store at 4°C. For long-term storage, aliquot and store at -20°C or below. Avoid multiple freeze-thaw cycles.
Concentration	1 mg/ml (Please refer to the vial label for the specific concentration.)
Immunogen	Recombinant protein encompassing a sequence within the C-terminus region of Influenza B virus Nucleoprotein (B/Taiwan/753/2005). The exact sequence is proprietary.
Purification	Affinity purified by Protein A.
Conjugation	Unconjugated
Note	For laboratory use only. Not for any clinical, therapeutic, or diagnostic use in humans or animals. Not for animal or human consumption.

For full product information, images and publications, please visit our [website](#).

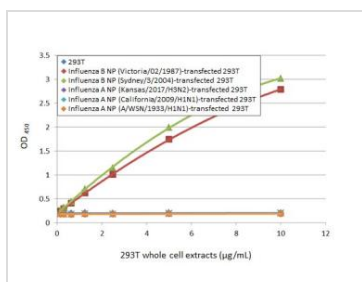
Date 2021 / 09 / 07 Page 1 of 2

**DATA IMAGES**

**GTx636194 ELISA Image**

Indirect ELISA analysis was performed by coating a plate with recombinant influenza B virus nucleoprotein protein (B/Sydney/3/2004), DDDDK Tag (GTx135867-pro) (50 ng), and probing with the specified influenza B virus nucleoprotein antibodies at the indicated concentrations. Goat anti-rabbit IgG antibody (HRP) (GTx213110-01) (1:10000) or goat anti-mouse IgG antibody (HRP) (GTx213111-01) (1:10000) were used to detect the bound primary antibodies.

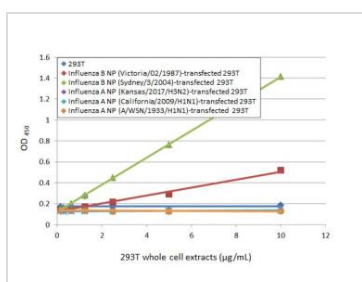

**GTx636194 ELISA Image**

Indirect ELISA analysis was performed by coating a plate with viral lysates (1 µg) derived from different strains of influenza B virus or influenza A virus and probing with the specified influenza B virus nucleoprotein antibodies (1 µg/ml). Goat anti-rabbit IgG antibody (HRP) (GTx213110-01) (1:10000) or goat anti-mouse IgG antibody (HRP) (GTx213111-01) (1:10000) were used to detect the bound primary antibodies.


**GTx636194 ELISA Image**

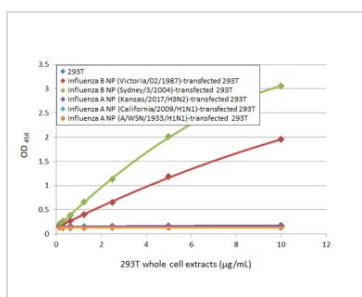
Sandwich ELISA detection of non-transfected and transfected 293T whole cell extracts using Influenza B virus Nucleoprotein antibody [HL1073] (GTx636194) as capture antibody at concentration of 5 µg/mL and HRP-conjugated Influenza B virus Nucleoprotein antibody [HL1069] (GTx636100) as detection antibody at concentration of 1 µg/mL.

Please notice that GTx636100 needs to be conjugated to HRP to function as the detection antibody when paired with GTx636194. Please contact us for custom HRP-conjugated antibody.


**GTx636194 ELISA Image**

Sandwich ELISA detection of non-transfected and transfected 293T whole cell extracts using Influenza B virus Nucleoprotein antibody [HL1073] (GTx636194) as capture antibody at concentration of 5 µg/mL and HRP-conjugated Influenza B virus Nucleoprotein antibody [HL1068] (GTx636099) as detection antibody at concentration of 1 µg/mL.

Please notice that GTx636099 needs to be conjugated to HRP to function as the detection antibody when paired with GTx636194. Please contact us for custom HRP-conjugated antibody.


**GTx636194 ELISA Image**

Sandwich ELISA detection of non-transfected and transfected 293T whole cell extracts using Influenza B virus Nucleoprotein antibody [HL1068] (GTx636099) as capture antibody at concentration of 5 µg/mL and HRP-conjugated Influenza B virus Nucleoprotein antibody [HL1073] (GTx636194) as detection antibody at concentration of 1 µg/mL.

Please notice that GTx636194 needs to be conjugated to HRP to function as the detection antibody when paired with GTx636099. Please contact us for custom HRP-conjugated antibody.



For full product information, images and publications, please visit our [website](https://www.genetex.com).