



SZABO SCANDIC

Part of Europa Biosite

Produktinformation



Forschungsprodukte & Biochemikalien



Zellkultur & Verbrauchsmaterial



Diagnostik & molekulare Diagnostik



Laborgeräte & Service

Weitere Information auf den folgenden Seiten!
See the following pages for more information!



Lieferung & Zahlungsart

siehe unsere [Liefer- und Versandbedingungen](#)

Zuschläge

- Mindermengenzuschlag
- Trockeneiszuschlag
- Gefahrgutzuschlag
- Expressversand

SZABO-SCANDIC HandelsgmbH

Quellenstraße 110, A-1100 Wien

T. +43(0)1 489 3961-0

F. +43(0)1 489 3961-7

mail@szabo-scandic.com

www.szabo-scandic.com

[linkedin.com/company/szaboscandic](https://www.linkedin.com/company/szaboscandic) 

CDK2 (phospho Tyr15) antibody [HL1474]

Cat. No. GTX636948

Host	Rabbit
Clonality	Monoclonal
Isotype	IgG
Application	WB, ELISA
Reactivity	Human, Mouse, Rat, Drosophila

Package
100 µl, 25 µl

APPLICATION

Application Note

*Optimal dilutions/concentrations should be determined by the researcher.

Suggested dilution	Recommended dilution
WB	1:500-1:3000
ELISA	Assay dependent

Not tested in other applications.

Calculated MW 34 kDa. ([Note](#))**Product Note** Based on internal testing, this antibody may cross react with CDK1 (CDC2), CDK3, and CDK5 proteins when phosphorylated at tyrosine 15.

PROPERTIES

Form	Liquid
Buffer	PBS
Preservative	No preservative
Storage	Store as concentrated solution. Centrifuge briefly prior to opening vial. For short-term storage (1-2 weeks), store at 4°C. For long-term storage, aliquot and store at -20°C or below. Avoid multiple freeze-thaw cycles.
Concentration	1 mg/ml (Please refer to the vial label for the specific concentration.)
Immunogen	Carrier-protein conjugated synthetic peptide corresponding to residues around human CDK2 (phospho Tyr15). The exact sequence is proprietary.
Purification	Affinity purified by Protein A.
Conjugation	Unconjugated

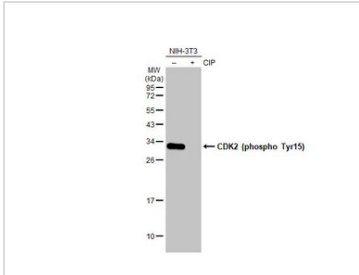


For full product information, images and publications, please visit our [website](#).

For laboratory research use only. Not for any clinical, therapeutic, or diagnostic use in humans or animals. Not for animal or human consumption.

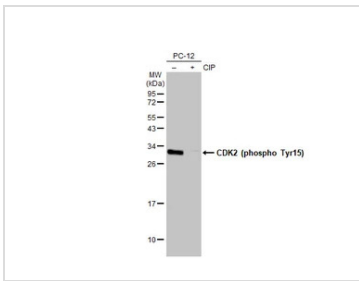
Note
Purchasers shall not, and agree not to enable third parties to, analyze, copy, reverse engineer or otherwise attempt to determine the structure or sequence of the product.

DATA IMAGES



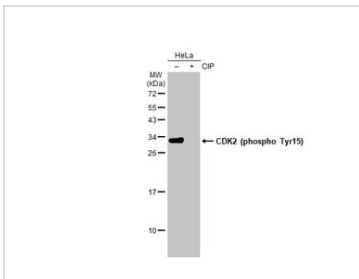
GTX636948 WB Image

Untreated (-) and treated (+) NIH-3T3 whole cell extracts (30 µg) were separated by 12% SDS-PAGE, and the membrane was blotted with CDK2 (phospho Tyr15) antibody [HL1474] (GTX636948) diluted at 1:1000. The HRP-conjugated anti-rabbit IgG antibody (GTX213110-01) was used to detect the primary antibody.



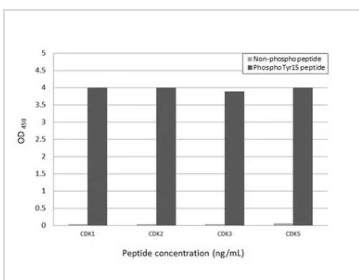
GTX636948 WB Image

Untreated (-) and treated (+) PC-12 whole cell extracts (30 µg) were separated by 12% SDS-PAGE, and the membrane was blotted with CDK2 (phospho Tyr15) antibody [HL1474] (GTX636948) diluted at 1:1000. The HRP-conjugated anti-rabbit IgG antibody (GTX213110-01) was used to detect the primary antibody.



GTX636948 WB Image

Untreated (-) and treated (+) HeLa whole cell extracts (30 µg) were separated by 12% SDS-PAGE, and the membrane was blotted with CDK2 (phospho Tyr15) antibody [HL1474] (GTX636948) diluted at 1:1000. The HRP-conjugated anti-rabbit IgG antibody (GTX213110-01) was used to detect the primary antibody.



GTX636948 ELISA Image

Specificity test was performed by coating the plate with CDK1/2/3/5 peptide and CDK1/2/3/5 (phospho Tyr15) peptide (15.63 ng/mL). Coated peptides were probed with CDK2 (phospho Tyr15) antibody [HL1474] (GTX636948) (1 µg/mL). Goat anti-rabbit IgG antibody (HRP) (GTX213110-01) (1:10000) was used to detect the bound primary antibody.



For full product information, images and publications, please visit our [website](#).