



# SZABO SCANDIC

Part of Europa Biosite

## Produktinformation



Forschungsprodukte & Biochemikalien



Zellkultur & Verbrauchsmaterial



Diagnostik & molekulare Diagnostik



Laborgeräte & Service

Weitere Information auf den folgenden Seiten!  
See the following pages for more information!



### Lieferung & Zahlungsart

siehe unsere [Liefer- und Versandbedingungen](#)

### Zuschläge

- Mindermengenzuschlag
- Trockeneiszuschlag
- Gefahrgutzuschlag
- Expressversand

### SZABO-SCANDIC HandelsgmbH

Quellenstraße 110, A-1100 Wien

T. +43(0)1 489 3961-0

F. +43(0)1 489 3961-7

[mail@szabo-scandic.com](mailto:mail@szabo-scandic.com)

[www.szabo-scandic.com](http://www.szabo-scandic.com)

[linkedin.com/company/szaboscandic](https://www.linkedin.com/company/szaboscandic) 

# PKC gamma antibody [HL2226]

**Cat. No. GTX638271**

<b>Host</b>	Rabbit
<b>Clonality</b>	Monoclonal
<b>Isotype</b>	IgG
<b>Application</b>	WB, IHC-P
<b>Reactivity</b>	Human, Mouse, Rat

**Package**  
100 µl, 25 µl

## APPLICATION

### Application Note

\*Optimal dilutions/concentrations should be determined by the researcher.

Suggested dilution	Recommended dilution
WB	1:500-1:3000
IHC-P	Assay dependent

Not tested in other applications.

**Calculated MW** 78 kDa. ( [Note](#) )

### Product Note

This antibody is specific for human PKC gamma protein, and it does not cross react with human PKC alpha, PKC beta 1, PKC beta 2, PKC delta, PKC epsilon, PKC zeta, PKC eta, and PKC theta protein.

## PROPERTIES

<b>Form</b>	Liquid
<b>Buffer</b>	PBS
<b>Preservative</b>	No preservative
<b>Storage</b>	Store as concentrated solution. Centrifuge briefly prior to opening vial. For short-term storage (1-2 weeks), store at 4°C. For long-term storage, aliquot and store at -20°C or below. Avoid multiple freeze-thaw cycles.
<b>Concentration</b>	1 mg/ml (Please refer to the vial label for the specific concentration.)
<b>Immunogen</b>	Recombinant fragment of human PKC gamma.
<b>Purification</b>	Affinity purified by Protein A.
<b>Conjugation</b>	Unconjugated

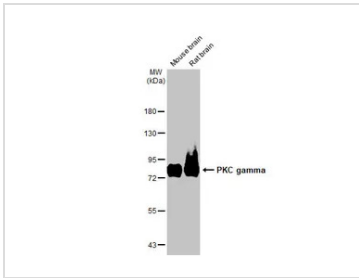
### Note

For laboratory research use only. Not for any clinical, therapeutic, or diagnostic use in humans or animals. Not for animal or human consumption.

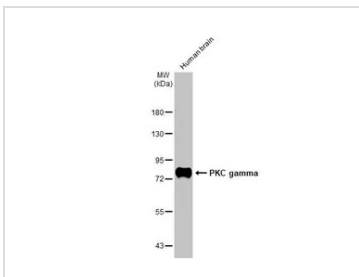
Purchasers shall not, and agree not to enable third parties to, analyze, copy, reverse engineer or otherwise attempt to determine the structure or sequence of the product.



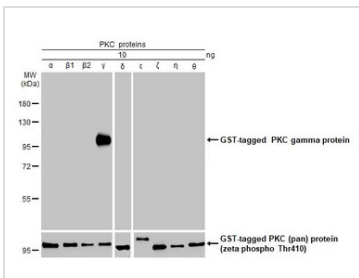
For full product information, images and publications, please visit our [website](#).

**DATA IMAGES**

**GTX638271 WB Image**

Various tissue extracts (50 µg) were separated by 7.5% SDS-PAGE, and the membrane was blotted with PKC gamma antibody [HL2226] (GTX638271) diluted at 1:5000. The HRP-conjugated anti-rabbit IgG antibody (GTX213110-01) was used to detect the primary antibody.


**GTX638271 WB Image**

Human brain (5 µg) was separated by 7.5% SDS-PAGE, and the membrane was blotted with PKC gamma antibody [HL2226] (GTX638271) diluted at 1:1000. The HRP-conjugated anti-rabbit IgG antibody (GTX213110-01) was used to detect the primary antibody.


**GTX638271 WB Image**

PKC proteins (10 ng) were separated by 7.5% SDS-PAGE, and the membrane was blotted with PKC gamma antibody [HL2226] (GTX638271) diluted at 1:1000. The HRP-conjugated anti-rabbit IgG antibody (GTX213110-01) was used to detect the primary antibody.

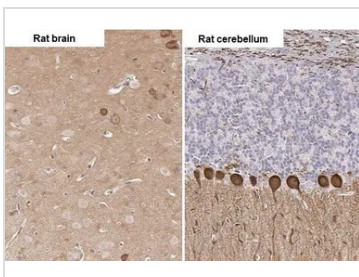

**GTX638271 IHC-P Image**

PKC gamma antibody [HL2226] detects PKC gamma protein at cell membrane and cytoplasm by immunohistochemical analysis.

Sample: Paraffin-embedded mouse brain.

PKC gamma stained by PKC gamma antibody [HL2226] (GTX638271) diluted at 1:100.

Antigen Retrieval: Citrate buffer, pH 6.0, 15 min


**GTX638271 IHC-P Image**

PKC gamma antibody [HL2226] detects PKC gamma protein by immunohistochemical analysis.

Sample: Paraffin-embedded rat tissues.

PKC gamma stained by PKC gamma antibody [HL2226] (GTX638271) diluted at 1:100.

Antigen Retrieval: Citrate buffer, pH 6.0, 15 min



For full product information, images and publications, please visit our [website](https://www.genetex.com).