



SZABO SCANDIC

Part of Europa Biosite

Produktinformation



Forschungsprodukte & Biochemikalien



Zellkultur & Verbrauchsmaterial



Diagnostik & molekulare Diagnostik



Laborgeräte & Service

Weitere Information auf den folgenden Seiten!
See the following pages for more information!



Lieferung & Zahlungsart

siehe unsere [Liefer- und Versandbedingungen](#)

Zuschläge

- Mindermengenzuschlag
- Trockeneiszuschlag
- Gefahrgutzuschlag
- Expressversand

SZABO-SCANDIC Handels GmbH

Quellenstraße 110, A-1100 Wien

T. +43(0)1 489 3961-0

F. +43(0)1 489 3961-7

mail@szabo-scandic.com

www.szabo-scandic.com

[linkedin.com/company/szaboscandic](https://www.linkedin.com/company/szaboscandic) 

TET3 antibody [HL2463]

Cat. No. GTX638781

Host	Rabbit
Clonality	Monoclonal
Isotype	IgG
Application	WB, IHC-P
Reactivity	Human, Mouse, Rat

Package
100 µl, 25 µl

APPLICATION

Application Note

*Optimal dilutions/concentrations should be determined by the researcher.

Suggested dilution	Recommended dilution
WB	1:500-1:3000
IHC-P	Assay dependent

Not tested in other applications.

Calculated MW 179 kDa. ([Note](#))

Product Note This antibody is specific for human TET3 protein, and it does not cross-react with human TET1 and TET2 proteins.

PROPERTIES

Form	Liquid
Buffer	PBS
Preservative	No preservative
Storage	Store as concentrated solution. Centrifuge briefly prior to opening vial. For short-term storage (1-2 weeks), store at 4°C. For long-term storage, aliquot and store at -20°C or below. Avoid multiple freeze-thaw cycles.
Concentration	1 mg/ml (Please refer to the vial label for the specific concentration.)
Immunogen	Recombinant fragment of human TET3.
Purification	Affinity purified by Protein A.
Conjugation	Unconjugated

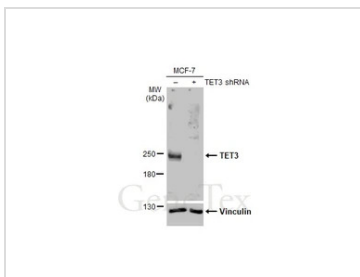
Note

For laboratory research use only. Not for any clinical, therapeutic, or diagnostic use in humans or animals. Not for animal or human consumption.

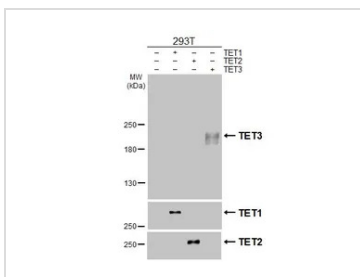
Purchasers shall not, and agree not to enable third parties to, analyze, copy, reverse engineer or otherwise attempt to determine the structure or sequence of the product.



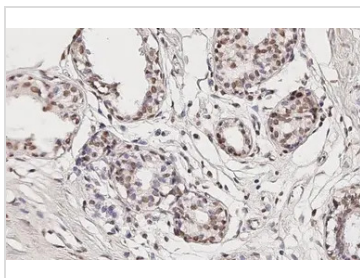
For full product information, images and publications, please visit our [website](#).

DATA IMAGES

GTX638781 WB Image

Non-transfected (–) and transfected (+) MCF-7 whole cell extracts (30 µg) were separated by 5% SDS-PAGE, and the membrane was blotted with TET3 antibody [HL2463] (GTX638781) diluted at 1:1000. The HRP-conjugated anti-rabbit IgG antibody (GTX213110-01) was used to detect the primary antibody, and the signal was developed with Trident ECL plus-Enhanced.


GTX638781 WB Image

Non-transfected (–) and transfected (+) 293T whole cell extracts (30 µg) were separated by 5% SDS-PAGE, and the membrane was blotted with TET3 antibody [HL2463] (GTX638781) diluted at 1:5000. The HRP-conjugated anti-rabbit IgG antibody (GTX213110-01) was used to detect the primary antibody.

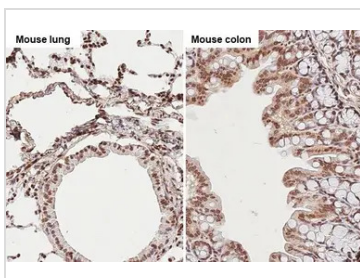

GTX638781 IHC-P Image

TET3 antibody [HL2463] detects TET3 protein by immunohistochemical analysis.

Sample: Paraffin-embedded human breast carcinoma.

TET3 stained by TET3 antibody [HL2463] (GTX638781) diluted at 1:100.

Antigen Retrieval: Citrate buffer, pH 6.0, 15 min

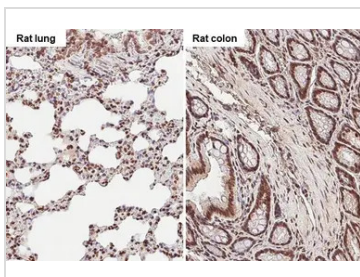

GTX638781 IHC-P Image

TET3 antibody [HL2463] detects TET3 protein by immunohistochemical analysis.

Sample: Paraffin-embedded mouse tissues.

TET3 stained by TET3 antibody [HL2463] (GTX638781) diluted at 1:100.

Antigen Retrieval: Citrate buffer, pH 6.0, 15 min


GTX638781 IHC-P Image

TET3 antibody [HL2463] detects TET3 protein by immunohistochemical analysis.

Sample: Paraffin-embedded rat tissues.

TET3 stained by TET3 antibody [HL2463] (GTX638781) diluted at 1:100.

Antigen Retrieval: Citrate buffer, pH 6.0, 15 min



For full product information, images and publications, please visit our [website](https://www.genetex.com).