



SZABO SCANDIC

Part of Europa Biosite

Produktinformation



Forschungsprodukte & Biochemikalien



Zellkultur & Verbrauchsmaterial



Diagnostik & molekulare Diagnostik



Laborgeräte & Service

Weitere Information auf den folgenden Seiten!
See the following pages for more information!



Lieferung & Zahlungsart

siehe unsere [Liefer- und Versandbedingungen](#)

Zuschläge

- Mindermengenzuschlag
- Trockeneiszuschlag
- Gefahrgutzuschlag
- Expressversand

SZABO-SCANDIC HandelsgmbH

Quellenstraße 110, A-1100 Wien

T. +43(0)1 489 3961-0

F. +43(0)1 489 3961-7

mail@szabo-scandic.com

www.szabo-scandic.com

[linkedin.com/company/szaboscandic](https://www.linkedin.com/company/szaboscandic) 

LIM1 antibody [HL2561]

Cat. No. GTX638938

Host	Rabbit
Clonality	Monoclonal
Isotype	IgG
Application	IHC-P
Reactivity	Mouse

Package
100 µl, 25 µl

APPLICATION

Application Note

*Optimal dilutions/concentrations should be determined by the researcher.

Suggested dilution	Recommended dilution
--------------------	----------------------

IHC-P	1:100-1:1000
-------	--------------

Not tested in other applications.

Calculated MW	45 kDa. (Note)
---------------	----------------------------------

PROPERTIES

Form	Liquid
------	--------

Buffer	PBS
--------	-----

Preservative	No preservative
--------------	-----------------

Storage	Store as concentrated solution. Centrifuge briefly prior to opening vial. For short-term storage (1-2 weeks), store at 4°C. For long-term storage, aliquot and store at -20°C or below. Avoid multiple freeze-thaw cycles.
---------	--

Concentration	1 mg/ml (Please refer to the vial label for the specific concentration.)
---------------	--

Immunogen	Recombinant antibody of human LIM1
-----------	------------------------------------

Purification	Affinity purified by Protein A.
--------------	---------------------------------

Conjugation	Unconjugated
-------------	--------------

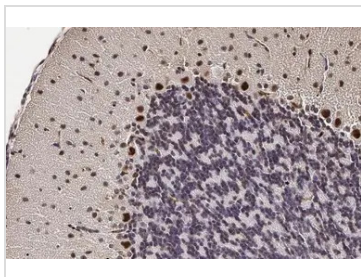
For laboratory research use only. Not for any clinical, therapeutic, or diagnostic use in humans or animals. Not for animal or human consumption.

Note
Purchasers shall not, and agree not to enable third parties to, analyze, copy, reverse engineer or otherwise attempt to determine the structure or sequence of the product.



For full product information, images and publications, please visit our [website](#).

DATA IMAGES

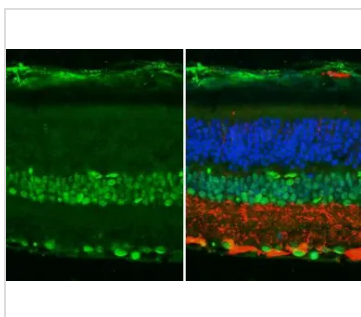
**GTX638938 IHC-P Image**

LIM1 antibody [HL2561] detects LIM1 protein at nucleus by immunohistochemical analysis.

Sample: Paraffin-embedded mouse cerebellum.

LIM1 stained by LIM1 antibody [HL2561] (GTX638938) diluted at 1:100.

Antigen Retrieval: Citrate buffer, pH 6.0, 15 min

**GTX638938 IHC-P Image**

LIM1 antibody [HL2561] detects LIM1 protein by immunohistochemical analysis.

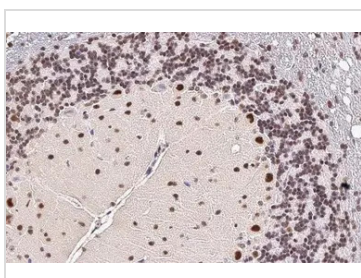
Sample: Paraffin-embedded mouse eye.

LIM1 stained by LIM1 antibody [HL2561] (GTX638938) diluted at 1:100.

Red: beta Tubulin 3/ Tuj1, a Cytoskeleton marker, stained by beta Tubulin 3/ Tuj1 antibody [GT11710] (GTX631836) diluted at 1:500.

Blue: Fluoroshield with DAPI (GTX30920).

Antigen Retrieval: Citrate buffer, pH 6.0, 15 min

**GTX638938 IHC-P Image**

LIM1 antibody [HL2561] detects LIM1 protein at nucleus by immunohistochemical analysis.

Sample: Paraffin-embedded mouse cerebellum.

LIM1 stained by LIM1 antibody [HL2561] (GTX638938) diluted at 1:100.

Antigen Retrieval: Citrate buffer, pH 6.0, 15 min



For full product information, images and publications, please visit our [website](#).