



# SZABO SCANDIC

Part of Europa Biosite

## Produktinformation



Forschungsprodukte & Biochemikalien



Zellkultur & Verbrauchsmaterial



Diagnostik & molekulare Diagnostik



Laborgeräte & Service

Weitere Information auf den folgenden Seiten!  
See the following pages for more information!



### Lieferung & Zahlungsart

siehe unsere [Liefer- und Versandbedingungen](#)

### Zuschläge

- Mindermengenzuschlag
- Trockeneiszuschlag
- Gefahrgutzuschlag
- Expressversand

### SZABO-SCANDIC HandelsgmbH

Quellenstraße 110, A-1100 Wien

T. +43(0)1 489 3961-0

F. +43(0)1 489 3961-7

[mail@szabo-scandic.com](mailto:mail@szabo-scandic.com)

[www.szabo-scandic.com](http://www.szabo-scandic.com)

[linkedin.com/company/szaboscandic](https://www.linkedin.com/company/szaboscandic) 

# Fibrillarin + FBLL1 antibody [HL2588]

**Cat. No. GTX639039**

<b>Host</b>	Rabbit
<b>Clonality</b>	Monoclonal
<b>Isotype</b>	IgG
<b>Application</b>	WB, ICC/IF, IHC-P
<b>Reactivity</b>	Human, Mouse, Rat

**Package**  
100 µl, 25 µl

## APPLICATION

### Application Note

\*Optimal dilutions/concentrations should be determined by the researcher.

Suggested dilution	Recommended dilution
WB	Assay dependent
ICC/IF	1:100-1:1000
IHC-P	Assay dependent

Not tested in other applications.

**Observed MW** 35-38 kDa.

## PROPERTIES

<b>Form</b>	Liquid
<b>Buffer</b>	PBS
<b>Preservative</b>	No Preservative
<b>Storage</b>	Store as concentrated solution. Centrifuge briefly prior to opening vial. For short-term storage (1-2 weeks), store at 4°C. For long-term storage, aliquot and store at -20°C or below. Avoid multiple freeze-thaw cycles.
<b>Concentration</b>	1 mg/ml (Please refer to the vial label for the specific concentration.)
<b>Immunogen</b>	Recombinant fragment of human fibrillarin.
<b>Purification</b>	Affinity purified by Protein A.
<b>Conjugation</b>	Unconjugated

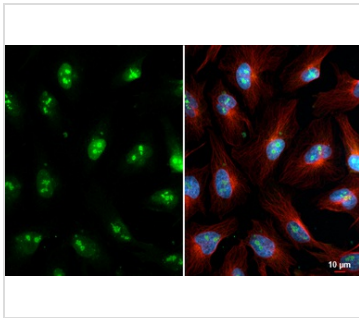
### Note

For laboratory research use only. Not for any clinical, therapeutic, or diagnostic use in humans or animals. Not for animal or human consumption.

Purchasers shall not, and agree not to enable third parties to, analyze, copy, reverse engineer or otherwise attempt to determine the structure or sequence of the product.



For full product information, images and publications, please visit our [website](#).

**DATA IMAGES**

**GTX639039 ICC/IF Image**

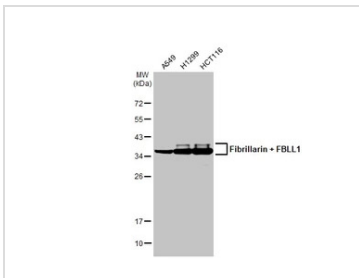
Fibrillarin + FBLL1 antibody [HL2588] detects Fibrillarin + FBLL1 protein at nuclear envelope and nucleus by immunofluorescent analysis.

Sample: HeLa cells were fixed in 4% paraformaldehyde at RT for 15 min.

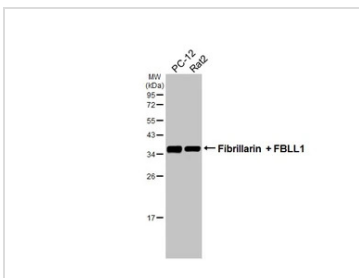
Green: Fibrillarin + FBLL1 stained by Fibrillarin + FBLL1 antibody [HL2588] (GTX639039) diluted at 1:500.

Red: alpha Tubulin, a cytoskeleton marker, stained by alpha Tubulin antibody [GT114] (GTX628802) diluted at 1:1000.

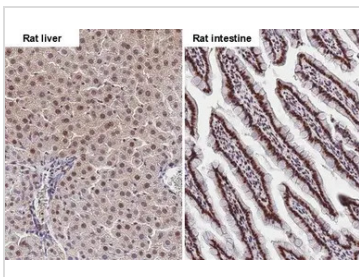
Blue: Fluoroshield with DAPI (GTX30920).


**GTX639039 WB Image**

Various whole cell extracts (30 μg) were separated by 12% SDS-PAGE, and the membrane was blotted with Fibrillarin + FBLL1 antibody [HL2588] (GTX639039) diluted at 1:1000. The HRP-conjugated anti-rabbit IgG antibody (GTX213110-01) was used to detect the primary antibody.


**GTX639039 WB Image**

Various whole cell extracts (30 μg) were separated by 12% SDS-PAGE, and the membrane was blotted with Fibrillarin + FBLL1 antibody [HL2588] (GTX639039) diluted at 1:1000. The HRP-conjugated anti-rabbit IgG antibody (GTX213110-01) was used to detect the primary antibody.

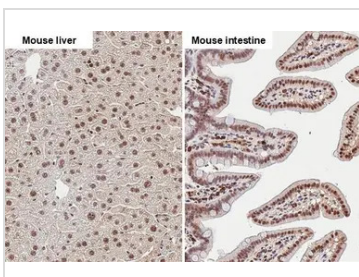

**GTX639039 IHC-P Image**

Fibrillarin + FBLL1 antibody [HL2588] detects Fibrillarin + FBLL1 protein by immunohistochemical analysis.

Sample: Paraffin-embedded rat tissues.

Fibrillarin + FBLL1 stained by Fibrillarin + FBLL1 antibody [HL2588] (GTX639039) diluted at 1:100.

Antigen Retrieval: Citrate buffer, pH 6.0, 15 min


**GTX639039 IHC-P Image**

Fibrillarin + FBLL1 antibody [HL2588] detects Fibrillarin + FBLL1 protein by immunohistochemical analysis.

Sample: Paraffin-embedded mouse tissues.

Fibrillarin + FBLL1 stained by Fibrillarin + FBLL1 antibody [HL2588] (GTX639039) diluted at 1:100.

Antigen Retrieval: Citrate buffer, pH 6.0, 15 min



For full product information, images and publications, please visit our [website](https://www.genetex.com).