



SZABO SCANDIC

Part of Europa Biosite

Produktinformation



Forschungsprodukte & Biochemikalien



Zellkultur & Verbrauchsmaterial



Diagnostik & molekulare Diagnostik



Laborgeräte & Service

Weitere Information auf den folgenden Seiten!
See the following pages for more information!



Lieferung & Zahlungsart

siehe unsere [Liefer- und Versandbedingungen](#)

Zuschläge

- Mindermengenzuschlag
- Trockeneiszuschlag
- Gefahrgutzuschlag
- Expressversand

SZABO-SCANDIC HandelsgmbH

Quellenstraße 110, A-1100 Wien

T. +43(0)1 489 3961-0

F. +43(0)1 489 3961-7

mail@szabo-scandic.com

www.szabo-scandic.com

[linkedin.com/company/szaboscandic](https://www.linkedin.com/company/szaboscandic) 

HAP40 antibody [HL2642]

Cat. No. GTX639098

| | |
|-------------|-------------------|
| Host | Rabbit |
| Clonality | Monoclonal |
| Isotype | IgG |
| Application | WB |
| Reactivity | Human, Mouse, Rat |

Package
100 µl, 25 µl

APPLICATION

Application Note

*Optimal dilutions/concentrations should be determined by the researcher.

| Suggested dilution | Recommended dilution |
|--------------------|----------------------|
|--------------------|----------------------|

| | |
|----|--------------|
| WB | 1:500-1:3000 |
|----|--------------|

Not tested in other applications.

| | |
|---------------|----------------------------------|
| Calculated MW | 39 kDa. (Note) |
|---------------|----------------------------------|

PROPERTIES

| | |
|------|--------|
| Form | Liquid |
|------|--------|

| | |
|--------|-----|
| Buffer | PBS |
|--------|-----|

| | |
|--------------|-----------------|
| Preservative | No preservative |
|--------------|-----------------|

| | |
|---------|--|
| Storage | Store as concentrated solution. Centrifuge briefly prior to opening vial. For short-term storage (1-2 weeks), store at 4°C. For long-term storage, aliquot and store at -20°C or below. Avoid multiple freeze-thaw cycles. |
|---------|--|

| | |
|---------------|--|
| Concentration | 1 mg/ml (Please refer to the vial label for the specific concentration.) |
|---------------|--|

| | |
|-----------|----------------------------------|
| Immunogen | Synthetic peptide of human HAP40 |
|-----------|----------------------------------|

| | |
|--------------|---------------------------------|
| Purification | Affinity purified by Protein A. |
|--------------|---------------------------------|

| | |
|-------------|--------------|
| Conjugation | Unconjugated |
|-------------|--------------|

Note

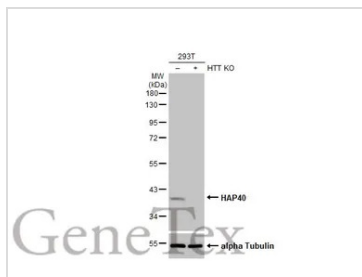
For laboratory research use only. Not for any clinical, therapeutic, or diagnostic use in humans or animals. Not for animal or human consumption.

Purchasers shall not, and agree not to enable third parties to, analyze, copy, reverse engineer or otherwise attempt to determine the structure or sequence of the product.

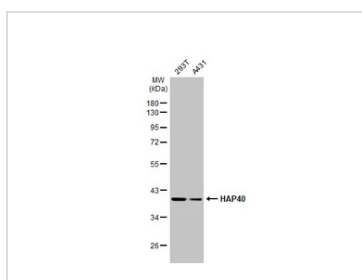


For full product information, images and publications, please visit our [website](#).

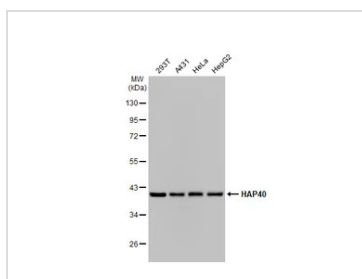
DATA IMAGES

**GTX639098 WB Image**

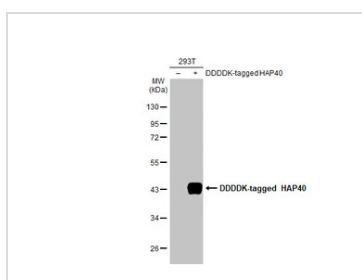
Wild-type (WT) and HTT knockout (KO) 293T cell extracts (30 μ g) were separated by 10% SDS-PAGE, and the membrane was blotted with HAP40 antibody [HL2642] (GTX639098) diluted at 1:1000. The HRP-conjugated anti-rabbit IgG antibody (GTX213110-01) was used to detect the primary antibody. The observed expression level is based on the publication: PMID: 35853002

**GTX639098 WB Image**

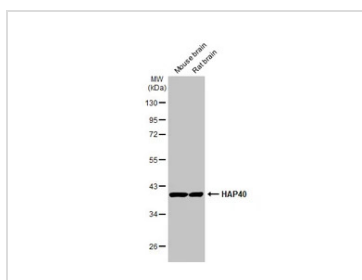
Various whole cell extracts (30 μ g) were separated by 10% SDS-PAGE, and the membrane was blotted with HAP40 antibody [HL2642] (GTX639098) diluted at 1:1000. The HRP-conjugated anti-rabbit IgG antibody (GTX213110-01) was used to detect the primary antibody.

**GTX639098 WB Image**

Various whole cell extracts (30 μ g) were separated by 10% SDS-PAGE, and the membrane was blotted with HAP40 antibody [HL2642] (GTX639098) diluted at 1:1000. The HRP-conjugated anti-rabbit IgG antibody (GTX213110-01) was used to detect the primary antibody.

**GTX639098 WB Image**

Non-transfected (-) and transfected (+) 293T whole cell extracts (30 μ g) were separated by 10% SDS-PAGE, and the membrane was blotted with HAP40 antibody [HL2642] (GTX639098) diluted at 1:5000. The HRP-conjugated anti-rabbit IgG antibody (GTX213110-01) was used to detect the primary antibody.

**GTX639098 WB Image**

Various tissue extracts (50 μ g) were separated by 10% SDS-PAGE, and the membrane was blotted with HAP40 antibody [HL2642] (GTX639098) diluted at 1:1000. The HRP-conjugated anti-rabbit IgG antibody (GTX213110-01) was used to detect the primary antibody.



For full product information, images and publications, please visit our [website](#).