



SZABO SCANDIC

Part of Europa Biosite

Produktinformation



Forschungsprodukte & Biochemikalien



Zellkultur & Verbrauchsmaterial



Diagnostik & molekulare Diagnostik



Laborgeräte & Service

Weitere Information auf den folgenden Seiten!
See the following pages for more information!



Lieferung & Zahlungsart

siehe unsere [Liefer- und Versandbedingungen](#)

Zuschläge

- Mindermengenzuschlag
- Trockeneiszuschlag
- Gefahrgutzuschlag
- Expressversand

SZABO-SCANDIC HandelsgmbH

Quellenstraße 110, A-1100 Wien

T. +43(0)1 489 3961-0

F. +43(0)1 489 3961-7

mail@szabo-scandic.com

www.szabo-scandic.com

[linkedin.com/company/szaboscandic](https://www.linkedin.com/company/szaboscandic) 

p38 MAPK (phospho Thr180 / Tyr182) antibody [HL2742]

Cat. No. GTX639571

Host	Rabbit
Clonality	Monoclonal
Isotype	IgG
Applications	WB
Reactivity	Human, Mouse

Package
100 µl, 25 µl

Applications

Application Note

*Optimal dilutions/concentrations should be determined by the researcher.

Suggested dilution	Recommended dilution
WB	Assay dependent

Not tested in other applications.

Observed MW (kDa) 41 kDa.

Product Note

This antibody recognizes p38 MAPK when dually phosphorylated at Tyr180 and Tyr182. It may show minor cross-reactivity with p38 MAPK phosphorylated at Tyr182 but does not cross-react with p38 MAPK phosphorylated at Tyr180.

Properties

Form	Liquid
Buffer	PBS
Preservative	No preservatives
Storage	Store as concentrated solution. Centrifuge briefly prior to opening vial. For short-term storage (1-2 weeks), store at 4°C. For long-term storage, aliquot and store at -20°C or below. Avoid multiple freeze-thaw cycles.
Concentration	1 mg/ml (Please refer to the vial label for the specific concentration.)
Immunogen	Carrier-protein conjugated synthetic peptide surrounding phospho Thr180/Tyr182 of human p38 MAPK. The exact sequence is proprietary.
Purification	Affinity purified by Protein A.
Conjugation	Unconjugated

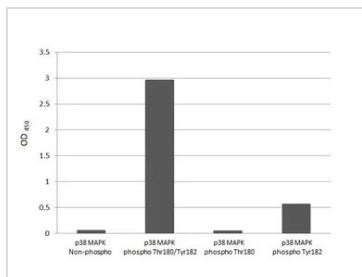
Note

For laboratory research use only. Not for any clinical, therapeutic, or diagnostic use in humans or animals. Not for animal or human consumption.

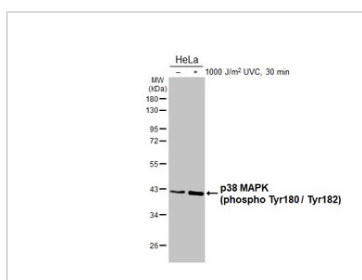
Purchasers shall not, and agree not to enable third parties to, analyze, copy, reverse engineer or otherwise attempt to determine the structure or sequence of the product.



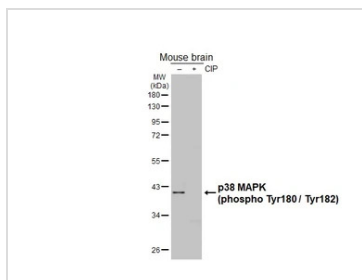
For full product information, images and publications, please visit our [website](#).

DATA IMAGES

GTX639571 Image

Indirect ELISA analysis was performed by coating the plate with recombinant (MAPK14 peptide, MAPK14 (phospho Thr180) peptide, MAPK14 (phospho Tyr182) peptide, and MAPK14 (phospho Thr180/Tyr182) peptide) (15.63 ng/mL). Coated protein was probed with p38 MAPK (phospho Thr180 / Tyr182) antibody [HL2742] (GTX639571) (1 µg/mL). Goat anti-rabbit IgG antibody (HRP) (GTX213110-01) (1:10000) was used to detect the bound primary antibody.


GTX639571 WB Image

Untreated (-) and treated (+) HeLa whole cell extract (30 µg) were separated by 10% SDS-PAGE, and the membrane was blotted with p38 MAPK (phospho Thr180 / Tyr182) antibody [HL2742] (GTX639571) diluted at 1:1000. The HRP-conjugated anti-rabbit IgG antibody (GTX213110-01) was used to detect the primary antibody.


GTX639571 WB Image

Untreated (-) and treated (+) mouse tissue extract (30 µg) were separated by 10% SDS-PAGE, and the membrane was blotted with p38 MAPK (phospho Thr180 / Tyr182) antibody [HL2742] (GTX639571) diluted at 1:1000. The HRP-conjugated anti-rabbit IgG antibody (GTX213110-01) was used to detect the primary antibody, and the signal was developed with Trident ECL plus-Enhanced.



For full product information, images and publications, please visit our [website](https://www.genetex.com).