



# SZABO SCANDIC

Part of Europa Biosite

## Produktinformation



Forschungsprodukte & Biochemikalien



Zellkultur & Verbrauchsmaterial



Diagnostik & molekulare Diagnostik



Laborgeräte & Service

Weitere Information auf den folgenden Seiten!  
See the following pages for more information!



### Lieferung & Zahlungsart

siehe unsere [Liefer- und Versandbedingungen](#)

### Zuschläge

- Mindermengenzuschlag
- Trockeneiszuschlag
- Gefahrgutzuschlag
- Expressversand

### SZABO-SCANDIC HandelsgmbH

Quellenstraße 110, A-1100 Wien

T. +43(0)1 489 3961-0

F. +43(0)1 489 3961-7

[mail@szabo-scandic.com](mailto:mail@szabo-scandic.com)

[www.szabo-scandic.com](http://www.szabo-scandic.com)

[linkedin.com/company/szaboscandic](https://www.linkedin.com/company/szaboscandic) 

# C3a Receptor antibody [HL2831]

**Cat. No. GTX640102**

|                    |                   |
|--------------------|-------------------|
| <b>Host</b>        | Rabbit            |
| <b>Clonality</b>   | Monoclonal        |
| <b>Isotype</b>     | IgG               |
| <b>Application</b> | WB, ICC/IF, IHC-P |
| <b>Reactivity</b>  | Human             |

**Package**  
100 µl, 25 µl

## APPLICATION

### Application Note

\*Optimal dilutions/concentrations should be determined by the researcher.

| Suggested dilution | Recommended dilution |
|--------------------|----------------------|
| WB                 | 1:1000-1:10000       |
| ICC/IF             | 1:100-1:1000         |
| IHC-P              | Assay dependent      |

Not tested in other applications.

**Product Note** This antibody was raised against human C3a Receptor Extracellular domain.

## PROPERTIES

|                      |  |
|----------------------|--|
| <b>Form</b>          | Liquid   |
| <b>Buffer</b>        | PBS  |
| <b>Preservative</b>  | No preservative  |
| <b>Storage</b>       | Store as concentrated solution. Centrifuge briefly prior to opening vial. For short-term storage (1-2 weeks), store at 4°C. For long-term storage, aliquot and store at -20°C or below. Avoid multiple freeze-thaw cycles. |
| <b>Concentration</b> | 1 mg/ml (Please refer to the vial label for the specific concentration.)   |
| <b>Immunogen</b>     | Recombinant protein encompassing a sequence within the Extracellular domain of human C3a Receptor. The exact sequence is proprietary.  |
| <b>Purification</b>  | Affinity purified by Protein A.  |
| <b>Conjugation</b>   | Unconjugated   |

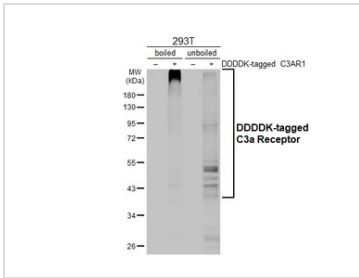
**Note** For laboratory research use only. Not for any clinical, therapeutic, or diagnostic use in humans or animals. Not for animal or human consumption.

Purchasers shall not, and agree not to enable third parties to, analyze, copy, reverse engineer or otherwise attempt to determine the structure or sequence of the product.



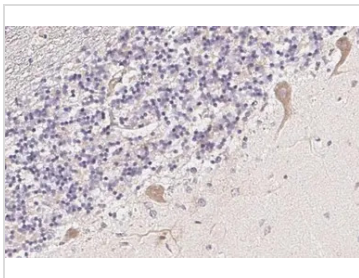
For full product information, images and publications, please visit our [website](#).

## DATA IMAGES



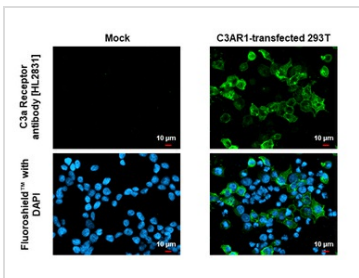
### GTX640102 WB Image

Non-transfected (–) and transfected (+) boiled and unboiled 293T whole cell extracts (30 µg) were separated by 10% SDS-PAGE, and the membrane was blotted with C3a Receptor antibody [HL2831] (GTX640102) diluted at 1:5000. The HRP-conjugated anti-rabbit IgG antibody (GTX213110-01) was used to detect the primary antibody.



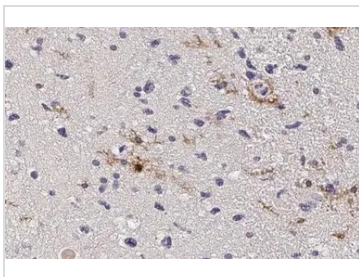
### GTX640102 IHC-P Image

C3a Receptor antibody [HL2831] detects C3a Receptor protein by immunohistochemical analysis.  
Sample: Paraffin-embedded human cerebellum.  
C3a Receptor stained by C3a Receptor antibody [HL2831] (GTX640102) diluted at 1:100.  
Antigen Retrieval: Citrate buffer, pH 6.0, 15 min



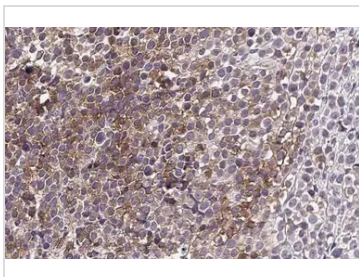
### GTX640102 ICC/IF Image

C3a Receptor antibody [HL2831] detects C3a Receptor protein by immunofluorescent analysis.  
Sample: Mock and transfected 293T cells were fixed in ice-cold MeOH for 5 min.  
Green: C3a Receptor stained by C3a Receptor antibody [HL2831] (GTX640102) diluted at 1:500.  
Blue: Fluoroshield with DAPI (GTX30920).



### GTX640102 IHC-P Image

C3a Receptor antibody [HL2831] detects C3a Receptor protein at cell membrane and cytoplasm by immunohistochemical analysis.  
Sample: Paraffin-embedded human glioblastoma.  
C3a Receptor stained by C3a Receptor antibody [HL2831] (GTX640102) diluted at 1:100.  
Antigen Retrieval: Citrate buffer, pH 6.0, 15 min



### GTX640102 IHC-P Image

C3a Receptor antibody [HL2831] detects C3a Receptor protein at cell membrane and cytoplasm by immunohistochemical analysis.  
Sample: Paraffin-embedded HL-60 xenograft.  
C3a Receptor stained by C3a Receptor antibody [HL2831] (GTX640102) diluted at 1:100.  
Antigen Retrieval: Citrate buffer, pH 6.0, 15 min



For full product information, images and publications, please visit our [website](https://www.genetex.com).