



SZABO SCANDIC

Part of Europa Biosite

Produktinformation



Forschungsprodukte & Biochemikalien



Zellkultur & Verbrauchsmaterial



Diagnostik & molekulare Diagnostik



Laborgeräte & Service

Weitere Information auf den folgenden Seiten!
See the following pages for more information!



Lieferung & Zahlungsart

siehe unsere [Liefer- und Versandbedingungen](#)

Zuschläge

- Mindermengenzuschlag
- Trockeneiszuschlag
- Gefahrgutzuschlag
- Expressversand

SZABO-SCANDIC HandelsgmbH

Quellenstraße 110, A-1100 Wien

T. +43(0)1 489 3961-0

F. +43(0)1 489 3961-7

mail@szabo-scandic.com

www.szabo-scandic.com

[linkedin.com/company/szaboscandic](https://www.linkedin.com/company/szaboscandic) 

CCR10 antibody [HL2853]

Cat. No. GTX640124

Host	Rabbit
Clonality	Monoclonal
Isotype	IgG
Applications	ICC/IF, Functional Assay
Reactivity	Human

Package
100 µl, 25 µl

Applications

Application Note

*Optimal dilutions/concentrations should be determined by the researcher.

Suggested dilution	Recommended dilution
ICC/IF	1:100-1:1000
Functional Assay	Assay dependent

Not tested in other applications.

Product Note

This antibody is specific for human CCR10 protein and does not cross react with human CCR1, CCR2, CCR4, CCR5, CCR7, and CCR9 protein.
This antibody was raised against human CCR10 Extracellular domain.

Properties

Form	Liquid
Buffer	PBS
Preservative	No preservatives
Storage	Store as concentrated solution. Centrifuge briefly prior to opening vial. For short-term storage (1-2 weeks), store at 4°C. For long-term storage, aliquot and store at -20°C or below. Avoid multiple freeze-thaw cycles.
Concentration	1 mg/ml (Please refer to the vial label for the specific concentration.)
Immunogen	Synthetic peptide encompassing a sequence within the Extracellular domain of human CCR10. The exact sequence is proprietary.
Purification	Affinity purified by Protein A.
Conjugation	Unconjugated

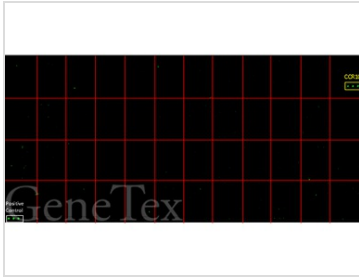
Note

For laboratory research use only. Not for any clinical, therapeutic, or diagnostic use in humans or animals. Not for animal or human consumption.

Purchasers shall not, and agree not to enable third parties to, analyze, copy, reverse engineer or otherwise attempt to determine the structure or sequence of the product.



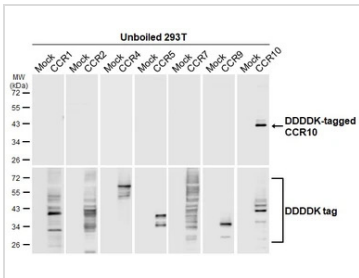
For full product information, images and publications, please visit our [website](#).

DATA IMAGES

GTx640124 Functional Assay Image

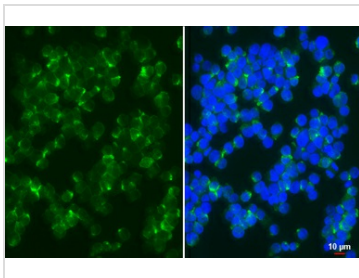
CCR10 antibody [HL2853] (GTx640124) specifically detects CCR10 protein on a VirDTM-GPCR array (CDI Labs, Baltimore, MD). Array was probed with antibody using a 1:1000 dilution.

Yellow: CCR10

White: Positive control


GTx640124 Image

Unboiled non-transfected (–) and transfected (+) 293T whole cell extracts (30 µg) were separated by 10% SDS-PAGE, and the membrane was blotted with CCR10 antibody [HL2853] (GTx640124) diluted at 1:5000. The HRP-conjugated anti-rabbit IgG antibody (GTx213110-01) was used to detect the primary antibody.


GTx640124 ICC/IF Image

CCR10 antibody [HL2853] detects CCR10 protein by immunofluorescent analysis.

Sample: NCI-H929 cells were fixed in 4% paraformaldehyde at RT for 15 min.

Green: CCR10 stained by CCR10 antibody [HL2853] (GTx640124) diluted at 1:100.

Blue: Fluoroshield with DAPI (GTx30920).



For full product information, images and publications, please visit our [website](https://www.genetex.com).