



SZABO SCANDIC

Part of Europa Biosite

Produktinformation



Forschungsprodukte & Biochemikalien



Zellkultur & Verbrauchsmaterial



Diagnostik & molekulare Diagnostik



Laborgeräte & Service

Weitere Information auf den folgenden Seiten!
See the following pages for more information!



Lieferung & Zahlungsart

siehe unsere [Liefer- und Versandbedingungen](#)

Zuschläge

- Mindermengenzuschlag
- Trockeneiszuschlag
- Gefahrgutzuschlag
- Expressversand

SZABO-SCANDIC HandelsgmbH

Quellenstraße 110, A-1100 Wien

T. +43(0)1 489 3961-0

F. +43(0)1 489 3961-7

mail@szabo-scandic.com

www.szabo-scandic.com

[linkedin.com/company/szaboscandic](https://www.linkedin.com/company/szaboscandic)



Myosin Light Chain 2 (MLC-2v) (phospho Ser15) antibody [HL2891]

Cat. No. GTX640170

Host	Rabbit
Clonality	Monoclonal
Isotype	IgG
Application	WB, ICC/IF
Reactivity	Human, Mouse

Package

100 µl, 25 µl

APPLICATION

Application Note

*Optimal dilutions/concentrations should be determined by the researcher.

Suggested dilution	Recommended dilution
WB	Assay dependent
ICC/IF	Assay dependent

Not tested in other applications.

Observed MW 19 kDa.

PROPERTIES

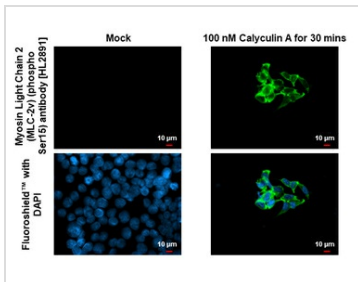
Form	Liquid
Buffer	PBS
Preservative	No preservative
Storage	Store as concentrated solution. Centrifuge briefly prior to opening vial. For short-term storage (1-2 weeks), store at 4°C. For long-term storage, aliquot and store at -20°C or below. Avoid multiple freeze-thaw cycles.
Concentration	1 mg/ml (Please refer to the vial label for the specific concentration.)
Immunogen	Carrier-protein conjugated synthetic peptide surrounding phospho Ser15 of human Myosin Light Chain 2 (MLC-2v). The exact sequence is proprietary.
Purification	Affinity purified by Protein A.
Conjugation	Unconjugated

Note

For laboratory research use only. Not for any clinical, therapeutic, or diagnostic use in humans or animals. Not for animal or human consumption.

Purchasers shall not, and agree not to enable third parties to, analyze, copy, reverse engineer or otherwise attempt to determine the structure or sequence of the product.

For full product information, images and publications, please visit our [website](#).

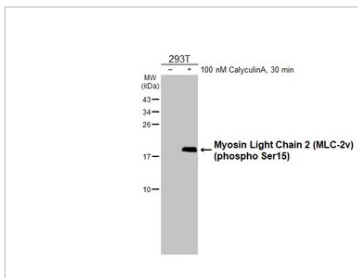
DATA IMAGES

GTx640170 ICC/IF Image

Myosin Light Chain 2 (MLC-2v) (phospho Ser15) antibody [HL2891] detects Myosin Light Chain 2 (MLC-2v) (phospho Ser15) protein at cytoplasm by immunofluorescent analysis.

Sample: Mock and treated 293T cells were fixed in ice-cold MeOH for 5 min.

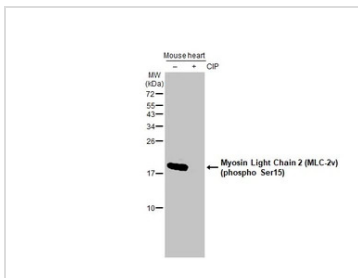
Green: Myosin Light Chain 2 (MLC-2v) (phospho Ser15) stained by Myosin Light Chain 2 (MLC-2v) (phospho Ser15) antibody [HL2891] (GTx640170) diluted at 1:500.

Blue: Fluoroshield with DAPI (GTx30920).


GTx640170 WB Image

Untreated (–) and treated (+) 293T whole cell extracts (30 μg) were separated by 15% SDS-PAGE, and the membrane was blotted with Myosin Light Chain 2 (MLC-2v) (phospho Ser15) antibody [HL2891]

(GTx640170) diluted at 1:1000. The HRP-conjugated anti-rabbit IgG antibody (GTx213110-01) was used to detect the primary antibody.


GTx640170 WB Image

Untreated (–) and treated (+) mouse tissue extract (50 μg) were separated by 15% SDS-PAGE, and the membrane was blotted with Myosin Light Chain 2 (MLC-2v) (phospho Ser15) antibody [HL2891]

(GTx640170) diluted at 1:1000. The HRP-conjugated anti-rabbit IgG antibody (GTx213110-01) was used to detect the primary antibody.



For full product information, images and publications, please visit our [website](https://www.genetex.com).