



SZABO SCANDIC

Part of Europa Biosite

Produktinformation



Forschungsprodukte & Biochemikalien



Zellkultur & Verbrauchsmaterial



Diagnostik & molekulare Diagnostik



Laborgeräte & Service

Weitere Information auf den folgenden Seiten!
See the following pages for more information!



Lieferung & Zahlungsart

siehe unsere [Liefer- und Versandbedingungen](#)

Zuschläge

- Mindermengenzuschlag
- Trockeneiszuschlag
- Gefahrgutzuschlag
- Expressversand

SZABO-SCANDIC HandelsgmbH

Quellenstraße 110, A-1100 Wien

T. +43(0)1 489 3961-0

F. +43(0)1 489 3961-7

mail@szabo-scandic.com

www.szabo-scandic.com

[linkedin.com/company/szaboscandic](https://www.linkedin.com/company/szaboscandic) 

Human metapneumovirus Nucleoprotein antibody [HL2921]

Cat. No. GTX640264

Host	Rabbit
Clonality	Monoclonal
Isotype	IgG
Application	WB, ICC/IF, Lateral Flow
Reactivity	Human metapneumovirus

Package

100 µl, 25 µl

APPLICATION

Application Note

*Optimal dilutions/concentrations should be determined by the researcher.

Suggested dilution	Recommended dilution
WB	1:1000-1:10000
ICC/IF	Assay dependent
Lateral Flow	Assay dependent

Note : Capture : GTX640262, Detection : GTX640264 / GTX640267, or Capture : GTX640264 / GTX640267, Detection : GTX640262

Not tested in other applications.

PROPERTIES

Form	Liquid
Buffer	PBS
Preservative	No preservative
Storage	Store as concentrated solution. Centrifuge briefly prior to opening vial. For short-term storage (1-2 weeks), store at 4°C. For long-term storage, aliquot and store at -20°C or below. Avoid multiple freeze-thaw cycles.
Concentration	2 mg/ml (Please refer to the vial label for the specific concentration.)
Immunogen	Full length Human metapneumovirus Nucleoprotein. (strain CAN97-83)
Purification	Affinity purified by Protein A.
Conjugation	Unconjugated

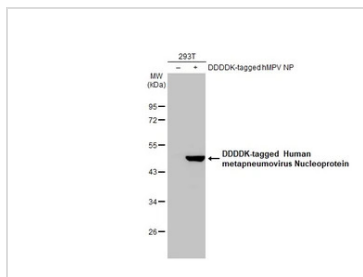
Note

For laboratory research use only. Not for any clinical, therapeutic, or diagnostic use in humans or animals. Not for animal or human consumption.

Purchasers shall not, and agree not to enable third parties to, analyze, copy, reverse engineer or otherwise attempt to determine the structure or sequence of the product.

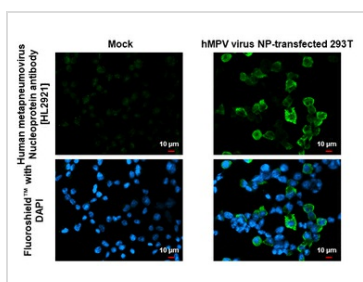
For full product information, images and publications, please visit our [website](#).

DATA IMAGES



GTX640264 WB Image

Non-transfected (-) and transfected (+) 293T whole cell extracts (30 µg) were separated by 10% SDS-PAGE, and the membrane was blotted with Human metapneumovirus Nucleoprotein antibody [HL2921] (GTX640264) diluted at 1:10000. The HRP-conjugated anti-rabbit IgG antibody (GTX213110-01) was used to detect the primary antibody.



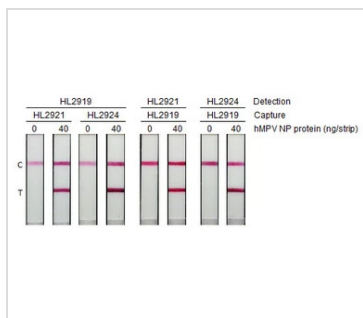
GTX640264 ICC/IF Image

Human metapneumovirus Nucleoprotein antibody [HL2921] detects Human metapneumovirus Nucleoprotein protein by immunofluorescent analysis.

Sample: Mock and transfected 293T cells were fixed in ice-cold MeOH for 5 min.

Green: Human metapneumovirus Nucleoprotein stained by Human metapneumovirus Nucleoprotein antibody [HL2921] (GTX640264) diluted at 1:500.

Blue: Fluoroshield with DAPI (GTX30920).



GTX640264 Lateral Flow Image

Detection of human metapneumovirus nucleoprotein by lateral flow assay using the indicated recombinant rabbit monoclonal antibodies.

HL2919 : Human metapneumovirus Nucleoprotein antibody [HL2919] (GTX640262)

HL2921 : Human metapneumovirus Nucleoprotein antibody [HL2921] (GTX640264)

HL2924 : Human metapneumovirus Nucleoprotein antibody [HL2924] (GTX640267)

Samples (40 ng) : Human Metapneumovirus Nucleoprotein, DDDDK tag (GTX139078-pro)



For full product information, images and publications, please visit our [website](#).