



SZABO SCANDIC

Part of Europa Biosite

Produktinformation



Forschungsprodukte & Biochemikalien



Zellkultur & Verbrauchsmaterial



Diagnostik & molekulare Diagnostik



Laborgeräte & Service

Weitere Information auf den folgenden Seiten!
See the following pages for more information!



Lieferung & Zahlungsart

siehe unsere [Liefer- und Versandbedingungen](#)

Zuschläge

- Mindermengenzuschlag
- Trockeneiszuschlag
- Gefahrgutzuschlag
- Expressversand

SZABO-SCANDIC Handels GmbH

Quellenstraße 110, A-1100 Wien

T. +43(0)1 489 3961-0

F. +43(0)1 489 3961-7

mail@szabo-scandic.com

www.szabo-scandic.com

[linkedin.com/company/szaboscandic](https://www.linkedin.com/company/szaboscandic) 

Respiratory Syncytial Virus M protein Antibody [HL3000]

Cat. No. GTX640410

Host	Rabbit
Clonality	Monoclonal
Isotype	IgG
Application	WB, ICC/IF
Reactivity	Respiratory syncytial virus

Package
100 µl, 25 µl

APPLICATION

Application Note

*Optimal dilutions/concentrations should be determined by the researcher.

Suggested dilution	Recommended dilution
WB	1:500-1:3000
ICC/IF	1:100-1:1000

Not tested in other applications.

PROPERTIES

Form	Liquid
Buffer	PBS
Preservative	No preservative
Storage	Store as concentrated solution. Centrifuge briefly prior to opening vial. For short-term storage (1-2 weeks), store at 4°C. For long-term storage, aliquot and store at -20°C or below. Avoid multiple freeze-thaw cycles.
Concentration	1 mg/ml (Please refer to the vial label for the specific concentration.)
Immunogen	Full length Respiratory Syncytial Virus M protein.
Purification	Affinity purified by Protein A.
Conjugation	Unconjugated

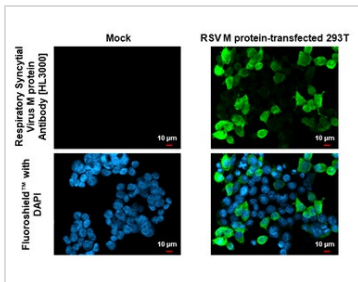
Note

For laboratory research use only. Not for any clinical, therapeutic, or diagnostic use in humans or animals. Not for animal or human consumption.

Purchasers shall not, and agree not to enable third parties to, analyze, copy, reverse engineer or otherwise attempt to determine the structure or sequence of the product.



For full product information, images and publications, please visit our [website](#).

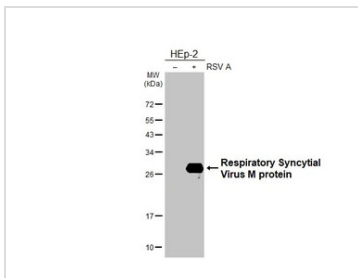
DATA IMAGES

GTX640410 ICC/IF Image

Respiratory Syncytial Virus M protein Antibody [HL3000] detects Respiratory Syncytial Virus M protein Antibody protein by immunofluorescent analysis.

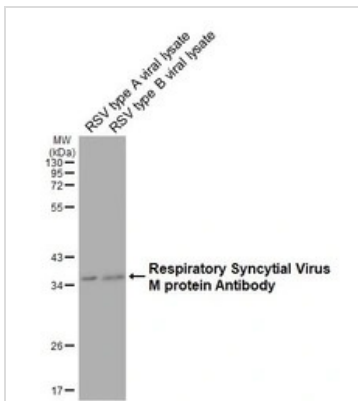
Sample: Mock and transfected 293T cells were fixed in ice-cold MeOH for 5 min.

Green: Respiratory Syncytial Virus M Antibody stained by Respiratory Syncytial Virus M protein Antibody [HL3000] (GTX640410) diluted at 1:500.

Blue: Fluoroshield with DAPI (GTX30920).


GTX640410 WB Image

Non-infected (–) and infected (+) HEP2 whole cell extracts were separated by 12% SDS-PAGE, and the membrane was blotted with Respiratory Syncytial Virus M protein Antibody [HL3000] (GTX640410) diluted at 1:1000. The HRP-conjugated anti-rabbit IgG antibody (GTX213110-01) was used to detect the primary antibody.


GTX640410 WB Image

RSV type A and type B viral lysate were separated by 12% SDS-PAGE, and the membrane was blotted with Respiratory Syncytial Virus M protein Antibody [HL3000] (GTX640410) diluted at 1:1000. The HRP-conjugated anti-rabbit IgG antibody (GTX213110-01) was used to detect the primary antibody.



For full product information, images and publications, please visit our [website](https://www.genetex.com).