



# SZABO SCANDIC

Part of Europa Biosite

## Produktinformation



Forschungsprodukte & Biochemikalien



Zellkultur & Verbrauchsmaterial



Diagnostik & molekulare Diagnostik



Laborgeräte & Service

Weitere Information auf den folgenden Seiten!  
See the following pages for more information!



### Lieferung & Zahlungsart

siehe unsere [Liefer- und Versandbedingungen](#)

### Zuschläge

- Mindermengenzuschlag
- Trockeneiszuschlag
- Gefahrgutzuschlag
- Expressversand

### SZABO-SCANDIC HandelsgmbH

Quellenstraße 110, A-1100 Wien

T. +43(0)1 489 3961-0

F. +43(0)1 489 3961-7

[mail@szabo-scandic.com](mailto:mail@szabo-scandic.com)

[www.szabo-scandic.com](http://www.szabo-scandic.com)

[linkedin.com/company/szaboscandic](https://www.linkedin.com/company/szaboscandic)



# LRRK2 antibody [HL3167]

**Cat. No. GTX640677**

<b>Host</b>	Rabbit
<b>Clonality</b>	Monoclonal
<b>Isotype</b>	IgG
<b>Applications</b>	WB, IHC-Fr
<b>Reactivity</b>	Human, Mouse

**Package**  
100 µl, 25 µl

## Applications

### Application Note

\*Optimal dilutions/concentrations should be determined by the researcher.

Suggested dilution	Recommended dilution
WB	1:500-1:3000
IHC-Fr	Assay dependent

Not tested in other applications.

**Observed MW (kDa)** 260-280 kDa.

## Properties

<b>Form</b>	Liquid
<b>Buffer</b>	PBS
<b>Preservative</b>	No preservatives
<b>Storage</b>	Store as concentrated solution. Centrifuge briefly prior to opening vial. For short-term storage (1-2 weeks), store at 4°C. For long-term storage, aliquot and store at -20°C or below. Avoid multiple freeze-thaw cycles.
<b>Concentration</b>	1 mg/ml (Please refer to the vial label for the specific concentration.)
<b>Immunogen</b>	The immunogen used to generate this antibody corresponds to human LRRK2.
<b>Purification</b>	Affinity purified by Protein A.
<b>Conjugation</b>	Unconjugated

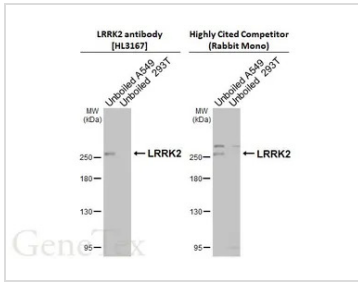
### Note

For laboratory research use only. Not for any clinical, therapeutic, or diagnostic use in humans or animals. Not for animal or human consumption.

Purchasers shall not, and agree not to enable third parties to, analyze, copy, reverse engineer or otherwise attempt to determine the structure or sequence of the product.

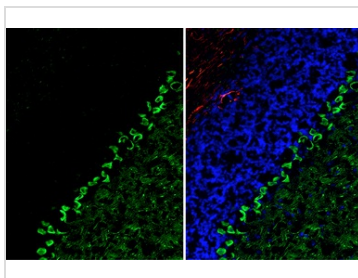


For full product information, images and publications, please visit our [website](#).

**DATA IMAGES**

**GTX640677 WB Image**

Unboiled various whole cell extracts (30 µg) were separated by 5% SDS-PAGE, and the membranes were blotted with LRRK2 antibody [HL3167] (GTX640677) diluted at 1:500 and competitor's antibody (Highly cited competitor) diluted at 1:250. The HRP-conjugated anti-rabbit IgG antibody (GTX213110-01) was used to detect the primary antibody.

\*The competitor is not affiliated with GeneTex and does not endorse this product.


**GTX640677 IHC-Fr Image**

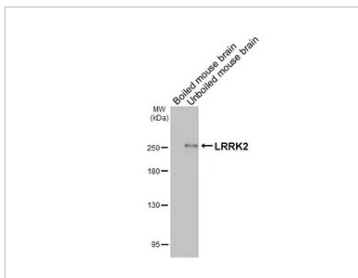
LRRK2 antibody [HL3167] detects LRRK2 protein by immunohistochemical analysis.

Sample: Frozen-sectioned mouse brain.

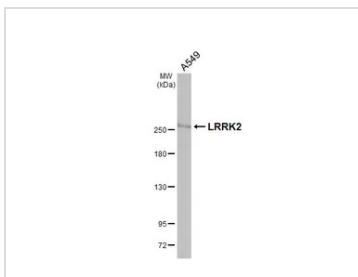
Green: LRRK2 stained by LRRK2 antibody [HL3167] (GTX640677) diluted at 1:250.

Red: GFAP antibody [GT25] (GTX641104) diluted at 1:250.

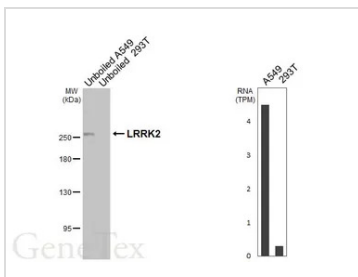
Blue: Fluoroshield with DAPI (GTX30920).


**GTX640677 WB Image**

Boiled and unboiled mouse tissue extracts (50 µg) were separated by 5% SDS-PAGE, and the membrane was blotted with LRRK2 antibody [HL3167] (GTX640677) diluted at 1:1000. The HRP-conjugated anti-rabbit IgG antibody (GTX213110-01) was used to detect the primary antibody, and the signal was developed with Trident ECL plus-Enhanced.


**GTX640677 WB Image**

Whole cell extract (30 µg) was separated by 5% SDS-PAGE, and the membrane was blotted with LRRK2 antibody [HL3167] (GTX640677) diluted at 1:1000. The HRP-conjugated anti-rabbit IgG antibody (GTX213110-01) was used to detect the primary antibody, and the signal was developed with Trident ECL plus-Enhanced.


**GTX640677 WB Image**

Unboiled various whole cell extracts (30 µg) were separated by 5% SDS-PAGE, and the membrane was blotted with LRRK2 antibody [GT53] (GTX640677) diluted at 1:500. The HRP-conjugated anti-rabbit IgG antibody (GTX213110-01) was used to detect the primary antibody. Corresponding RNA expression data for the same cell lines are based on Human Protein Atlas program.



For full product information, images and publications, please visit our [website](https://www.genetex.com).