



SZABO SCANDIC

Part of Europa Biosite

Produktinformation



Forschungsprodukte & Biochemikalien



Zellkultur & Verbrauchsmaterial



Diagnostik & molekulare Diagnostik



Laborgeräte & Service

Weitere Information auf den folgenden Seiten!
See the following pages for more information!



Lieferung & Zahlungsart

siehe unsere [Liefer- und Versandbedingungen](#)

Zuschläge

- Mindermengenzuschlag
- Trockeneiszuschlag
- Gefahrgutzuschlag
- Expressversand

SZABO-SCANDIC Handels GmbH

Quellenstraße 110, A-1100 Wien

T. +43(0)1 489 3961-0

F. +43(0)1 489 3961-7

mail@szabo-scandic.com

www.szabo-scandic.com

[linkedin.com/company/szaboscandic](https://www.linkedin.com/company/szaboscandic) 

E-Cadherin (phospho Ser838/Ser840) antibody [HL3201]

Cat. No. GTX640841

Host	Rabbit
Clonality	Monoclonal
Isotype	IgG
Applications	WB
Reactivity	Human, Mouse, Rat

Package
100 µl, 25 µl

Applications

Application Note

*Optimal dilutions/concentrations should be determined by the researcher.

Suggested dilution	Recommended dilution
WB	Assay dependent

Not tested in other applications.

Observed MW (kDa) 125 kDa.**Product Note** This antibody detects E-Cadherin when dually phosphorylated at Ser838 and Ser840, but it does not recognize E-Cadherin when singly phosphorylated at either Ser838 or Ser840.

Properties

Form	Liquid
Buffer	PBS
Preservative	No preservatives
Storage	Store as concentrated solution. Centrifuge briefly prior to opening vial. For short-term storage (1-2 weeks), store at 4°C. For long-term storage, aliquot and store at -20°C or below. Avoid multiple freeze-thaw cycles.
Concentration	1 mg/ml (Please refer to the vial label for the specific concentration.)
Immunogen	Carrier-protein conjugated synthetic peptide surrounding phospho Ser838/Ser840 of human E-Cadherin. The exact sequence is proprietary.
Purification	Affinity purified by Protein A.
Conjugation	Unconjugated

Note

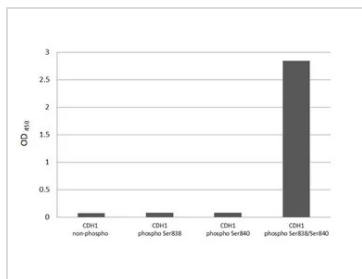
For laboratory research use only. Not for any clinical, therapeutic, or diagnostic use in humans or animals. Not for animal or human consumption.

Purchasers shall not, and agree not to enable third parties to, analyze, copy, reverse engineer or otherwise attempt to determine the structure or sequence of the product.



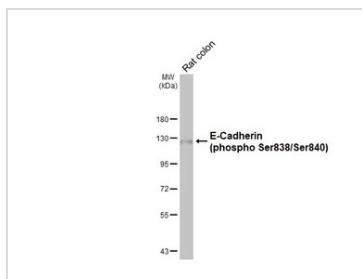
For full product information, images and publications, please visit our [website](#).

DATA IMAGES



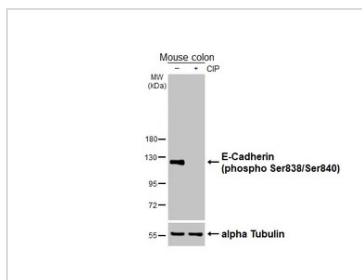
GTX640841 Image

Specificity test was performed by coating the plate with (CDH1 peptide, CDH1 (phospho Ser838) peptide, CDH1 (phospho Ser840) peptide, and CDH1 (phospho Ser838/Ser840) peptide) (1000- ng/mL). Coated peptides were probed with E-Cadherin (phospho Ser838/Ser840) antibody [HL3201] (GTX640841) (1 µg/mL). Goat anti-rabbit IgG antibody (HRP) (GTX213110-01) (1:10000) was used to detect the bound primary antibody.



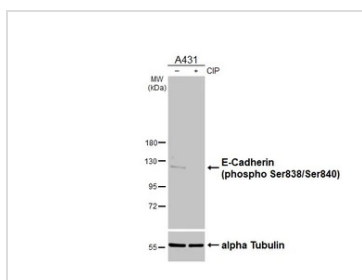
GTX640841 WB Image

Rat tissue extract (50 µg) was separated by 7.5% SDS-PAGE, and the membrane was blotted with E-Cadherin (phospho Ser838/Ser840) antibody [HL3201] (GTX640841) diluted at 1:1000. The HRP-conjugated anti-rabbit IgG antibody (GTX213110-01) was used to detect the primary antibody.



GTX640841 WB Image

Untreated (-) and treated (+) mouse tissue extract (50 µg) were separated by 7.5% SDS-PAGE, and the membrane was blotted with E-Cadherin (phospho Ser838/Ser840) antibody [HL3201] (GTX640841) diluted at 1:1000. The HRP-conjugated anti-rabbit IgG antibody (GTX213110-01) was used to detect the primary antibody.



GTX640841 WB Image

Untreated (-) and treated (+) A431 whole cell extracts (30 µg) were separated by 7.5% SDS-PAGE, and the membrane was blotted with E-Cadherin (phospho Ser838/Ser840) antibody [HL3201] (GTX640841) diluted at 1:1000. The HRP-conjugated anti-rabbit IgG antibody (GTX213110-01) was used to detect the primary antibody.



For full product information, images and publications, please visit our [website](https://www.genetex.com).