



SZABO SCANDIC

Part of Europa Biosite

Produktinformation



Forschungsprodukte & Biochemikalien



Zellkultur & Verbrauchsmaterial



Diagnostik & molekulare Diagnostik



Laborgeräte & Service

Weitere Information auf den folgenden Seiten!
See the following pages for more information!



Lieferung & Zahlungsart

siehe unsere [Liefer- und Versandbedingungen](#)

Zuschläge

- Mindermengenzuschlag
- Trockeneiszuschlag
- Gefahrgutzuschlag
- Expressversand

SZABO-SCANDIC HandelsgmbH

Quellenstraße 110, A-1100 Wien

T. +43(0)1 489 3961-0

F. +43(0)1 489 3961-7

mail@szabo-scandic.com

www.szabo-scandic.com

[linkedin.com/company/szaboscandic](https://www.linkedin.com/company/szaboscandic) 

EGFR (phospho Tyr1148) antibody [HL3278]

Cat. No. GTX640932

Host	Rabbit
Clonality	Monoclonal
Isotype	IgG
Applications	WB, ICC/IF
Reactivity	Human

Package
100 µl, 25 µl

Applications

Application Note

*Optimal dilutions/concentrations should be determined by the researcher.

Suggested dilution	Recommended dilution
WB	1:5000-1:20000
ICC/IF	Assay dependent

Not tested in other applications.

Observed MW (kDa) 175 kDa.

Product Note

The full-length EGFR includes the 24 aa signal peptide that is cleaved during EGFR maturation. The Tyr1148 of mature EGFR is equivalent to Tyr1172 of uncleaved EGFR.

Properties

Form	Liquid
Buffer	PBS
Preservative	No preservatives
Storage	Store as concentrated solution. Centrifuge briefly prior to opening vial. For short-term storage (1-2 weeks), store at 4°C. For long-term storage, aliquot and store at -20°C or below. Avoid multiple freeze-thaw cycles.
Concentration	1 mg/ml (Please refer to the vial label for the specific concentration.)
Immunogen	Carrier-protein conjugated synthetic peptide surrounding phospho Tyr1148 of human EGFR. The exact sequence is proprietary.
Purification	Affinity purified by Protein A.
Conjugation	Unconjugated



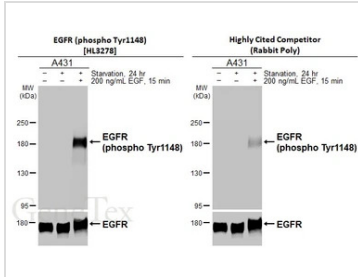
For full product information, images and publications, please visit our [website](#).

For laboratory research use only. Not for any clinical, therapeutic, or diagnostic use in humans or animals. Not for animal or human consumption.

Note

Purchasers shall not, and agree not to enable third parties to, analyze, copy, reverse engineer or otherwise attempt to determine the structure or sequence of the product.

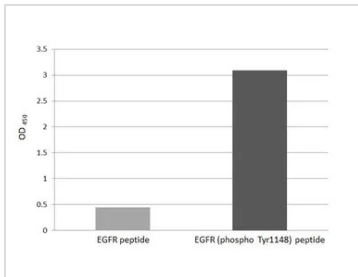
DATA IMAGES



GTx640932 WB Image

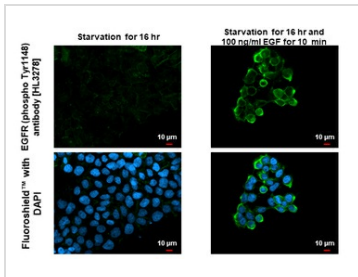
Untreated (–) and treated (+) A431 whole cell extract (30 µg) were separated by 5% SDS-PAGE, and the membranes were blotted with EGFR (phospho Tyr1148) antibody [HL3278] (GTx640932) diluted at 1:20000 and competitor's antibody (Highly Cited Competitor) diluted at 1:20000. The HRP-conjugated anti-rabbit IgG antibody (GTx213110-01) was used to detect the primary antibody.

*The competitor is not affiliated with GeneTex and does not endorse this product.



GTx640932 Image

Specificity test was performed by coating the plate with EGFR peptide and EGFR (phospho Tyr1148) peptide (15.63 ng/mL). Coated peptides were probed with EGFR (phospho Tyr1148) antibody [HL3278] (GTx640932) (1 µg/mL). Goat anti-rabbit IgG antibody (HRP) (GTx213110-01) (1:10000) was used to detect the bound primary antibody.



GTx640932 ICC/IF Image

EGFR (phospho Tyr1148) antibody [HL3278] detects EGFR (phospho Tyr1148) protein by immunofluorescent analysis.

Sample: Mock and treated A431 cells were fixed in 4% paraformaldehyde at RT for 15 min.

Green: EGFR (phospho Tyr1148) stained by EGFR (phospho Tyr1148) antibody [HL3278] (GTx640932) diluted at 1:500.

Blue: Fluoroshield with DAPI (GTx30920).



For full product information, images and publications, please visit our [website](https://www.genetex.com).