



# SZABO SCANDIC

Part of Europa Biosite

## Produktinformation



Forschungsprodukte & Biochemikalien



Zellkultur & Verbrauchsmaterial



Diagnostik & molekulare Diagnostik



Laborgeräte & Service

Weitere Information auf den folgenden Seiten!  
See the following pages for more information!



### Lieferung & Zahlungsart

siehe unsere [Liefer- und Versandbedingungen](#)

### Zuschläge

- Mindermengenzuschlag
- Trockeneiszuschlag
- Gefahrgutzuschlag
- Expressversand

### SZABO-SCANDIC HandelsgmbH

Quellenstraße 110, A-1100 Wien

T. +43(0)1 489 3961-0

F. +43(0)1 489 3961-7

[mail@szabo-scandic.com](mailto:mail@szabo-scandic.com)

[www.szabo-scandic.com](http://www.szabo-scandic.com)

[linkedin.com/company/szaboscandic](https://www.linkedin.com/company/szaboscandic) 

## EGFR (phospho Tyr1173) antibody [HL3280]

**Cat. No. GTX640934**

<b>Host</b>	Rabbit
<b>Clonality</b>	Monoclonal
<b>Isotype</b>	IgG
<b>Applications</b>	WB, ICC/IF
<b>Reactivity</b>	Human

**Package**  
100 µl, 25 µl

## Applications

**Application Note**

\*Optimal dilutions/concentrations should be determined by the researcher.

Suggested dilution	Recommended dilution
WB	1:5000-1:100000
ICC/IF	Assay dependent

Not tested in other applications.

**Observed MW (kDa)** 175 kDa.**Product Note**

The full-length EGFR includes the 24 aa signal peptide that is cleaved during EGFR maturation. The Tyr1173 of mature EGFR is equivalent to Tyr1197 of uncleaved EGFR.

## Properties

<b>Form</b>	Liquid
<b>Buffer</b>	PBS
<b>Preservative</b>	No preservatives
<b>Storage</b>	Store as concentrated solution. Centrifuge briefly prior to opening vial. For short-term storage (1-2 weeks), store at 4°C. For long-term storage, aliquot and store at -20°C or below. Avoid multiple freeze-thaw cycles.
<b>Concentration</b>	1 mg/ml (Please refer to the vial label for the specific concentration.)
<b>Immunogen</b>	Carrier-protein conjugated synthetic peptide surrounding phospho Tyr1173 of human EGFR. The exact sequence is proprietary.
<b>Purification</b>	Affinity purified by Protein A.
<b>Conjugation</b>	Unconjugated



For full product information, images and publications, please visit our [website](#).

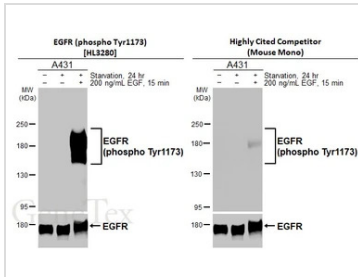
Date 2025 / 08 / 26 Page 1 of 2

For laboratory research use only. Not for any clinical, therapeutic, or diagnostic use in humans or animals. Not for animal or human consumption.

#### Note

Purchasers shall not, and agree not to enable third parties to, analyze, copy, reverse engineer or otherwise attempt to determine the structure or sequence of the product.

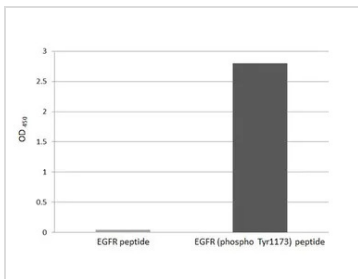
#### DATA IMAGES



#### GTX640934 WB Image

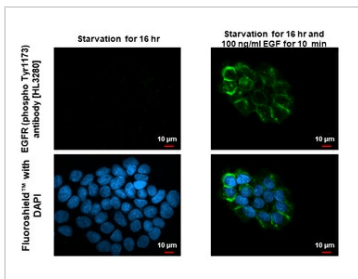
Untreated (–) and treated (+) A431 whole cell extract (30 µg) were separated by 5% SDS-PAGE, and the membranes were blotted with EGFR (phospho Tyr1173) antibody [HL3280] (GTX640934) diluted at 1:100000 and competitor's antibody (Highly Cited Competitor) diluted at 1:100000. The HRP-conjugated anti-rabbit IgG antibody (GTX213110-01) was used to detect the primary antibody.

\*The competitor is not affiliated with GeneTex and does not endorse this product.



#### GTX640934 Image

Specificity test was performed by coating the plate with EGFR peptide and EGFR (phospho Tyr1173) peptide (15.63 ng/mL). Coated peptides were probed with EGFR (phospho Tyr1173) antibody [HL3280] (GTX640934) (1 µg/mL). Goat anti-rabbit IgG antibody (HRP) (GTX213110-01) (1:10000) was used to detect the bound primary antibody.



#### GTX640934 ICC/IF Image

EGFR (phospho Tyr1173) antibody [HL3280] detects EGFR (phospho Tyr1173) protein by immunofluorescent analysis.

Sample: Mock and treated A431 cells were fixed in ice-cold MeOH for 5 min.

Green: EGFR (phospho Tyr1173) stained by EGFR (phospho Tyr1173) antibody [HL3280] (GTX640934) diluted at 1:500.

Blue: Fluoroshield with DAPI (GTX30920).



For full product information, images and publications, please visit our [website](https://www.genetex.com).