



SZABO SCANDIC

Part of Europa Biosite

Produktinformation



Forschungsprodukte & Biochemikalien



Zellkultur & Verbrauchsmaterial



Diagnostik & molekulare Diagnostik



Laborgeräte & Service

Weitere Information auf den folgenden Seiten!
See the following pages for more information!



Lieferung & Zahlungsart

siehe unsere [Liefer- und Versandbedingungen](#)

Zuschläge

- Mindermengenzuschlag
- Trockeneiszuschlag
- Gefahrgutzuschlag
- Expressversand

SZABO-SCANDIC HandelsgmbH

Quellenstraße 110, A-1100 Wien

T. +43(0)1 489 3961-0

F. +43(0)1 489 3961-7

mail@szabo-scandic.com

www.szabo-scandic.com

[linkedin.com/company/szaboscandic](https://www.linkedin.com/company/szaboscandic) 

PDGF Receptor beta (phospho Tyr751) antibody [HL3385]

Cat. No. GTX641205

Host	Rabbit
Clonality	Monoclonal
Isotype	IgG
Applications	WB, ICC/IF
Reactivity	Human, Mouse

Package
100 µl, 25 µl

Applications

Application Note

*Optimal dilutions/concentrations should be determined by the researcher.

Suggested dilution	Recommended dilution
WB	1:5000-1:160000
ICC/IF	Assay dependent

Not tested in other applications.

Observed MW (kDa) 190 kDa.

Properties

Form	Liquid
Buffer	PBS
Preservative	No preservatives
Storage	Store as concentrated solution. Centrifuge briefly prior to opening vial. For short-term storage (1-2 weeks), store at 4°C. For long-term storage, aliquot and store at -20°C or below. Avoid multiple freeze-thaw cycles.
Concentration	1 mg/ml
Immunogen	Carrier-protein conjugated synthetic peptide surrounding phospho Tyr751 of human PDGF Receptor beta. The exact sequence is proprietary.
Purification	Affinity purified by Protein A.
Conjugation	Unconjugated

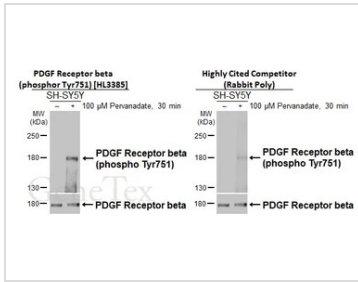
Note

For laboratory research use only. Not for any clinical, therapeutic, or diagnostic use in humans or animals. Not for animal or human consumption.

Purchasers shall not, and agree not to enable third parties to, analyze, copy, reverse engineer or otherwise attempt to determine the structure or sequence of the product.

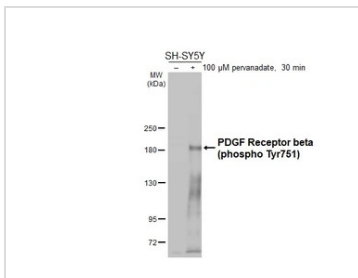


For full product information, images and publications, please visit our [website](#).

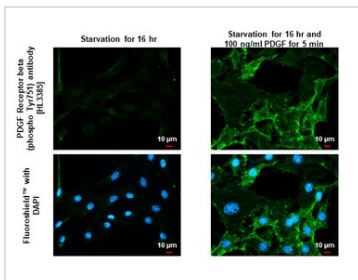
DATA IMAGES

GTX641205 WB Image

Untreated (–) and treated (+) SH-SY5Y whole cell extracts (30 µg) were separated by 5% SDS-PAGE, and the membranes were blotted with PDGF Receptor beta (phospho Tyr751) antibody [HL3385] (GTX641205) diluted at 1:1000 and highly cited competitor's antibody diluted at 1:1000. The HRP-conjugated anti-rabbit IgG antibody (GTX213110-01) was used to detect the primary antibody.

*The competitor is not affiliated with GeneTex and does not endorse this product.


GTX641205 WB Image

Untreated (–) and treated (+) SH-SY5Y whole cell extracts (5 µg) were separated by 5% SDS-PAGE, and the membrane was blotted with PDGF Receptor beta (phospho Tyr751) antibody [HL3385] (GTX641205) diluted at 1:160000. The HRP-conjugated anti-rabbit IgG antibody (GTX213110-01) was used to detect the primary antibody.


GTX641205 ICC/IF Image

PDGF Receptor beta (phospho Tyr751) antibody [HL3385] detects PDGF Receptor beta (phospho Tyr751) protein by immunofluorescent analysis.

Sample: Mock and treated NIH-3T3 cells were fixed in 4% paraformaldehyde at RT for 15 min.

Green: PDGF Receptor beta (phospho Tyr751) stained by PDGF Receptor beta (phospho Tyr751) antibody [HL3385] (GTX641205) diluted at 1:500.

Blue: Fluoroshield with DAPI (GTX30920).



For full product information, images and publications, please visit our [website](https://www.genetex.com).