



SZABO SCANDIC

Part of Europa Biosite

Produktinformation



Forschungsprodukte & Biochemikalien



Zellkultur & Verbrauchsmaterial



Diagnostik & molekulare Diagnostik



Laborgeräte & Service

Weitere Information auf den folgenden Seiten!
See the following pages for more information!



Lieferung & Zahlungsart

siehe unsere [Liefer- und Versandbedingungen](#)

Zuschläge

- Mindermengenzuschlag
- Trockeneiszuschlag
- Gefahrgutzuschlag
- Expressversand

SZABO-SCANDIC HandelsgmbH

Quellenstraße 110, A-1100 Wien

T. +43(0)1 489 3961-0

F. +43(0)1 489 3961-7

mail@szabo-scandic.com

www.szabo-scandic.com

[linkedin.com/company/szaboscandic](https://www.linkedin.com/company/szaboscandic) 

CaMKII alpha (phospho Thr286) antibody [HL3570]

Cat. No. GTX641517

Host	Rabbit
Clonality	Monoclonal
Isotype	IgG
Applications	WB, ICC/IF
Reactivity	Human, Mouse

Package
100 µl, 25 µl

Applications

Application Note

*Optimal dilutions/concentrations should be determined by the researcher.

Suggested dilution	Recommended dilution
WB	1:500-1:3000
ICC/IF	Assay dependent

Not tested in other applications.

Observed MW (kDa) 50 kDa.

Product Note It is specific for CaMKII alpha pThr286 and does not cross react with CaMKII alpha, CAMK2B, CAMK2B pThr287, CAMK2G, and CAMK2G pThr287.

Properties

Form	Liquid
Buffer	PBS
Preservative	No preservatives
Storage	Store as concentrated solution. Centrifuge briefly prior to opening vial. For short-term storage (1-2 weeks), store at 4°C. For long-term storage, aliquot and store at -20°C or below. Avoid multiple freeze-thaw cycles.
Concentration	1 mg/ml (Please refer to the vial label for the specific concentration.)
Immunogen	Carrier-protein conjugated synthetic peptide surrounding phospho Thr286 of human CaMKII alpha. The exact sequence is proprietary.
Purification	Affinity purified by Protein A.
Conjugation	Unconjugated



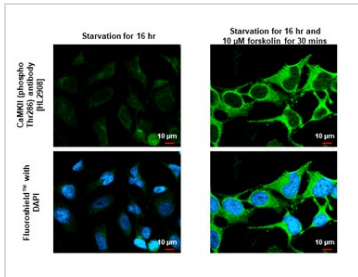
For full product information, images and publications, please visit our [website](#).

For laboratory research use only. Not for any clinical, therapeutic, or diagnostic use in humans or animals. Not for animal or human consumption.

Note

Purchasers shall not, and agree not to enable third parties to, analyze, copy, reverse engineer or otherwise attempt to determine the structure or sequence of the product.

DATA IMAGES



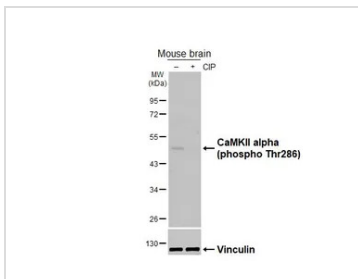
GTx641517 ICC/IF Image

CaMKII alpha (phospho Thr286) antibody [HL2908] detects CaMKII alpha (phospho Thr286) protein by immunofluorescent analysis.

Sample: Mock and treated HeLa cells were fixed in ice-cold MeOH for 5 min.

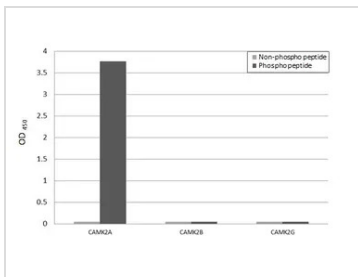
Green: CaMKII alpha (phospho Thr286) stained by CaMKII alpha (phospho Thr286) antibody [HL2908] (GTx641517) diluted at 1:500.

Blue: Fluoroshield with DAPI (GTx30920).



GTx641517 WB Image

Untreated (-) and treated (+) mouse brain extract (50 μg) were separated by 10% SDS-PAGE, and the membrane was blotted with CaMKII alpha (phospho Thr286) antibody [HL3570] (GTx641517) diluted at 1:1000. The HRP-conjugated anti-rabbit IgG antibody (GTx213110-01) was used to detect the primary antibody, and the signal was developed with Trident ECL plus-Enhanced.



GTx641517 Image

Specificity test was performed by coating the plate with CAMK2A peptide, CAMK2A (phospho Thr286) peptide, CAMK2B peptide, CAMK2B (phospho Thr287) peptide, CAMK2G peptide, and CAMK2G (phospho Thr287) peptide (125 ng/mL). Coated peptides were probed with CaMKII alpha (phospho Thr286) antibody [HL3570] (GTx641517) (1 μg/mL). Goat anti-rabbit IgG antibody (HRP) (GTx213110-01) (1:10000) was used to detect the bound primary antibody.



For full product information, images and publications, please visit our [website](https://www.genetex.com).