



# SZABO SCANDIC

Part of Europa Biosite

## Produktinformation



Forschungsprodukte & Biochemikalien



Zellkultur & Verbrauchsmaterial



Diagnostik & molekulare Diagnostik



Laborgeräte & Service

Weitere Information auf den folgenden Seiten!  
See the following pages for more information!



### Lieferung & Zahlungsart

siehe unsere [Liefer- und Versandbedingungen](#)

### Zuschläge

- Mindermengenzuschlag
- Trockeneiszuschlag
- Gefahrgutzuschlag
- Expressversand

### SZABO-SCANDIC Handels GmbH

Quellenstraße 110, A-1100 Wien

T. +43(0)1 489 3961-0

F. +43(0)1 489 3961-7

[mail@szabo-scandic.com](mailto:mail@szabo-scandic.com)

[www.szabo-scandic.com](http://www.szabo-scandic.com)

[linkedin.com/company/szaboscandic](https://www.linkedin.com/company/szaboscandic) 

## Integrin alpha V antibody [HL3598]

**Cat. No. GTX641573**

|                     |            |
|---------------------|------------|
| <b>Host</b>         | Rabbit     |
| <b>Clonality</b>    | Monoclonal |
| <b>Isotype</b>      | IgG        |
| <b>Applications</b> | WB, IHC-P  |
| <b>Reactivity</b>   | Human, Rat |

**Package**

100 µl, 25 µl

## Applications

**Application Note**

\*Optimal dilutions/concentrations should be determined by the researcher.

| Suggested dilution | Recommended dilution |
|--------------------|----------------------|
| WB                 | 1:500-1:3000         |
| IHC-P              | Assay dependent      |

Not tested in other applications.

|                          |  |
|--------------------------|--|
| <b>Observed MW (kDa)</b> | 130-140 kDa.   |
| <b>Product Note</b>      | This antibody may not be suitable for rat IHC-P assay, as its rat reactivity is based on WB testing. |

## Properties

|                      |  |
|----------------------|--|
| <b>Form</b>          | Liquid   |
| <b>Buffer</b>        | PBS  |
| <b>Preservative</b>  | No preservatives   |
| <b>Storage</b>       | Store as concentrated solution. Centrifuge briefly prior to opening vial. For short-term storage (1-2 weeks), store at 4°C. For long-term storage, aliquot and store at -20°C or below. Avoid multiple freeze-thaw cycles. |
| <b>Concentration</b> | 1 mg/ml  |
| <b>Immunogen</b>     | Recombinant protein encompassing a sequence within the Extracellular domain of human Integrin alpha V. The exact sequence is proprietary.  |
| <b>Purification</b>  | Affinity purified by Protein A.  |
| <b>Conjugation</b>   | Unconjugated   |

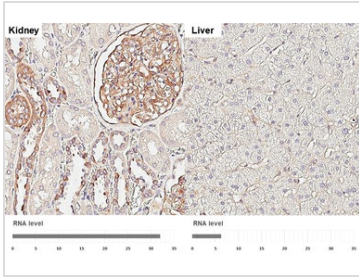
**Note**

For laboratory research use only. Not for any clinical, therapeutic, or diagnostic use in humans or animals. Not for animal or human consumption.

Purchasers shall not, and agree not to enable third parties to, analyze, copy, reverse engineer or otherwise attempt to determine the structure or sequence of the product.



For full product information, images and publications, please visit our [website](#).

**DATA IMAGES**

**GTX641573 IHC-P Image**

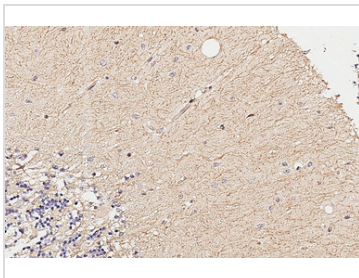
Integrin alpha V antibody [HL3598] detects Integrin alpha V protein by immunohistochemical analysis.

Sample: Paraffin-embedded human tissues.

Integrin alpha V stained by Integrin alpha V antibody [HL3598] (GTX641573) diluted at 1:75.

Antigen Retrieval: Citrate buffer, pH 6.0, 15 min

Corresponding RNA levels (RPKM) in the tissues are based on NCBI database.

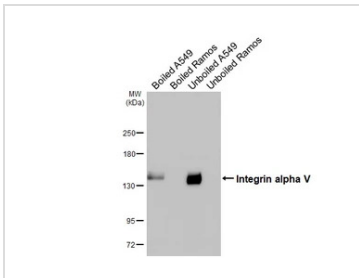

**GTX641573 IHC-P Image**

Integrin alpha V antibody [HL3598] detects Integrin alpha V protein by immunohistochemical analysis.

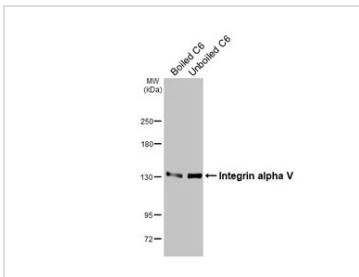
Sample: Paraffin-embedded human brain.

Integrin alpha V stained by Integrin alpha V antibody [HL3598] (GTX641573) diluted at 1:200.

Antigen Retrieval: Citrate buffer, pH 6.0, 15 min


**GTX641573 WB Image**

Boiled and unboiled various whole cell extracts (30 µg) were separated by 5% SDS-PAGE, and the membrane was blotted with Integrin alpha V antibody [HL3598] (GTX641573) diluted at 1:1000. The HRP-conjugated anti-rabbit IgG antibody (GTX213110-01) was used to detect the primary antibody.


**GTX641573 WB Image**

Boiled and unboiled C6 whole cell extracts (30 µg) were separated by 5% SDS-PAGE, and the membrane was blotted with Integrin alpha V antibody [HL3598] (GTX641573) diluted at 1:1000. The HRP-conjugated anti-rabbit IgG antibody (GTX213110-01) was used to detect the primary antibody.



For full product information, images and publications, please visit our [website](https://www.genetex.com).