



SZABO SCANDIC

Part of Europa Biosite

Produktinformation



Forschungsprodukte & Biochemikalien



Zellkultur & Verbrauchsmaterial



Diagnostik & molekulare Diagnostik



Laborgeräte & Service

Weitere Information auf den folgenden Seiten!
See the following pages for more information!



Lieferung & Zahlungsart

siehe unsere [Liefer- und Versandbedingungen](#)

Zuschläge

- Mindermengenzuschlag
- Trockeneiszuschlag
- Gefahrgutzuschlag
- Expressversand

SZABO-SCANDIC HandelsgmbH

Quellenstraße 110, A-1100 Wien

T. +43(0)1 489 3961-0

F. +43(0)1 489 3961-7

mail@szabo-scandic.com

www.szabo-scandic.com

[linkedin.com/company/szaboscandic](https://www.linkedin.com/company/szaboscandic) 

PKC alpha (phospho Thr497) antibody [HL3605]

Cat. No. GTX641580

Host	Rabbit
Clonality	Monoclonal
Isotype	IgG
Applications	WB
Reactivity	Human, Mouse

Package
100 µl, 25 µl

Applications

Application Note

*Optimal dilutions/concentrations should be determined by the researcher.

Suggested dilution	Recommended dilution
--------------------	----------------------

WB	1:500-1:3000
----	--------------

Not tested in other applications.

Observed MW (kDa)	77 kDa.
--------------------------	---------

Product Note

This antibody is raised against human PKC alpha phosphorylated at Thr497. Based on sequence homology, it may cross react with human PKC alpha, beta1, beta2, epsilon, and eta.

Properties

Form	Liquid
-------------	--------

Buffer	PBS
---------------	-----

Preservative	No preservatives
---------------------	------------------

Storage	Store as concentrated solution. Centrifuge briefly prior to opening vial. For short-term storage (1-2 weeks), store at 4°C. For long-term storage, aliquot and store at -20°C or below. Avoid multiple freeze-thaw cycles.
----------------	--

Concentration	1 mg/ml (Please refer to the vial label for the specific concentration.)
----------------------	--

Immunogen	Carrier-protein conjugated synthetic peptide surrounding phospho Thr497 of human PKC alpha. The exact sequence is proprietary.
------------------	--

Purification	Affinity purified by Protein A.
---------------------	---------------------------------

Conjugation	Unconjugated
--------------------	--------------

Note

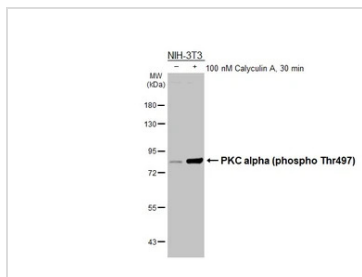
For laboratory research use only. Not for any clinical, therapeutic, or diagnostic use in humans or animals. Not for animal or human consumption.

Purchasers shall not, and agree not to enable third parties to, analyze, copy, reverse engineer or otherwise attempt to determine the structure or sequence of the product.



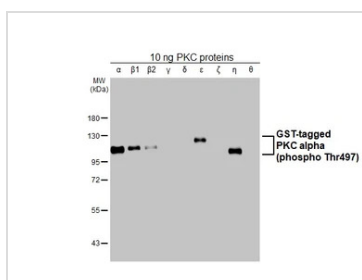
For full product information, images and publications, please visit our [website](#).

DATA IMAGES



GTX641580 WB Image

Untreated (-) and treated (+) NIH-3T3 whole cell extracts (30 µg) were separated by 7.5% SDS-PAGE, and the membrane was blotted with PKC alpha (phospho Thr497) antibody [HL3605] (GTX641580) diluted at 1:1000. The HRP-conjugated anti-rabbit IgG antibody (GTX213110-01) was used to detect the primary antibody.



GTX641580 WB Image

PKC proteins (0.01 µg) were separated by 7.5% SDS-PAGE, and the membrane was blotted with PKC alpha (phospho Thr497) antibody [HL3605] (GTX641580) diluted at 1:1000. The HRP-conjugated anti-rabbit IgG antibody (GTX213110-01) was used to detect the primary antibody, and the signal was developed with Trident ECL plus-Enhanced.



For full product information, images and publications, please visit our [website](#).