



# SZABO SCANDIC

Part of Europa Biosite

## Produktinformation



Forschungsprodukte & Biochemikalien



Zellkultur & Verbrauchsmaterial



Diagnostik & molekulare Diagnostik



Laborgeräte & Service

Weitere Information auf den folgenden Seiten!  
See the following pages for more information!



### Lieferung & Zahlungsart

siehe unsere [Liefer- und Versandbedingungen](#)

### Zuschläge

- Mindermengenzuschlag
- Trockeneiszuschlag
- Gefahrgutzuschlag
- Expressversand

### SZABO-SCANDIC Handels GmbH

Quellenstraße 110, A-1100 Wien

T. +43(0)1 489 3961-0

F. +43(0)1 489 3961-7

[mail@szabo-scandic.com](mailto:mail@szabo-scandic.com)

[www.szabo-scandic.com](http://www.szabo-scandic.com)

[linkedin.com/company/szaboscandic](https://www.linkedin.com/company/szaboscandic)



# Rad51 antibody [HL3628]

**Cat. No. GTX641619**

<b>Host</b>	Rabbit
<b>Clonality</b>	Monoclonal
<b>Isotype</b>	IgG
<b>Applications</b>	WB, IHC-P
<b>Reactivity</b>	Human, Mouse, Rat, Dog

**Package**  
100 µl, 25 µl

## Applications

### Application Note

\*Optimal dilutions/concentrations should be determined by the researcher.

Suggested dilution	Recommended dilution
WB	1:500-1:3000
IHC-P	Assay dependent

Not tested in other applications.

**Observed MW (kDa)** 37 kDa.

## Properties

<b>Form</b>	Liquid
<b>Buffer</b>	PBS
<b>Preservative</b>	No preservatives
<b>Storage</b>	Store as concentrated solution. Centrifuge briefly prior to opening vial. For short-term storage (1-2 weeks), store at 4°C. For long-term storage, aliquot and store at -20°C or below. Avoid multiple freeze-thaw cycles.
<b>Concentration</b>	1 mg/ml
<b>Immunogen</b>	Recombinant fragment of human Rad51.
<b>Purification</b>	Affinity purified by Protein A.
<b>Conjugation</b>	Unconjugated

### Note

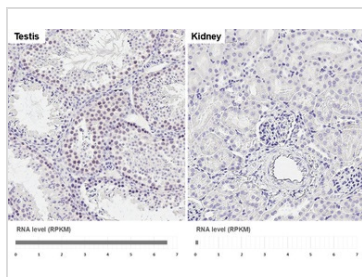
For laboratory research use only. Not for any clinical, therapeutic, or diagnostic use in humans or animals. Not for animal or human consumption.

Purchasers shall not, and agree not to enable third parties to, analyze, copy, reverse engineer or otherwise attempt to determine the structure or sequence of the product.



For full product information, images and publications, please visit our [website](#).

DATA IMAGES



**GTX641619 IHC-P Image**

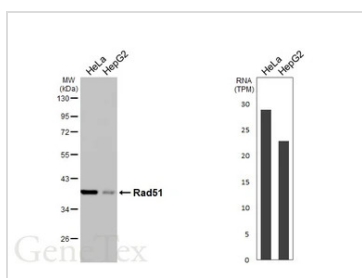
Rad51 antibody [HL3628] detects Rad51 protein by immunohistochemical analysis.

Sample: Paraffin-embedded mouse tissues.

Rad51 stained by Rad51 antibody [HL3628] (GTX641619) diluted at 1:200.

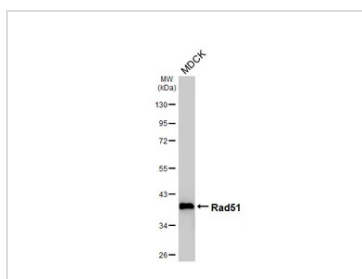
Antigen Retrieval: Citrate buffer, pH 6.0, 15 min

Corresponding RNA levels (RPKM) in the tissues are based on NCBI database.



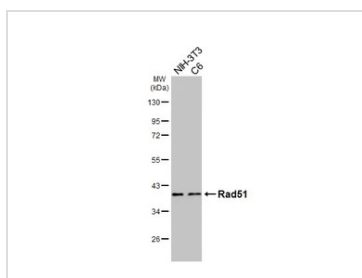
**GTX641619 WB Image**

Various whole cell extracts (30 µg) were separated by 10% SDS-PAGE, and the membrane was blotted with Rad51 antibody [HL3628] (GTX641619) diluted at 1:1000. The HRP-conjugated anti-rabbit IgG antibody (GTX213110-01) was used to detect the primary antibody. Corresponding RNA expression data for the same cell lines are based on Human Protein Atlas program.



**GTX641619 WB Image**

Whole cell extract (30 µg) was separated by 10% SDS-PAGE, and the membrane was blotted with Rad51 antibody [HL3628] (GTX641619) diluted at 1:1000. The HRP-conjugated anti-rabbit IgG antibody (GTX213110-01) was used to detect the primary antibody.



**GTX641619 WB Image**

Various whole cell extracts (30 µg) were separated by 10% SDS-PAGE, and the membrane was blotted with Rad51 antibody [HL3628] (GTX641619) diluted at 1:1000. The HRP-conjugated anti-rabbit IgG antibody (GTX213110-01) was used to detect the primary antibody.



For full product information, images and publications, please visit our [website](https://www.genetex.com).